

Historic, archived document

Do not assume content reflects current scientific knowledge, policies, or practices.

62,73

RECORDED
★ FEB 26 1936
U.S. Department of Agriculture

Barr's

NURSERY CATALOG

How, When, Where and What to Plant

It's not a Home until it's Planted!



1936

"Outdoor Living Room"

B. F. Barr Nurseries

Established 1892

LANCASTER, PA.

In the Garden Spot of America where Plants attain Perfection

Get Plants Where Grown

Fresh Dug—Greater Vitality

By obtaining your plants from a nursery where they were grown and having them fresh-dug by hand you are sure to secure the very best results possible. This is the only kind of plants you receive from the B. F. Barr Nurseries, located in the Garden Spot of America, where plants attain perfection.

Measure Values By Results

Plants sold at roadside stands and department stores generally have been dug days and weeks before and allowed to stand around drying out. All plants purchased of Barr's will be freshly dug and are sure to reach you in a vigorous condition, insuring successful planting.

Just as grounds that appear untidy and unkempt reflect adversely on the occupants, so do inferior plants make a poor showing on the effort expended in beautifying. Better a few good, healthy and attractive plants on a property than many poor ones.



B. F. BARR

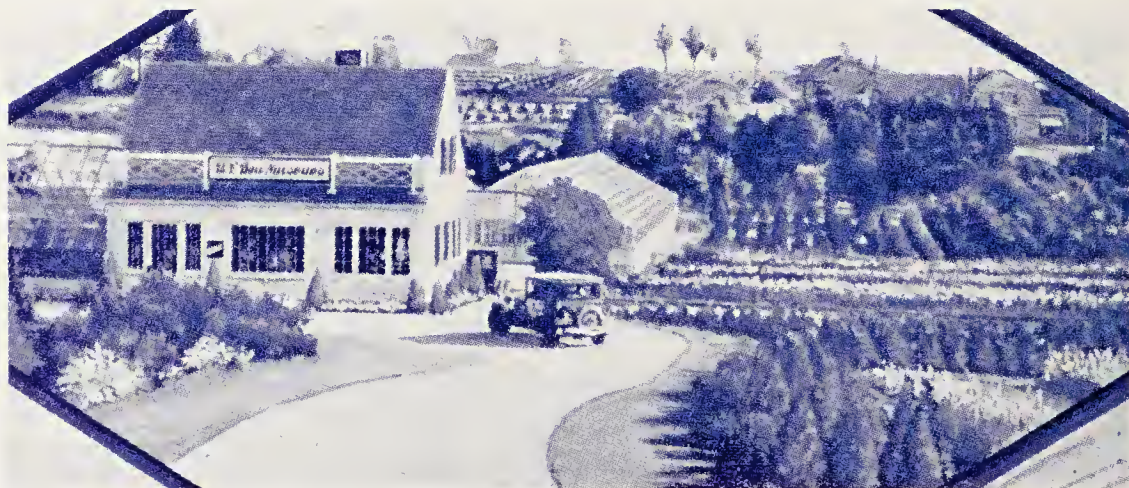
Founder and General Manager

There is no better time than NOW to replace plants that spoil their surroundings, using young, vigorous stock of newer and better varieties more suitable and yet still surprisingly low priced. Suggestions and estimates will be cheerfully given on contemplated renovations.

Prices Still Low—Quality Maintained

The B. F. Barr Nurseries in this catalog presents to its friends and patrons an unusual opportunity to obtain from "The Largest Nursery in the Leading Agricultural County of America" plants of superior quality at remarkably low prices.

You are invited to visit our Nurseries and Greenhouses any time at your convenience. Especially do we urge you to see our Tulip Garden, second Sunday in May, when 50 varieties of late Tulips will be in bloom, and again the second Sunday in June to see the Peony display.



GARDEN SHOP AND OFFICE OF B. F. BARR NURSERIES

In addition to a large range of greenhouses, two tracts of land, totaling about 100 acres of America's most fertile soil, comprise the facilities which make it possible for us to give purchasers of plants an unexcelled service.

The nursery show grounds, greenhouses, and office are directly on the Lincoln Highway (U. S. Route 30), on the western outskirts of Lancaster, Pa.

It is from this point that all sales are made.

See Complete Index on Pages 50 and 51

Barr's Special Lawn Seed Mixtures



As the lawn furnishes the setting for the house, from the humblest cottage to the largest mansion, its importance is universally recognized. A nice velvety lawn, neat and well kept, is the envy of all. In fact it is the sign of a family that is thrifty and home loving.

Barr's Special "Sunnyside" Lawn Seed

This is a combination of the most desirable grasses; fine leaved, good color, lasting qualities. As the chief ingredient of a good lawn is Kentucky Blue Grass there is a large proportion of this ideal grass in this mixture. No Timothy nor Rye nor coarse-bladed grasses are used to cheapen this mixture. It will germinate quickly and provide a permanent lawn as there is no annual seed—that which lives only one year. Besides the Kentucky Blue Grass the other varieties included are fine-leaved perennial grasses that add value and merit.

The use of Barr's Special "Sunnyside" Lawn Seed will be a real saving as considerable work and expense are incurred in lawn making and all may be wasted if a cheap, poor seed is used. With grass seed especially it pays to get the best obtainable.

We pay parcel post or express charges on orders of grass seed up to and including 1 bushel. Larger amounts F. O. B., Lancaster, Pa.

1 qt.	\$0.45
½ pk.	1.50
1 pk.	2.75
½ bu. (10 lb.)	4.50
1 bu. (20 lb.)	8.75
100 lb.	35.00

Barr's "Green Mantle" Lawn Grass Seed

This is a splendid mixture of good grasses for average conditions of soil and sunshine. It has a goodly proportion of Kentucky Blue Grass and some White Clover. Will quickly give the lawn an enduring velvety, deep green mantle, with freedom from weeds, as it is very free from weed seeds.

One quart of grass seed will sow 100 sq. ft. of lawn; after seeding keep the ground continually moist for at least three weeks. Avoid light sprinklings when watering.

1 qt.	\$0.25
½ pk.	.95
1 pk.	1.75
½ bu. (10 lb.)	3.35
1 bu. (20 lb.)	6.00
100 lb.	25.00

Barr's "Shady Side" Lawn Grass Seed

Composed of shade loving, permanent varieties of fine-leaved grasses—no Timothy nor Ryegrass. Includes some of the scarcer and more expensive varieties of grasses, including *Poa trivialis*, which have proven best adapted for situations of a difficult nature due to shade.

It is important to feed lawns under trees heavily three times a year—Spring, early Summer and Fall, so both the grass and trees will have plenty to feed on and thrive. Failure under trees is due more to competition of tree roots rather than shade, and plenty of feed will give both grass and trees a chance to exist.

1 qt.	\$0.55
½ pk.	1.75
1 pk.	3.00
½ bu. (10 lb.)	5.50
1 bu. (20 lb.)	10.00
100 lb.	42.50

Net weight of one quart of above improved mixtures is several ounces heavier than the ordinary, cheap, chaffy brands.

New Plants Now in the Spotlight



Truehedge Columnberry

(Patented)

Hardy plant of columnar habit, with very dense growth. Has the beautiful autumn coloring and bright red berries of Japanese Barberry with the rich beauty and erect full growth of Boxwood.

	Each	Per 10	Per 100
15-18 in.	\$0.50	\$1.00	\$35.00
18-24 in.60	5.00	45.00

5 or more at 10 rate; 25 or more at 100 rate.

25 or more plants shipped by express; smaller quantities by parcel post if 5% additional accompanies order,—15c. minimum charge.

Pink Cushion

New Azalea-Flowered Chrysanthemum

This beautiful new plant is creating sensational interest. Single plants have had 1500 flowers open at one time.

Like the Azalea it is dwarf and spreading in growth, becoming a broad, rounded mound completely covered with rosy pink flowers. The first flowers are produced in August and the plant continues to be a mass of blazing glory until late frost. When fully opened the flowers are 2 inches across. Very hardy.

Strong plants 35c. each; 3 for \$1.00. Postpaid.

New Honeysuckle Golden Giant

This outstanding, showy new climber (*Lonicera tellmanniana*) blooms profusely during June, bearing long, tubular flowers of an intense rich golden yellow with bronzy red shading on the tube. Perfectly hardy and strong growing.

Strong Plants, 50c. each; \$5.00 per doz.

New Giant

Hybrid Hemerocallis

A great improvement on the older types offering a flowering season much longer.

The Gem. Deep yellow, excellently formed. Blooms mid-June to early July. 80c. each.

J. A. Crawford. Apricot and cadmium yellow. Fine flowers of splendid size. Blooms early June. \$1.00 each.

African Star Pink

A Perfect Ball, Covered With Hundreds of Glowing Pink Blossoms

A rare plant (*Chironia linoides*) about 12 to 15 inches high becoming a wonderful sight in July and August when covered with glowing pink flowers numbered in the hundreds. Neat ball shape; suitable for rock gardens, or as specimens in the mixed border.

Strong plants, 35c. each; \$3.50 per doz.

New Hardy Phlox

Columbia. (Patented). Exquisite cameo-pink with faint blue eye, lasting color. Gives weeks longer bloom than other phlox, the blooms continuing on laterals growing out of the leaf-joints. Grows 2½ ft. high, leaves dark green, free from mildew and black spot.

Daily Sketch. An outstanding novelty bearing large trusses of enormous individual flowers; beautiful light salmon pink enhanced by a faint carmine eye.

Either of the above—50c. each; 3 for \$1.25; \$1.50 per doz.



Ile de France—NEW BUDDLEIA

Greater Brilliance of Color

Bears great quantities of showy flower trusses, 6 to 9 inches long, thickly set with sweetly fragrant, small flowers, colored a charming rosy violet-purple. Begins blooming in July, continuing until heavy frost. Splendid, well-rounded bush 3 to 4 ft. high.

Potted plants 50c. each; 3 for \$1.25. Postpaid.

NEW ROSE CREATIONS

Best of the More Recent Specialties

CARRIE JACOBS BOND

Most Outstanding Rose of Decade

This magnificent new patented rose is an enchanting rich deep rose shade enhanced by a luminous coral sheen. Large double blooms carried singly on long, upright stems.

\$1.50 each; \$15.00 per dozen.

NIGRETTE

(Patented)

Intense deep maroon with blackish velvet sheen; darkest of roses, appearing almost black from a little distance. The sensation of the European Rose World. Continuously in bloom and deliciously fragrant.

\$2.00 each; \$20.00 per dozen.

CRIMSON GLORY

(Patented)

Large, urn-shaped buds opening into well formed flowers of intense deep vivid crimson, shaded oxblood red; soft velvety nap.

\$1.25 each; \$12.50 per dozen.

FEU PERNET-DUCHER

(Patented)

Creamy orange buds heavily marked with carmine. The shapely blooms are a pure deep yellow with lighter edges flushed with pink. Free flowering and fragrant.

\$1.50 each; \$15.00 per dozen.

TOKEN

(Patented)

Sun-ripened apricot shade—a unique color; double flowers, long lasting and pleasing at all stages; glossy, disease-resistant foliage.

\$1.50 each; \$15.00 per doz.

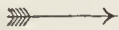


COUNTESS VANDAL

(Patented)

Lovely coppery pink and gold, extra long pointed buds. Most popular variety at the Century of Progress.

\$1.00 each; \$10.00 per doz.



AMELIA EARHART

(Patented)

Deep yellow center graduating to cream outer collarette with blush overtone; extremely fragrant; free blooming, vigorous plant with leathery, dark green foliage.

\$1.50 each;
\$15.00 per doz.



New Creations in Climbing Roses

PRINCESS VAN ORANGE

(Patented)

Flaming orange-scarlet; branches literally covered with masses of polyantha-like trusses. Most talked of European climbing novelty in many years.

\$1.25 each; 3 for \$3.50.

GOLDEN CLIMBER

(Patented)

Golden-yellow Hybrid Tea type flowers on long stems; buds are a pure golden yellow with heavy markings of orange scarlet; handsome, glossy green foliage, extreme vigor and rapid growth. Recurrent blooms throughout the season.

\$1.50 each; 3 for \$4.00.

Also See Other Roses Listed on Pages 32, 33, 34 and 52

Save by Buying Plants From Barr's by Mail

Customers ordering by mail or allowing selection by us are assured their wants will be taken care of just as satisfactorily as if they had spent considerable of their own and our time necessitated in making their selections from the hundreds of thousands of plants in our nurseries. We take pride in pleasing and you always get full money's worth.

Each order is individually treated. This insures freshly dug plants. We do not carry any plants in storage. Mail orders, therefore, receive the same careful attention that would be given a personally selected purchase.

How to Remit When Ordering

Cash should accompany order. Remit by post office or express money order, registered letter or bank draft. Postage stamps accepted up to \$2.00 in small denominations only.

The right is reserved to advance prices without further notice, depending on market conditions. All prices, unless otherwise stated, are F. O. B. Nurseries.

When unusual plants are personally selected in the nursery the price will be in accordance with the value of the specimen selected, rather than catalog list price.

Ideal Shipping Facilities

Our shipping facilities are ideal, the Lincoln Highway, the Pennsylvania Railroad and the Reading Railroad, putting the nurseries in quick and easy communication with all points.

We make no charge for packing retail orders for Evergreens up to 4 ft. or trees up to 2 in. in caliper. For all sizes larger add 25c per foot for

Government Certified Plants Furnished

Barr's "Will Grow" Plants are shipped anywhere under certificates from the U. S. Government and Penna. Dept. of Agriculture, showing them to have been thoroughly inspected and found free from insect pests and fungus diseases.

You are thus assured of receiving perfectly healthy, vigorous plants.

Evergreens, and 20% to catalog prices for Trees. This is to cover cost of materials and crates.

Free deliveries by truck within a radius of 50 miles can be arranged for when a full truck load of stock (approximately \$200 worth) is purchased by one or more customers in a community. Beyond the free delivery zone mentioned, truck deliveries may be arranged for at a nominal cost.

Parcel Post Charges

Trees, Evergreens and Shrubs (except where especially designated prepaid) are too large to mail. On other orders that can be mailed please add:

5% of the amount to cover postage (except postpaid offers), to points in Pennsylvania, New York, Connecticut, Rhode Island, New Jersey, Delaware, Maryland, Virginia and West Virginia.

10% elsewhere east of the Mississippi River.

20% to Gulf States and beyond the Mississippi.

Minimum charge where required to cover cost of mailing, 15c.

All Plants Genuine and True to Name

We exercise the greatest care to have all stock genuine and true to label, holding ourselves ready to refund the purchase price or to replace any plant that proves untrue. We do not give any warranty, express or implied; and in case of error on our part, it is mutually agreed between the purchaser and ourselves that we shall not be held responsible at any time for a greater amount than the original price of the goods.

"Will Grow" Plants Fully Guaranteed

The B. F. Barr Nurseries Guarantee:—

All plants to be freshly dug for each order and to reach you in good, healthy, vigorous condition.

Money Back If Not Satisfied on receipt of plants. We will refill your order free on plants that do not start growth at first growing period (except large trees of 4 in. cal. or more not dug B. & B.) on presentation of cash sales slip or receipted invoice. After plants have started growth,—indicating a healthy, satisfactory condition,—our responsibility ceases.

B. F. BARR NURSERIES

Plant Evergreen Trees and Shrubs For Year 'Round Beauty

For all-year-round beauty, usefulness and lasting qualities Evergreens have become the greatest factor in beautifying home grounds and larger landscapes.

There is a choice of Evergreens on the following pages for every purpose: For foundation planting, for single or massed plantings on the open lawn, for lining walks, or for hedges.

Evergreens One Of Our Specialties

Superbly rooted, beautifully shaped, wonderfully bushy and dense, healthfully colored, Barr's "Will Grow" Evergreens will give real beauty to your property. These qualities are attained by our special process of production to improve the appearance and increase the vigor and longevity of these hardy ornamental plants. Barr's "Will Grow" Evergreens are what might be termed "trained." Weak ones have been weeded out by repeated transplantings and the remaining ones are stronger, prettier, better rooted. Such ones may cost more but the results are so much better, both in vigor of growth and in beauty.

Plant Some Evergreens Now

Make a check-up of your grounds and notice where the aristocratic beauty of evergreens will add distinction and character. Evergreens blend delightfully with the garden's gay colors in summer, and in the winter, when the wind-swept garden usually looks quite desolate, their foliage masses give a feeling of warmth and coziness. Plant evergreens now and create a garden that will be attractive in winter as well as in summer.

Landscape Plans and Estimates

We will gladly help you in your Home Grounds beautifying by furnishing plans and estimates covering the improvement contemplated. Write us for any further information desired. Your inquiries for advice and assistance are solicited.



Balled and Burlapped Evergreens

Abies—THE FIRS

Stately, handsome Evergreens of compact, pyramidal form and symmetrical outline; whorled, spreading branches; leaves flattened, usually grooved and lustrous. Show to best advantage as specimens.

A. concolor—WHITE FIR. Beautiful evergreen with large foliage of soft, silvery hue. Very hardy.

1½-2 ft.	\$1.00
2 -2½ ft.	2.00
2½-3 ft.	3.00
3 -3½ ft.	3.50
3½-4 ft.	4.00

A. nordmanniana—NORDMANN FIR. Densely branched, symmetrical, pyramidal evergreen of very striking appearance. Dark green, glossy, flat needles, blunt at tip, silvery white on underside. Rarest and most distinguished of all the Firs.

3-4 ft.	\$7.00
4-5 ft.	10.00
5-6 ft.	15.00
6-8 ft.	30.00
8-10 ft.	40.00

Evergreens are for the small home grounds as well as the large estate

Retinosporas—Graceful, Soft-Foliaged Evergreens of Remarkable Beauty, Yet Inexpensive

Well worth any special effort to possess are Retinosporas. Their graceful habit of growth and soft, fine foliage make them favorites among Evergreens. Specimens attain unusual beauty and become sources of life-long pride and pleasure. They cannot be too highly recommended for foundation and lawn planting. Prefer a moist soil.



The Plume Retinospora with its distinct pyramidal outline, and beautiful, soft foliage, which is characteristic of all Retinosporas, is very ornamental.

Chamaecyparis—RETINOSPORAS

C. obtusa—HINOKI CYPRESS. Strong, pyramidal tree with horizontal, fern-like branches, drooping habit. Foliage light green and shiny, somewhat whitened beneath.

3-4 ft.	\$3.00	5-6 ft.	\$5.00
4-5 ft.	3.50	6-7 ft.	6.00

C. obtusa gracilis—SLENDER HINOKI CYPRESS. Pyramidal, with slender, drooping branches; very picturesque. Rich, dark green foliage. Slow growing and a very desirable tree.

1½-2 ft.	\$2.00
2 -3 ft.	3.00
3 -4 ft.	4.00

C. pisifera—SAWARA RETINOSPORA. Tall and pyramidal with slender and gracefully drooping branches; broad, flat, deep glossy green foliage. Bushy, rapid grower.

2½-3 ft.	\$1.50	5-6 ft.	\$4.00
3 -4 ft.	2.50	6-7 ft.	5.00
4 -5 ft.	3.00	7-8 ft.	6.00
		8-10 ft.	\$8.50

C. p. var. aurea—GOLDEN SAWARA RETINOSPORA. Type and habit same as Sawara Retinospora, only brilliant golden in color.

3-4 ft.	\$2.50	6-7 ft.	\$5.00
4-5 ft.	3.00	7-8 ft.	6.00
5-6 ft.	4.00	8-10 ft.	8.00

C. p. var. filifera—THREAD RETINOSPORA. Graceful, bushy plant, globular in outline with deep green, thread-like, drooping foliage.

1½-2 ft.	\$1.00	3-4 ft.	\$3.00
2½-3 ft.	2.00	4-5 ft.	4.00
		5-6 ft.	\$4.50

C. p. var. filifera aurea—GOLDEN THREAD RETINOSPORA. Same habit as preceding, except the young growth is a bright golden yellow. Unusual, very dwarf, colorful type.

15 in. high x 15 in. wide.	\$2.00
18 in. high x 18 in. wide.	3.00

C. p. var. plumosa—PLUME RETINOSPORA. Pyramidal tree with dense foliage, soft and plume-like; rich green shade.

2 -2½ ft.	\$1.00	5-6 ft.	\$5.00
2½-3 ft.	1.50	6-7 ft.	6.00
3 -4 ft.	2.75	7-8 ft.	7.50
4 -5 ft.	4.00	8-10 ft.	\$9.00-10.00

C. p. var. plumosa argentea—SILVERTIP RETINOSPORA. Dwarf habit, ends of branches silver tipped; almost ball shaped. Very beautiful.

12-15 in. high x 12-15 in. wide.	\$0.75
---------------------------------------	--------

C. p. var. plumosa aurea—GOLDEN PLUME RETINOSPORA. Tall, pyramidal, with bright golden foliage, soft and plummy. Makes rich appearance.

15-18 in.	\$0.50	4-5 ft.	\$4.00
2 -2½ ft.	1.00	5-6 ft.	5.00
2½-3 ft.	1.50	6-7 ft.	6.00
3 -4 ft.	2.75	7-8 ft.	7.50
		8-10 ft.	\$9.00-10.00

C. p. var. plumosa flavescens—GOLDEN DWARF RETINOSPORA. Dwarf, choice plant for foundation planting. Tips of young branchlets golden color, retained throughout Winter.

2-3 ft. high x 2-3 ft. wide.	\$2.00
-----------------------------------	--------

Cryptomeria—CRYPTOMERIA

An evergreen of unusual appearance, suggestive of Japanese effects. Tall growing; single main stem; short branches. Valuable specimen tree.

C. japonica lobbi—LOBB CRYPTOMERIA. (Japanese Cedar). Picturesque, narrow, irregular column with short dark green leaves crowded at the ends of the branches; bronzy in Winter.

2-2½ ft.	\$2.00
3-4 ft.	2.50

REDUCED PRICES ON LARGE ORDERS

Special reduced prices on large or truck-load orders. Send us your list of requirements for special quotations.

10% Discount When Five or More of One Variety and Size are Ordered at One Time

Quality Junipers For Every Planting Purpose— All The Rare and New Varieties

For diversity of form, size and color, suitable for any situation, together with hardiness, the Junipers have no peer. Will thrive in any soil. Varieties may be had from the quite prostrate to the narrow columnar. Most desirable of the medium-sized Evergreens.

Juniperus—THE JUNIPERS

J. chinensis—CHINESE JUNIPER. Mother plant of popular Pfitzer Juniper, but pyramidal in form. Bright green, slightly bluish. Very hardy. In height between *J. mas* and *J. stricta*.

3-4 ft. \$3.00

J. c. var. globosa—GLOBE CHINESE JUNIPER. Dwarf form, with rounded outline. Rich green foliage on densely crowded short branches. Valuable where low-growing plant is desired. Very rare and hardy variety.

18-24 in. \$4.00 | 24-28 in. \$6.00

J. c. var. fortunei—FORTUNE JUNIPER. Densely branched, pyramidal form, the new growth pendulous. Beautiful soft green. Very hardy.

3-4 ft. \$3.00 | 4-5 ft. \$3.50
5-6 ft. \$1.25

J. c. var. mas—COLUMNAR CHINESE JUNIPER. Dense, conical form; needle and scale-like foliage; retains live green color all winter.

2 -2½ ft. \$1.50 | 4-5 ft. \$3.50
2½-3 ft. 2.00 | 5-6 ft. 4.25
3 -4 ft. 2.75 | 6-8 ft. 6.00

J. c. var. pfitzeriana—PFITZER JUNIPER. Wide growing, with plumose, graceful horizontally spreading branches. Foliage, healthy blue-green. Our plants are trained almost as high as wide.

9-12 in. spread \$0.50
12-18 in. spread75
1½-2 ft. spread 1.25
2-2½ ft. spread 2.00
2½-3 ft. spread 2.50
3-4 ft. spread, 2½-3 ft. high (spec.) . . . 3.00
4-5 ft. spread, 3 -4 ft. high (spec.) . . . 4.00

J. c. var. pyramidalis—COLUMN CHINESE JUNIPER. Dense growing pyramidal type; deep blue-green winter and summer. Very hardy in any location.

2½-3 ft. \$1.50 | 5-6 ft. \$4.00
3 -4 ft. 2.50 | 6-7 ft. 5.00
4-5 ft. 3.25 | 7-8 ft. 6.00

J. c. var. sargentii—SARGENT JUNIPER. Prostrate habit; grass green foliage. Valuable ground cover and rock plant.

1½-2 ft. spread . . \$2.50 | 2-2½ ft. spread . . \$3.50

J. com. depressa plumosa—PURPLE SPREADING JUNIPER. Dwarf, spreading habit; foliage tinged with rich purple during fall and winter. Very beautiful. One of the most dependable dwarf evergreens.

8-12 in. spread . . \$0.50 | 2 -2½ ft. spread. \$2.50
12-18 in. spread . . .75 | 2½-3 ft. spread. 3.00
1½-2 ft. spread. . . 1.50 | 3 -3½ ft. spread. 4.00

J. excelsa stricta—SPINY GREEK JUNIPER. Slow, compact grower of medium height and wide base. Glaucescent, blue color.

12-15 in. \$0.75 | 1½-2 ft. \$1.50
15-18 in. 1.00 | 2 -2½ ft. 2.00
2½-3 ft. \$3.00



One of the most important and valuable decorative Junipers in cultivation is the dignified-looking Pfitzer Juniper. It is very hardy and will stand part shade.

J. horizontalis—CREEPING JUNIPER. Especially adapted to rock gardens and low base plantings. Greenish-blue, tinged purple over winter.

1-1½ ft. spread. . . \$1.50 | 1½-2 ft. spread. . . \$2.00

J. japonica—JAPANESE JUNIPER. Beautiful, low-growing plant with spreading branches. Foliage deep green, retained throughout Winter. Very hardy. Slow in growth but thrives in any soil.

1½-2 ft. \$2.50

J. squamata meyeri—MEYER JUNIPER (New). Choice, rare tree of shining blue color, tinted pink; dwarf, irregular habit. Ideal for Rock Gardens or mass planting. Very hardy and beautiful.

15-18 in. \$1.50 | 18-24 in. \$2.50

J. virginiana—REDCEDAR. Conical in growth; branches upright with dark green foliage.

6-8 ft. 6.00 | 8-10 ft. \$10.00

J. virg. burkii—BURKS JUNIPER. Dense columnar form; distinctive blue color in summer, plum-colored winter; very symmetrical.

3-4 ft. \$3.50 | 5-6 ft. \$6.50
4-5 ft. 5.25 | 6-7 ft. 8.00

Evergreens Should Be Kept Thoroughly Watered, Especially Before Ground Freezes.

Juniperus—JUNIPERS—(Continued)

- J. virg. cannarti*—CANNART REDCEDAR. Handsome, compact columnar habit, with rich dark green foliage and bluish, bloomy fruits.
- | | |
|--------------------|-------------------|
| 2½-3 ft.....\$2.50 | 5-6 ft.....\$6.00 |
| 3-4 ft.....3.75 | 6-7 ft.....7.00 |
| 4-5 ft.....5.00 | 7-8 ft.....8.00 |
- J. virg. elegantissima*—GOLDTIP REDCEDAR. Columnar, with side shoots curving over effectively, the tips bright yellow, turning bronze in winter.
- | | |
|--------------------|--------------------|
| 2-2½ ft.....\$2.00 | 2½-3 ft.....\$2.50 |
| 3-4 ft.....\$3.50 | |
- J. virg. glauca*—SILVER REDCEDAR. Excellent cone-shaped, vigorous grower; young growth silvery blue, changing to bluish-grey.
- | | |
|-----------------------------|-------------------|
| 2½-3 ft.....\$2.00 | 5-6 ft.....\$6.00 |
| 3-4 ft.....3.00 | 6-7 ft.....7.50 |
| 4-5 ft.....4.50 | 7-8 ft.....9.00 |
| 8-10 ft.....\$12.00-\$15.00 | |

- J. virg. keeleeri*—KETELEER REDCEDAR. Symmetrical, compact pyramidal growth. Beautiful intense green; formal in effect. Ideal planted on each side of the doorway to frame the entrance, or at corners of building. Fine pyramidal type, refined in appearance.
- | | |
|---------------------|-------------------|
| 2-3 ft.....\$2.00 | 5-6 ft.....\$5.00 |
| 3-4 ft.....3.00 | 6-7 ft.....6.00 |
| 4-5 ft.....4.00 | 7-8 ft.....7.00 |
| 8-10 ft.....\$10.00 | |
- J. virg. schottii*—SCHOTT REDCEDAR. Narrow pyramidal in form and dense in growth. Rich light green foliage. Retains color well in Winter and is perfectly hardy.
- | | |
|--------------------|-------------------|
| 2½-3 ft.....\$2.00 | 4-5 ft.....\$4.50 |
| 3-4 ft.....3.00 | 5-6 ft.....6.00 |
| 6-8 ft.....\$7.50 | |

Use Spruces For Outstanding Effects—They Make Splendid Lawn Specimens

Very ornamental Evergreens are the Spruces, which are valued especially for specimen planting. They are magnificent in appearance, with a regular pyramidal outline. Rapid growers and perfectly hardy, but too large growing for foundation planting. Strikingly effective in the winter landscape when covered with a snowy mantle.

Picea—THE SPRUCES

- P. alcockiana*—ALCOCK SPRUCE. Of close, graceful habit; slender, spreading branches, leaves rigid, 4-sided, but flattened, sharp pointed; glossy, dark green foliage.
- | | |
|---------------------|--------------------|
| 6-7 ft.....\$8.00 | 7-8 ft.....\$10.00 |
| 8-10 ft.....\$12.00 | |

- P. canadensis albertiana*—BLACK HILLS SPRUCE. Of conical shape and symmetrical outline; foliage bluish-green. A lower growing variety, compact and hardy; drought resisting.
- | | |
|--------------------|--------------------|
| 1-1½ ft.....\$1.00 | 2½-3 ft.....\$2.25 |
| 2-2½ ft.....1.75 | 3-3½ ft.....3.50 |

- P. excelsa*—NORWAY SPRUCE. Fast growing and especially valuable for screens and hedges.
- | | |
|---------------------|--------------------------|
| 12-18 in.....\$0.50 | 1-5 ft.....\$3.00 |
| 1½-2 ft......75 | 5-6 ft.....4.00 |
| 2-3 ft.....1.50 | 6-7 ft.....5.00 |
| 3-4 ft.....2.00 | 8-10 ft.....\$8.00-10.00 |

- P. orientalis*—ORIENTAL SPRUCE. Its classic outline and small, neat, glossy green needles closely clothing the branches make this a plant of uncommon beauty. Rare.
- | | |
|--------------------|--------------------|
| 1½-2 ft.....\$1.00 | 2-2½ ft.....\$5.00 |
|--------------------|--------------------|

- P. pungens*—COLORADO SPRUCE. Foliage of a light green color; withstands heat and drought.
- | | |
|--------------------------|-------------------|
| 1½-2 ft.....\$1.25 | 3-4 ft.....\$4.00 |
| 2-2½ ft.....2.00 | 4-5 ft.....5.00 |
| 2½-3 ft.....2.75 | 5-6 ft.....7.50 |
| 6-8 ft.....\$8.00-\$9.00 | |

- P. pungens glauca*—BLUE COLORADO SPRUCE. Same as above, except foliage has a bluish tinge.
- | | |
|--------------------|-------------------|
| 1½-2 ft.....\$2.00 | 3-4 ft.....\$7.00 |
| 2-2½ ft.....3.50 | 4-5 ft.....8.50 |
| 2½-3 ft.....5.00 | 5-6 ft.....10.00 |

- P. pungens kosteri*—KOSTER BLUE SPRUCE. Rich silvery blue, the Koster Blue Spruce is the most distinct Evergreen. Very hardy. Beautiful, broad, symmetrical tree.
- | | |
|-----------------------------------|-------------------|
| 12-15 in.....\$2.50 | 3-4 ft.....\$8.00 |
| 15-18 in.....3.50 | 4-5 ft.....10.00 |
| 1½-2 ft.....4.00 | 5-6 ft.....12.50 |
| 2-2½ ft.....5.00 | 6-7 ft.....18.00 |
| 2½-3 ft.....6.00 | 7-8 ft.....24.00 |
| 10-12 ft. (irregular).....\$40.00 | |
| 10-12 ft. (specimen).....125.00 | |



Koster Blue Spruce—most highly colored ornamental Evergreen. Desirable specimens are becoming scarcer and more sought after each year.

Evergreens under 4 ft. crated free; over 4 ft. add 25c per ft. extra to cover cost.

Pines in Both Dwarf and Tall Growing Sorts Make Picturesque Effects

Most valuable and majestic Evergreens for permanent planting are Pines, which as they grow older gain in character and picturesqueness. Spreading branches, bearing clusters of long, needle-shaped leaves. Will endure wide range of soil and climate.

Pinus—THE PINES

P. montana mughus — MUGHO PINE. Low, spreading pine with many stems spreading outward and then upward, the erect new growth resembling candles.

12-15 in. wide.....	\$1.00
15-18 in. wide.....	1.50
1½-2 ft. wide.....	2.00
2 -3 ft. wide.....	3.50
3 -4 ft. wide.....	5.00

P. nigra—AUSTRIAN PINE. Fast, tall growing tree with spreading limbs, heavily plumed with long rich, glossy, dark green, rigid needles.

2 -2½ ft.....	\$1.00
2½-3 ft.....	2.00
3 -4 ft.....	3.50
4 -5 ft.....	5.00
5 -6 ft.....	6.00
6 -8 ft.....	9.00
8 -10 ft.....	12.00

P. resinosa—RED PINE. Very hardy, tall growing tree with spreading, somewhat pendulous branches; reddish, smooth bark; dark green leaves.

2 -2½ ft.....	\$1.00
2½-3 ft.....	2.00
3 -4 ft.....	3.00
4 -5 ft.....	4.00
5 -6 ft.....	5.50
6 -8 ft.....	7.00
8 -10 ft.....	\$8.00-10.00

P. strobus—WHITE PINE. Tall tree with branches horizontal in regular whorls; slender, glaucous leaves, sweet-scented. Adapted to poor soil.

2 -2½ ft.....	\$1.00	5-6 ft.....	\$1.00
2½-3 ft.....	2.00	6-7 ft.....	5.00
3 -4 ft.....	2.50	7-8 ft.....	6.00
4 -5 ft.....	3.00	8-10 ft.....	9.00

P. sylvestris—SCOTCH PINE. Fast growing, tall, round-headed tree; twisted leaves with bluish-green hue; adapted to poorer soils.

2½-3 ft.....	\$1.50	4-5 ft.....	\$3.00
3 -4 ft.....	2.00	5-6 ft.....	4.00
6-8 ft.....	\$6.00		

P. tanyosha globosa—JAPANESE TABLE PINE. Unique, very dwarf Pine, with short stout trunk branching out evenly in numerous branches, forming a flat, table-like top.

2-2½ ft.....	\$3.00	2½-3 ft.....	\$1.00
--------------	--------	--------------	--------

Pseudotsuga—FIR

P. douglasi—DOUGLAS FIR. Rapid growing, with flat, dark greenish-blue foliage. One of our best tall growing Evergreens.

1½-2 ft.....	\$1.00	4-5 ft.....	\$4.00
2 -2½ ft.....	1.50	5-6 ft.....	6.00
2½-3 ft.....	2.00	6-7 ft.....	7.25
3 -4 ft.....	2.00	7-8 ft.....	9.00
8-9 ft.....	\$10.00-12.00		



A handsome tree, making a good lawn specimen is the Austrian Pine. The inset is a Mugho Pine, an attractive bushy Evergreen, much admired and very useful in Foundation Planting.

How "Will Grow" Evergreens are Grown, Dug, Shipped

Unequalled soil, frequent transplanting, and constant shearing give "Will Grow" Evergreens their great vigor and power to grow, their mass of fine, fibrous roots so necessary for success in transplanting and their bushy, symmetrical form.

Each "Will Grow" Evergreen is carefully hand-dug so as to obtain a large ball of soil to encase the roots. For additional protection against disturbing the roots each earth ball is securely burlapped. Careful packing, as a guarantee of safe arrival, completes the steps by which "Will Grow" Evergreens reach our Customers in the best possible condition.

Our catalog prices include balling, burlapping and packing of Evergreens up to 4 ft. For larger Evergreens to be packed for shipment add 25c per ft. to cover cost.

Shipments of "Will Grow" Evergreens, unless otherwise provided for, are made by freight as we find that method very satisfactory and most economical for the customer. Free delivery in full truck load lots within a radius of 50 miles.

Evergreens should be kept thoroughly watered, especially before ground freezes.

Aristocratic Yews Most Satisfactory For Shade or to Endure City Conditions

Handsome dark green foliage, adaptability to part shade, semi-dwarf habit, and refined and distinctive appearance give the Yews their high value as Evergreens for foundation and other ornamental planting. They succeed well in most soils and in part shade. Best evergreen family for difficult city conditions and foundation planting.



A most beautiful Evergreen is the Spreading English Yew. It is a most valuable plant as it is low growing and will thrive in the shade better than in full sun.

Taxus—THE YEWS

The Yews are especially beautiful in the Spring when the light-green tips of new growth show a marked contrast against a background of the black-green older foliage.

T. baccata dovastonii aureovariegata — **YELLOW DOVASTON YEW.** Low branching evergreen, dense and bushy. Ends of branches drooping, golden tipped. Very beautiful. Thrives in either sunny or shady locations.

12-15 in. \$2.00 | 15-18 in. \$2.50
3-4 ft. \$8.00

T. baccata repandens—**SPREADING ENGLISH YEW.** Of low, spreading habit; foliage glossy blue-green. Excellent for edging the foundation planting; thrives in shade or sun.

12-15 in. spread . . \$1.00 | 18-24 in. spread . . \$2.25
15-18 in. spread . . 1.50 | 2-2½ ft. spread . . 3.50

T. cuspidata—**JAPANESE YEW (Spreading Form).** Most vigorous of the Yews; very hardy; its dark, green foliage will retain its color through Winter. Its low, spreading habit and rich color make it excellent for foundation planting or hedges.

12-15 in. wide . . . \$0.90 | 2-2½ ft. wide . . . \$2.75
15-18 in. wide . . . 1.25 | 2½-3 ft. wide . . . 3.75
18-21 in. wide . . . 1.50 | 3-3½ ft. wide . . . 5.00
21-24 in. wide . . . 2.00 | 3½-4 ft. wide . . . 6.00
4-5 ft. wide \$8.00

T. cuspidata capitata—**UPRIGHT JAPANESE YEW.** Close, upright and compact grower; foliage dark green; fruit, bright scarlet. Hardest of the Yews; excellent in masses and invaluable for hedges.

1½-2 ft. \$2.00 | 3-3½ ft. \$5.25
2-2½ ft. 2.75 | 3½-4 ft. 7.00
2½-3 ft. 4.00 | 4 -5 ft. . . \$10.00-12.00

T. cuspidata nana (brevifolia)—**DWARF JAPANESE YEW.** Handsome, low, spreading, with short, dark green needles.

9-12 in. high x 10-12 in. wide . . \$1.00
12-18 in. high x 12-18 in. wide . . 1.50
18-21 in. high x 18-21 in. wide . . 2.50
21-24 in. high x 22-26 in. wide . . 3.75
24-28 in. high x 26-30 in. wide . . 5.75

T. media hicksi—**HICKS YEW.** Narrow, columnar type; dark green foliage; very hardy.

18-24 in. \$2.25 | 2-2½ ft. \$3.00

When and How to Plant Evergreens

Evergreens transplant best during the Spring months, before and just as new growth is beginning, or for several months following August 15 when the new growth is completed and has become sufficiently hardened.

The excavation for planting should be considerably larger and deeper than the encased roots so as to allow liberal space around the ball for filling in with good soil. Do not remove burlap, only loosen it at top and roll back as indicated in illustration. Carefully pack soil under earth ball and when hole is two-thirds refilled, flood with water.

In restoring the remainder of the excavated soil allow a shallow basin to remain around the tree to collect the rain and enable it to soak into the ground. Mulch with well-rotted manure or straw to conserve the moisture in the ground and keep it from becoming hard. In the Fall mound the soil against the plants.

Frequently direct a STRONG force of water against the under side of the foliage, when the sun is not shining, to preserve the vigor and beauty of the plant.



(1) DIG HOLE A FOOT LARGER AND DEEPER THAN BALL OF EARTH

10% Discount when five or more of one variety and size are ordered at one time.

Arborvitae Fill Many Planting Uses at Low Cost, Including Hedges

The clean, neat, compact appearance and soft foliage of the Arborvitae make them appropriate for the foundation planting where they are almost indispensable, and for specimen planting on small lawns as well as large areas; in grouping, bedding, bordering and formal gardening. Excellent for hedges. In window boxes they give an attractive effect.



Here are shown the American Arborvitae, a well-shaped, reliable tree, and the American Globe Arborvitae (inset), a very hardy variety well adapted to foundation planting.

Thuja—THE ARBORVITAE

T. occidentalis—AMERICAN ARBORVITAE. Broad conical tree; foliage bright green. Good for contrasting with low-growing varieties; also for screens and hedges.

3-4 ft.....	\$1.25	6-7 ft.....	\$4.00
4-5 ft.....	2.00	7-8 ft.....	5.00
5-6 ft.....	3.00	8-10 ft.....	6.00
10-12 ft.....	\$7.00-8.00		

Special Discount. Less 15% discount in lots of 50 or more American Arborvitae for hedge purposes.

T. oc. elegantissima—LEE GOLDEN ARBORVITAE. Compact, pyramidal plant; golden green foliage; dependable, hardy and vigorous in growth.

2 -2½ ft.....	\$1.00	5 -6 ft.....	\$3.50
2½-3 ft.....	1.50	6 -7 ft.....	4.00
3 -4 ft.....	2.00	7 -8 ft.....	5.00
4 -5 ft.....	2.50	8 -10 ft.....	7.00
10-12 ft.....	\$12.00-15.00		

T. oc. globosa—AMERICAN GLOBE ARBORVITAE. Grows naturally in ball-like form. Slender branches with light green foliage. Very hardy.

18-21 in.....	\$1.00	21-24 in.....	\$1.25
2-2½ ft. x 2½ ft.....	\$1.75		
2½ ft. x 3 ft.....	2.50		
3 ft. x 3½ ft.....	3.00		

T. oc. lutea—GEORGE PEABODY ARBORVITAE. Tall and columnar; bright golden foliage retained throughout year. Makes attractive color contrast.

2 -2½ ft....	\$1.00	3½-4 ft.....	\$2.70
2½-3 ft....	1.50	5 -6 ft.....	4.00
3 -3½ ft....	2.00	8 -10 ft.....	7.50

T. oc. pyramidalis—PYRAMIDAL ARBORVITAE. Narrow and columnar in growth; denser and darker green than American Arborvitae.

1½-2 ft....	\$0.50	5 -6 ft.....	\$3.50
2 -2½ ft....	1.00	6 -7 ft.....	4.50
2½-3 ft....	1.30	7 -8 ft.....	5.50
3 -4 ft....	1.60	8 -9 ft.....	6.50
4 -5 ft....	2.50	9 -10 ft.....	8.00
10-12 ft.....	\$10.00		

T. oc. rosenthali—ROSENTHAL ARBORVITAE. Columnar habit for formal use; foliage deep green; medium height.

3-4 ft.....	\$2.00	4-5 ft.....	\$3.00
-------------	--------	-------------	--------

T. oc. vervaeneana—VERVAENE ARBORVITAE. Denser and slower in growth than *occidentalis*; graceful, slender branches; foliage has an agreeable slight tinge of gold; bronzy in Winter.

5-6 ft.....	\$3.50	6-7 ft.....	\$4.50
-------------	--------	-------------	--------

T. oc. wareana—WARE (SIBERIAN) ARBORVITAE. Lower and denser than American Arborvitae with stouter branches; foliage bright green.

15-18 in....	\$0.50	2½-3 ft.....	\$1.80
1½-2 ft....	.30	3 -3½ ft.....	2.50
2 -2½ ft....	1.35	3½-4 ft.....	3.00

4-5 ft.....\$3.50

T. standishi—STANDISH ARBORVITAE. (Japanese Arborvitae). Large, handsome, unusual evergreen with widely spreading branches. Broadly pyramidal habit. Rich green foliage unchanging over Winter.

2-2½ ft....	\$1.50	2½-3 ft....	\$2.00
-------------	--------	-------------	--------

T. plicata—GIANT ARBORVITAE. Dense habit; most attractive blue-green pyramidal variety.

5-6 ft.....	\$1.00	6-7 ft.....	\$5.00
7-8 ft.....	\$6.50		

QUANTITY DISCOUNTS

10% discount when 5 or more Evergreens of one variety are ordered at one time.

10% additional discount on orders totaling \$100.00 or over.

Barr's "Will Grow" Evergreens are regularly pruned and sheared, giving superior value.

Thuja orientalis (*Biota*)—THE ORIENTAL ARBORVITAE

Branchlets in vertical planes, bright green on both sides, and delicately cut foliage distinguish the Oriental Arborvitae from the previous varieties. Graceful, egg-shaped or pyramidal plants with slender, ascending branches from near the base.

Biota aurea conspicua—GOLDSPIRE ARBORVITAE. Distinctive Evergreen; golden yellow in Spring, bronze yellow in Winter.

3-4 ft.\$2.50 | 4-5 ft.\$3.75
5-6 ft.\$5.00

B. aurea nana—DWARF GOLDEN ORIENTAL ARBORVITAE. Low, conical plant of slow growth; bright golden hue, becoming bronzetipped in winter. Excellent for foundation planting.

12-15 in.\$1.00
15-18 in. 1.50
18-24 in. 2.00

B. compacta—SIEBOLD ARBORVITAE. Dwarf plant of compact, conical habit, almost as wide as high; foliage light green. Desirable for very formal effects or for hedges.

2½-3 ft.\$1.50 | 3-3½ ft.\$2.00
3½-4 ft.\$3.00

B. compacta barri—DWARF ORIENTAL ARBORVITAE. Conical plant of slow growth, retaining its rich green color all winter.

3-3½ ft.\$2.50 | 3½-4 ft.\$3.00
4-5 ft.\$4.00

B. elegantissima—YELLOW COLUMN ARBORVITAE. Narrow and pyramidal; foliage golden-green changing to golden-bronze hue in winter. Valuable for color contrast.

3-4 ft.\$2.00 | 4½-5 ft.\$4.00
4-4½ ft. 3.00 | 5 -6 ft. 4.50
6-7 ft.\$5.00

Biota orientalis—ORIENTAL ARBORVITAE

The common Oriental Arborvitae (*Biota orientalis*) we have discontinued growing because it has proven generally unsatisfactory. It also suffers frequently from winter injury. In its place we suggest American Arborvitae (page 13) or better still the pyramidal types of Junipers (pages 9 and 10), all native trees of proven value and hardiness.

The Graceful Hemlock Unexcelled for Specimen Planting or Hedge Purposes

On the open lawn the Hemlock, acclaimed the most beautiful of American evergreens, is an outstandingly handsome specimen. Will remain small many years if sheared. Ideal for hedges, growing increasingly beautiful every year.



HEMLOCK—Pennsylvania State Tree.

The Hemlock is graceful in habit, and its distinct, small foliage is of a pleasing shade of green. It endures shade better than some of the other trees and stands clipping readily.

Tsuga—HEMLOCK

Soft, feathery foliage on graceful branches sweeping the ground. Excellent in shade. Desires cool, moist soil. Very hardy.

T. canadensis—CANADA HEMLOCK. Gracefully spreading and somewhat drooping branches. Shade enduring. For specimen planting or in groups, or can be used for clipped hedges.

1½-2 ft.\$1.00	4½-5 ft.\$5.00
2 -2½ ft. 1.50	5 -6 ft. 6.00
2½-3 ft. 2.00	6 -7 ft. 7.50
3 -3½ ft. 2.60	7 -8 ft. 9.00
3½-4 ft. 3.25	8 -9 ft. 11.00
4 -4½ ft. 4.00	9 -10 ft. 14.00

T. caroliniana—CAROLINA HEMLOCK. More compact, darker green and smaller growing than preceding. Yew-like foliage. Conspicuous, yellowish-brown cones. Very hardy.

3-3½ ft.\$4.00	5-6 ft.\$7.50
3½-4 ft. 5.00	6-7 ft. 9.00
4 -5 ft. 6.00	7-8 ft. 12.00

WAITING TO PLANT
IS WAITING TO LOSE

Prices have turned upward on many items of nursery stock. Plant NOW with Barr's low-cost, high quality plants. Results will flatter your decision.

Evergreens under 4 ft. crated free; over 4 ft. add 25c per ft. extra to cover cost.

Broad-Leaved Evergreen Shrubs

These splendid plants hold their rich green foliage all the year round and many varieties make a magnificent showing of bloom. Shaded situations are preferred by most of the varieties, giving them an added value in making them available for planting about the north foundations of houses or in shady corners. Prefer acid soil.



Abelia grandiflora always appears in the foreground of plantings or in masses by itself. Flowers from midsummer until freezing weather.

Abelia—ABELIA

- A. grandiflora*—GLOSSY ABELIA. Gracefully arching branches, shining dark green leaves; dainty, waxy, pinkish-white, fragrant flowers. 3-4 ft.
 2 yr. plants from 4 in. pots. \$0.50
 3 yr. plants, 18-24 in., B. & B. 1.00

Azalea—AZALEA

- A. amoena*—HARDY EVERGREEN AZALEA. Rosy-purple, double flowers in Spring in great masses. Leaves small; bronze in Winter. 3-4 ft.
 15-18 in., B. & B. \$1.50
 1½-2 ft. specimens, B. & B. 2.00
 2 -2½ ft. specimens, B. & B. 2.75
- A. hinodegiri*—CRIMSON EVERGREEN AZALEA. Bright red, double flowers; very showy. Leaves turn reddish in fall. 3-4 ft.
 8-10 in., B. & B. \$1.00 | 12-15 in., B. & B. \$2.00
 10-12 in., B. & B. 1.50 | 15-18 in., B. & B. 2.50
- A. hinomayo*—HINOMAYO AZALEA. Flowers a wonderfully clear, soft shade of pink. Resembles *hinodegiri* in habit and outline; foliage smaller, almost evergreen. 3-4 ft.
 18-24 in., B. & B. \$2.50
- A. ledifolia (indica alba)*—SNOW AZALEA. Profusion of large, single, white flowers. 3-4 ft.
 18-24 inches, B. & B. \$2.50
- A. yodogawa*—YODOGAWA AZALEA. Brilliant pinkish-lavender, double flowers in early Spring in lavish abundance. 3-4 ft.
 2-2½ ft., B. & B. \$3.50

Coloneaster—COTONEASTER

- C. horizontalis*—ROCK COTONEASTER. Dense, low plant; small, pink flowers; ornamental bright red fruit; semi-Evergreen. 1-1½ ft.
 Out of 4 in. pots \$0.50
 12-15 in. spread. (Grown in 6 in. pots). 1.50

Daphne—DAPHNE

- D. cneorum*—ROSE DAPHNE. (Garland Flower). Covered in May with beautiful pink, tubular flowers; fragrant. Valuable in rockeries. 1 ft.
 6-9 in., B. & B. \$0.75 | 9-12 in., B. & B. \$1.00

Euonymus—EUONYMUS

- E. patens (sieboldianus)*—SPREADING EUONYMUS. Handsome, large, dark green foliage; white flowers, July; red berries in Fall. 6-7 ft.
 2-2½ ft. \$0.75 | 2½-3 ft. \$1.25
- E. radicans*—See Vines, Page 31.
- E. rad. minimus (keuensis)*—BABY WINTER-CREEPER. Dainty trailing plant, suitable for rock garden use; tiny, round, green leaves. 6-12 in.
 3 year plants, potted \$0.35
- E. rad. variegatus*—VARIEGATED LEAF WINTER-CREEPER. Clinging vine; compact; small, variegated leaves.
 2 yr. potted plants \$0.35

- E. rad. vegetus*—BIGLEAF WINTERCREEPER. (Evergreen Bittersweet). Bushy growth, bright scarlet fruits. Will climb, or grow as bush. 3-4 ft.
 9-12 in., 2 yr. plants \$0.35
 12-15 in., 4 yr. plants75

Ilex—HOLLY

Nursery grown, transplanted Hollies such as here offered will give best results, and be sure to fruit.

- I. crenata*—JAPANESE HOLLY. Deep green, box-like leaves. Black berries. Unusually attractive in foundation plantings. 6-8 ft.
 1½-2 ft. \$2.50
- I. opaca*—AMERICAN HOLLY. Oval leaves, wavy margins, with spiny teeth. Red berries. (The Christmas Holly). 10-12 ft.
 2-3 ft. x 12-15 in. wide \$3.00
 3-4 ft. x 15-18 in. wide 3.50
 4-5 ft. x 18-24 in. wide 4.50
 5-6 ft. x 18-24 in. 6.00

Kalmia—LAUREL

(The Pennsylvania State Flower)

- K. latifolia*—MOUNTAIN LAUREL. Bright, dark-green leaves; large, showy clusters of rose-colored flowers. Needs acid soil. 4-8 ft.
 10-12 in., B. & B. \$0.75
 1½-2 ft., B. & B. 1.50
 2 -2½ ft., B. & B. 2.00

Leucothoe—LEUCOTHOE

- L. catesbaei (Andromeda)*—DROOPING LEUCOTHOE. Attractive, fragrant, white flowers in May, borne in long, pendulous racemes. 3-4 ft.
 12-18 in. clumps, B. & B. \$1.50
 18-24 in. clumps, B. & B. 1.80

Broad-Leaved Evergreens are Unexcelled for Foundation Planting—Especially North Side

Boxwoods—All 'Round Useful Plants

Boxwood lends itself to planting as specimens, in groups with other Evergreens, for hedges, and for borders. Will thrive in full sunlight, or in shady locations where no other Evergreen will grow. Give a light protection the first Winter after planting.

Buxus—THE BOXWOODS

B. sempervirens—**BOXBUSH.** Bushy, nearly as broad as high; deep rich color; slow growing. Frequently used for hedges. Most familiar of the Box. 12-15 ft. Ea. Per 10

10-12 in.....	\$0.50	\$1.50
12-15 in.....	.60	5.40
15-18 in., bushy, B.&B.....	.75	6.75
18-24 in. x 12-15 in. wide, B.&B.....	1.50	13.50
24-30 in. x 18-20 in. wide, B.&B.....	2.50	22.50

B. semp. arborescens—**TRUETREE BOX.** Tallest growing variety of Box, with loose, graceful habit. 15-18 ft. Ea. Per 10

18-24 in. x 12-15 in. wide, B.&B.....	\$1.50	\$13.50
24-30 in. x 18-20 in. wide, B.&B.....	2.50	22.50

B. semp. pyramidalis—**PYRAMIDAL BOXBUSH.** Specimens sheared to pyramidal form. Especially suitable for very formal effects, or for tubs.

1½-2 ft.....	\$2.00	2-2½ ft.....	2.50
--------------	--------	--------------	------

B. suffruticosa—**TRUEDWARF ENGLISH BOX.** Especially adapted to edging walks or as a low hedge. 3-4 ft. Ea. Per 10 Per 100

3- 4 in.....	\$0.10	\$0.90	\$ 7.50
4- 6 in.....	.20	1.80	15.00
6- 8 in.....	.30	2.70	22.50
8-10 in.....	.50	4.00	30.00
10-12 in.....	.60	5.00	40.00
12-14 in.....	1.25	10.00	
15-18 in.....	1.50		



Here is pictured an untrimmed Boxwood which makes a rich appearance. Boxwood will do well under trees. For difficult situations plant Boxwoods.

PLANT THE SMALL HOME AS WELL AS THE LARGE

Mere size is no measuring stick by which to judge the possibilities for beautiful grounds. The home on a small lot can have just as attractive surroundings as the largest estate in the land. In fact, some of the very prettiest and most tasteful plantings in the country today are to be found surrounding homes of modest size.

The city apartment dweller can often find a place for hardy flowers or other plants for his enjoyment. A vine growing on an apartment wall will add considerable beauty to the building.

The humble cottage and stately mansion both need a setting of growing things to attain their full beauty and both suffer equally as much by the lack of well planted, well-cared-for grounds.

Mahonia—OREGON GRAPE

M. aquifolium—**OREGON HOLLYGRAPE.** Bright, glossy-green, holly-like leaves, turning rich red and bronze in Autumn. Clustered racemes of attractive yellow flowers in Spring; berries black, covered with a bloom. 4-5 ft. 15-18 in., B.&B..... \$1.00

Pachysandra—PACHYSANDRA

P. terminalis—**JAPANESE PACHYSANDRA or SPURGE.** Evergreen ground cover with dense, glossy foliage forming thick carpet. 6-8 in. 1 yr., 4-6 in., per 10, \$1.00; per 100, \$5.00 2 yr., 4-6 in., per 10, \$1.50; per 100, \$7.50

Pieris—ANDROMEDA

P. floribunda—**MOUNTAIN ANDROMEDA.** Beautiful, hardy Evergreen Shrub with showy panicles of waxy white flowers in May. Deep green foliage. Prefers half shade. 2-4 ft. 12-15 in..... \$1.50

Pyracantha—FIRETHORN

P. coccinea—**SCARLET FIRETHORN.** Rich, glossy foliage; white flowers, followed by large clusters of orange berries. 8-10 ft. 12 -18 in., 6 in pots \$0.75 1½- 2 ft., 6 in. pots 1.00 2 - 3 ft., B.&B..... 2.00 (Guaranteed to fruit).

Yucca—YUCCA

Y. filamentosa—**COMMON YUCCA.** Leaves in a cluster at the base. Flower stalk rises 3-6 ft. and bears numerous creamy white flowers. Will grow satisfactorily in full sun or shade. 2 year plants..... \$0.35 3 year plants..... .50 (Green or Variegated-leaved varieties).

Broad-Leaved Evergreens are Unexcelled For Foundation Planting—Especially North Side.

Rhododendrons Solve a Difficult Problem

Beautiful shrub with thick, smooth, glossy, evergreen leaves, the Rhododendron is a very effective plant used in masses or groups or near dark-foliaged evergreens. It is excellent for the difficult shaded corner or on the north side of the house.

Rhododendron—RHODODENDRON

The Rhododendrons here listed are nursery-grown, and acclimated, and have had the benefit of careful transplanting by which they have gained root systems which will cause them to make better growth than ordinary collected plants.

Rhododendrons (and Azaleas) require acid soil. For best results, plant in a mixture of three parts leaf mould or Holland Peat to one part soil. In limestone localities one pound aluminum sulphate to each square yard of surface, Spring and Fall, will prove beneficial in acidifying the soil.

(See Rhododendron Food, Holland Peat and Aluminum Sulphate listed on page 48.)

R. carolinianum — **CAROLINA RHODODENDRON.** Light rose flowers appearing in early May. Low, compact plant. Will tolerate a position in sunshine. 3-4 ft.

- 1½-2 ft. clumps, B. & B.....\$3.00
- 2 -2½ ft. clumps, B. & B..... 4.00
- 2½-3 ft. clumps, B. & B..... 5.00
- 3 -4 ft. clumps, B. & B..... 6.00

R. car. album—**WHITE CAROLINA RHODODENDRON.** Pure white form of the preceding.

- 12-18 in. clumps, B. & B.....\$1.50
- 18-24 in. clumps, B. & B..... 2.00
- 2-2½ ft. clumps, B. & B..... 2.50

R. catawbiense—**CATAWBA RHODODENDRON.** Reddish violet flowers in late May. Thrives satisfactorily in half-shade. 4-6 ft.

- 1½-2 ft. clumps, B. & B.....\$2.00
- 2 -2½ ft. clumps, B. & B..... 2.50
- 2½-3 ft. clumps, B. & B..... 3.00

R. maximum—**ROSEBAY RHODODENDRON.** Flowers pale rose to nearly white, greenish in the throat. July. Thrives best in full shade. 6-10 ft.

- 2 -2½ ft., B. & B.....\$2.50
- 2½-3 ft., B. & B..... 3.00
- 3 -4 ft., B. & B..... 4.50
- 4 -5 ft., B. & B., extra specimens...\$7.00



Catawba Rhododendron with lower growing plants filling the foreground.

HYBRID RHODODENDRONS—Large flowers of clear color. Thrive in full sun or part shade. Best hardy varieties in Pink, Lavender or Red. State color. 5-8 ft.

- 15-18 in., B. & B.....\$4.00
- 1½-2 ft., B. & B..... 5.00

(Larger sizes quoted on application.)

HYBRID SEEDLINGS—Mixed Colors.

- 1½-2 ft., B. & B.....\$2.00
- 2-2½ ft., B. & B..... 2.50

When to Plant All Kinds of Stock

Deciduous Trees, Shrubs and Vines.

From the time the ground opens in the Spring until the plant starts growth, and again from the time the wood is ripened and the leaves begin to fall in the Autumn until the ground is frozen. (March 10 to May 15, and Oct. 1 to Dec. 15.)

After May 15 planting of Trees and Shrubs can still be continued if Balled and Burlapped plants are used. For this there is an extra charge of 20c each for Shrubs. Cost of Balling and Burlapping of Trees depends on size. This will be quoted on request. Where B. & B. is stated there is no extra charge.

Coniferous and Broad-leaved Evergreens.

After abundant rains of August to late Fall, and in the Spring until the new growth starts. (April 1 to June 15, and August 1 to November 30.)

Perennials

Spring or Autumn. (April 1 to June 1, and Sept. 1 to Nov. 30.)

Grass Seed

Spring or Autumn. (March 10 to May 20, and Aug. 1 to Oct. 1.)

Allow reasonable time for filling orders received during the shipping season, as orders are filled in rotation. **ORDER EARLY.**

For the North Side of the House, Rhododendrons are Ideal.

Barr's Shade and Ornamental Trees

For shade or for ornament the Deciduous Tree is a necessity for the home grounds. In the wealth of their stately trees lies the beauty of many old homesteads. New homes without trees to add to their desirability, comfort and value, stand out bare and repellent.

Figures immediately following descriptions indicate ultimate height which those varieties will attain.



The Norway Maple is generally recognized as one of the finest medium-sized trees for street planting or for single lawn specimens.

Acer—THE MAPLES

A. platanoides—NORWAY MAPLE. Handsome, round-headed tree with broad, smooth, deep green leaves, holding color till late in Fall, when they turn attractively golden. 50-75 ft.

	Ea.	Per 10
6-8 ft.	\$1.50	\$12.50
8-10 ft., 1-1 1/4 in. cal.	2.50	20.00
8-10 ft., 1 1/4-1 1/2 in. cal.	3.00	25.00
10-12 ft., 1 1/2-2 in. cal.	3.50	30.00
12-14 ft., 2-2 1/2 in. cal.	4.00	35.00
12-14 ft., 2 1/2-3 in. cal.	5.00	40.00
12-14 ft., 3-3 1/2 in. cal.	6.50	55.00
14-16 ft., 3 1/2-4 in. cal.	9.00	
15-18 ft., 4-5 in. cal.	12.00	
18-24 ft., 7-10 in. cal. specimens.	\$50.00-75.00	

A. platanoides schwedleri—SCHWEDLER PURPLE MAPLE. Similar to Norway Maple, except leaves are deep purple in Spring, changing to dark green. Very attractive tree. 30-40 ft.

8-10 ft., 1 1/4-1 1/2 in. cal.	\$3.00
10-12 ft., 1 1/2-2 in. cal.	3.50
10-12 ft., 2-2 1/2 in. cal.	4.00
12-14 ft., 2 1/2-3 in. cal.	5.00
12-14 ft., 3-3 1/2 in. cal.	6.50

A. rubrum—RED MAPLE. Shade tree with dense round head. Green-leaved, turning gorgeous scarlet in Autumn. Do not confuse with Bloodleaf Japanese Maple. 40-60 ft.

8-10 ft., 1-1 1/2 in. cal.	\$3.00
10-12 ft., 1 1/2-2 in. cal.	3.50
12-14 ft., 2-2 1/2 in. cal.	4.00
12-14 ft., 2 1/2-3 in. cal.	5.00
12-14 ft., 3-4 in. cal.	9.00

A. saccharinum wieri—WIER MAPLE. Graceful, half-drooping habit; delicately cut leaves. 50 ft.
8-10 ft. \$2.50

A. saccharum—SUGAR MAPLE. Handsome tree, upright and dense in growth; large leaves, assuming beautiful yellow or scarlet in fall. Best maple for street planting. 40-60 ft.

6-8 ft.	\$1.50
8-10 ft.	2.50
10-12 ft., 1 1/4-1 1/2 in. cal.	3.00
12-14 ft., 1 1/2-2 in. cal.	3.50
12-14 ft., 2-2 1/2 in. cal.	4.00
12-14 ft., 2 1/2-3 in. cal.	5.00
14-16 ft., 3-4 in. cal.	9.00

A. palmatum—JAPANESE MAPLE

Beautiful low growing trees or shrubs. Attractive as single specimens on the lawn or in masses. Will grow and retain color best in full sun.

A. palmatum atropurpureum—BLOODLEAF JAPANESE MAPLE. Leaves star-shaped, blood red in spring and early summer; in autumn assuming striking tints of red. 10-15 ft.

12-15 in., B. & B.	\$1.10
15-18 in., B. & B.	1.50
1 1/2-2 ft., B. & B.	2.00
2-2 1/2 ft., B. & B.	3.00
2 1/2-3 ft., B. & B.	4.50
3-3 1/2 ft., B. & B.	6.00

A. palmatum atropurpureum dissectum—CUTLEAF BLOODLEAF JAPANESE MAPLE. Finely cut leaves, blood red in spring and early summer, assuming striking tints of red in autumn. 8-10 ft.

12-15 in. wide, B. & B.	\$4.00
15-18 in. wide, B. & B.	5.00

A. palmatum dissectum—GREEN CUTLEAF JAPANESE MAPLE. Very attractive because of its finely cut green leaves, assuming orange shades in late Fall. 4-6 ft.

15-18 in. x 18-24 in. wide, B. & B.	\$4.00
1 1/2-2 ft. x 2-2 1/2 ft. wide, B. & B.	5.00

Aesculus—HORSE CHESTNUT

A. hippocastanum—HORSE CHESTNUT. Fine, tall tree; large white flowers with yellow spots becoming crimson; fruit prickly. 30-40 ft.

8-10 ft., 2-2 1/2 in. cal.	\$3.00
----------------------------	--------

Betula—BIRCH

Highly colored bark, light, slender branches and airy foliage; pyramidal in form. Very ornamental lawn tree, attractive in winter as well as in summer.

B. alba—EUROPEAN WHITE BIRCH. Elegant tree with silvery-white bark and spray-like branches; assuming effective drooping habit; small triangular leaves. 40-50 ft.

	Not B.&B.	B.&B.
8-10 ft.	\$2.00	\$2.50
10-12 ft., 1 1/2-2 in. cal.	4.00	4.50
12-14 ft., 2 1/2-3 in. cal.	5.00	6.50
12-14 ft., 3-3 1/2 in. cal.	6.50	8.50

Trees Over 4 in. Cal. B. & B. and Delivered By Truck Extra at Cost.

B. alba laciniata—**CUT-LEAF WEEPING BIRCH.** Silvery-white bark, drooping branches and finely cut, bright foliage. The official Mother's Tree of America. 30-40 ft.

	Not B.&B.	B.&B.
6- 8 ft.....	\$2.25	
8-10 ft., 1¼-1½ in. cal.....	3.00	\$4.00
10-12 ft., 1½-2 in. cal.....	4.00	5.00
12-14 ft., 2 -2½ in. cal.....	6.00	7.00

B. populifolia—**GRAY BIRCH.** Bark gray, close, smooth, with triangular black patches below the limbs. 30-40 ft.

	Not B.&B.	B.&B.
10-12 ft., 2 -2½ in. cal.....	\$1.50	\$5.00
10-12 ft., 2½-3 in. cal.....	5.00	6.00

Carpinus—HORNBEAM

C. caroliniana—**AMERICAN HORNBEAM.** Low, bushy tree; dark, bluish-green foliage turning beautiful orange and scarlet in the fall. 20-30 ft.

10-12 ft., 3-3½ in. cal., B. & B.....	\$10.00
---------------------------------------	---------

Catalpa—CATALPA

C. bign. nana—**UMBRELLA CATALPA.** Formal tree, with stem 5-7 ft. high on which is grafted a round and dense growing head. 10 ft.

5-6 ft. stem, 2 year head	\$1.50
---------------------------------	--------

Cercis—REDBUD

C. canadensis—**AMERICAN REDBUD.** Conspicuous in early spring for its profusion of pinkish-red flowers before the leaves appear. 12-15 ft.

2-3 ft.....	\$0.50
5-6 ft., B. & B.....	1.50

Chionanthus—FRINGETREE

C. virginica—**WHITE FRINGETREE.** Attractive, fragrant, tassel-like, white flowers, May-June. Rich, heavy foliage. 15-18 ft.

4-5 ft., B. & B.....	\$2.00
----------------------	--------



The Dogwood is a very showy small tree, either in the White Flowering or Red Flowering variety. In the Fall the foliage is a rich crimson.



OFFICIAL MOTHER'S TREE OF AMERICA
The attractive silvery-white bark, and gracefully drooping branches of the Weeping Birch make a strong appeal in summer or in winter.

Cornus—DOGWOOD

Small ornamental tree for lawn decoration; pretty in border with Evergreens, or in masses. Showy spring flowers, followed by bright-red berries.

C. florida—**FLOWERING DOGWOOD.** Showy white "flowers" in Spring before the leaves appear. Very handsome tree in Fall with brilliant scarlet berries and rich crimson foliage. 12-20 ft.

	Not B.&B.	B.&B.
3-4 ft.....	\$0.75	
4-5 ft.....	1.00	
5-6 ft.....	1.90	\$2.15
6-8 ft.....	3.00	3.50
8-10 ft.....	4.50	5.50

C. florida rubra—**RED FLOWERING DOGWOOD.** Deep rose "flowers" make very impressive sight. Brilliant fall foliage. 12-18 ft.

	Not B.&B.	B.&B.
3 -3½ ft.....	\$2.00	\$2.50
3½-4 ft.....	2.50	3.00
4 -4½ ft.....	3.00	3.50
4½-5 ft.....	3.50	4.00
5 -6 ft.....	5.00	5.50
6 -7 ft.....	6.50	7.00
7 -8 ft., B. & B. only.....		9.00

**VALUE IS IN CALIPER
RATHER THAN IN HEIGHT**

When buying trees look to caliper measurement (cal.) as that is true index to value.

We recommend planting trees 4 in. cal. and over with a ball of earth for which there will be an extra charge as follows, if item is not designated B. & B.: 1-4½ in., \$8.50; 4½-5 in., \$11.00; 5-5½ in., \$15.00; 5½-6 in., \$18.00; 6-7 in., \$25.00.

Barr's "Will Grow" Trees are Regularly Pruned, Giving Superior Value.



The Washington Thorn is especially attractive covered in the Spring with corymbs of snowy flowers, and in the Fall for its bright red berries.

Crataegus—THORN

Excellent small trees with beautiful, glossy-green foliage; showy and fragrant in their Spring bloom, and colorful in Fall by reason of the brilliance of the foliage. Ornamental red fruit, long persisting.

C. coccinea—THICKET THORN. Showy with large scarlet fruit; smooth, sharply cut-toothed, large leaves; white flowers. 12-15 ft.
10-12 ft., 3-4 in. cal. specimens, B. & B. \$10.00

C. cordata—WASHINGTON THORN. Brilliant Autumn foliage; white flowers, bright red fruit in fall and winter. 10 ft. Not B.&B. B.&B.
4-5 ft. \$2.00
7-8 ft. 3.50
8-10 ft., 2½-3 in. cal. specimens,
B. & B. \$6.00-8.00

C. crusgalli—COCKSPUR THORN. Attractive, white flowers, shiny green foliage; useful for hedges or for planting as specimens. 10-12 ft.
8-10 ft., bushy plants, B. & B. . . . \$8.00

C. oxycantha—ENGLISH HAWTHORN. Covered in Spring with fragrant, white flowers and in Fall with bright red fruit; hushy. 10-12 ft.
4-5 ft. \$1.50
5-6 ft. 2.00

C. oxycantha pauli—PAUL SCARLET THORN. Showy; numerous large, scarlet-crimson flowers. 12-15 ft.
4-5 ft. \$2.00
5-6 ft., B. & B. 3.50

Diospyros—PERSIMMON

D. virginiana—PERSIMMON. Symmetrical tree; very beautiful, clean foliage and exceptionally attractive bark. Fruit edible after frost. 20-40 ft.
8-10 ft. \$2.50

Fagus—BEECH

Dignified tree of handsome appearance for lawn or park planting. Branches sweep the ground. Symmetrical tree, with beautiful bark. Transplants best in Spring and requires severe pruning when transplanted. Slow growing, but becomes a charming, rare specimen.

F. americana—AMERICAN BEECH. Beautiful tree with dense round head; close and smooth, light gray bark. Branching close to ground, making handsome specimen tree. 40-50 ft.
4-5 ft., B. & B., low branched . . . \$3.50
5-6 ft., B. & B., low branched . . . 4.50
6-7 ft., B. & B., low branched . . . 6.50
7-8 ft., B. & B., low branched . . . 8.00
8-10 ft., 3-4 in. cal., B. & B., low
branched \$20.00-30.00

F. sylvatica—EUROPEAN BEECH. More compact in habit than *F. americana* and smaller leaves, particularly beautiful in their Spring coloring; branches close to ground. 40-50 ft.
4-5 ft., B. & B., low branched . . . \$3.25
5-6 ft., B. & B., low branched . . . 4.25
6-7 ft., B. & B., low branched . . . 7.00
7-8 ft., B. & B., low branched . . . 8.00

F. syl. heterophylla (asplenifolia)—FERNLEAF BEECH. Graceful, dense, low shrubby tree with narrow, deeply toothed and lobed foliage, but otherwise resembling European Beech. 20-30 ft.
3-4 ft., B. & B. \$5.00

F. syl. pendula—WEeping BEECH. Fine ornamental specimen that should be set alone where it can be admired. Broad, downward sweeping branches, bending to the ground. 25-35 ft.
4-5 ft., B. & B. \$7.00

F. syl. riversi—RIVERS PURPLE BEECH. Intensely colored tree; large, dark, crimson-purple leaves holding color throughout season. 35-40 ft.
3-4 ft., B. & B. \$6.00
4-5 ft., B. & B. 7.50
5-6 ft., B. & B. 10.00

Fraxinus—WHITE ASH

F. americana—WHITE ASH. Handsome, rapid-growing, open, broad-beaded tree; straight, clean trunk; smooth gray bark. Good for street planting, parks or large lawns. 60-70 ft.
8-10 ft. \$1.35
14-16 ft., 2½-3 in. cal. 4.00
14-16 ft., 3-4 in. cal. 6.00
16-18 ft., 4-4½ in. cal. 12.00

Ginkgo—GINKGO TREE

G. biloba—MAIDENHAIR TREE. Picturesque, pyramidal tree with clean, straight trunk, and fan-shaped, Maidenhair Fern-like leaves; immune from insects; widely used street and park tree on account of fine upright habit. 50 ft.
5-6 ft. \$2.50
6-8 ft. 3.00
8-10 ft., ¾-1 in. cal. 3.75
10-12 ft., 1¼-1½ in. cal. 5.00

Only Balled and Burlapped (B. & B.) Trees Can Be Planted after Leaves Appear.



The White Ash is one of our most majestic trees and is equally adapted to lawn or street planting. Spreading in growth; rather open foliage.

Gymnocladus—COFFEE TREE

G. dioica—KENTUCKY COFFEE TREE. Open headed tree; free from diseases or insects. Immense blue-green leaves. White flowers in open racemes, followed by interesting fruit-pods, persisting through the winter; useful for bold plantings by reason of its picturesque outline. 40 ft.

8-10 ft., 1 -1½ in. cal. \$3.50
 10-12 ft., 1½-2 in. cal. 4.00

Halesia—SILVERBELL

H. tetraptera—GREAT SILVERBELL. Drooping, snow-white, bell-shaped flowers in profusion in May. Decorative brown, winged fruits. 12-15 ft.

5-6 ft. \$1.00
 6-8 ft. 1.25

Koelreuteria—GOLDENRAIN TREE

K. paniculata—GOLDENRAIN TREE (Varnish Tree). Pretty medium-sized lawn tree; handsome light-green compound leaves turning rich, golden brown; small yellow flowers in large terminal, upright panicles appearing in summer, followed by conspicuous bladder-like pods. 30 ft.

6-8 ft. \$2.75

Laburnum—GOLDENCHAIN

L. vulgare—GOLDENCHAIN. Handsome small tree; dark green leaves falling late in autumn, long graceful chains of bright yellow, pea-shaped flowers in late Spring; will grow in part shade; insect and disease resistant. 12-14 ft.

5-6 ft. \$1.50
 6-8 ft. 2.00

Larix—LARCH

L. europae—EUROPEAN LARCH. Low-branching, deciduous, evergreen-like tree; branches slender, tips pendulous. Very attractive in early spring, when the bright green, needle-like foliage is studded with purplish pistillate flowers; rapid growing. 50-60 ft.

5-6 ft., B. & B. \$2.50
 6-8 ft., B. & B. 4.00
 8-10 ft., 2-2½ in. cal., B. & B. 5.00

Liquidambar—SWEET GUM

L. styraciflua—SWEET GUM. Symmetrical tree with conical crown, leaves maple-like and glossy, fragrant when bruised, changing to brilliant crimson in fall. Fine for lawns and avenues. Prune severely when transplanting. 50-75 ft.

Not B.&B. B.&B.
 9-10 ft., 1½-2 in. cal. \$3.75 \$4.50
 10-12 ft., 2 -2½ in. cal. 5.00 6.00
 10-12 ft., 2½-3 in. cal. 6.00 8.00
 12-14 ft., 3 -3½ in. cal. 8.00 10.00

Liriodendron—TULIP TREE

L. tulipifera—TULIP TREE. Very handsome pyramidal tree; tulip-like flowers, yellow with orange and green, in profusion in late Spring. Plant in Spring and prune closely. 50-75 ft.

8-10 ft. \$2.25
 10-12 ft. 3.50
 12-14 ft., 2-2½ in. cal., B. & B. 6.00

HOW TO PLANT A TREE

Very carefully protect the roots from sun and air. Plant in holes dug much larger than the spread of the roots so that the latter can be carefully placed in their natural directions; tap roots of oak trees should extend straight down. Fill the hole with good, rich soil.

The tree should stand two inches deeper than it did in the nursery. Work the soil firmly under and about the roots. When the hole is two-thirds filled, water thoroughly to set soil about roots and furnish moisture to the tree in abundance. Complete the filling of the hole, then mulch with strawy manure spread three inches deep over the whole area.

Before setting trim the branches of small trees by removing three-fourths of last year's growth; on heavily branched trees cut out a few small branches at their base to reduce demands on the disturbed roots. Oak trees should never have the central leader cut, but otherwise should be severely pruned.



RIGHT WAY TO PLANT A TREE

Trees Over 4 in. Cal. B. & B. and Delivered By Truck Extra at Cost.

Magnolia—MAGNOLIA

American varieties flower after the leaves appear; oriental, before, and more profusely.

- M. glauca*—SWEETBAY. Handsome, small tree with large, globular, creamy white, very fragrant flowers 2-3 in., across; fruit pink and showy; long glossy leaves. Likes acid soil. American. 20 ft.
2-3 ft., B. & B.\$2.25
- M. soulangeana*—SAUCER MAGNOLIA. One of the most popular; showy flowers, pink outside, white within; glossy foliage. Oriental. 12-18 ft.
2-3 ft., B. & B.\$2.50
3-4 ft., B. & B. 3.50
4-5 ft., B. & B. 5.00
5-6 ft., B. & B. 7.00
6-7 ft., B. & B. 8.00
- M. so. lennei*—LENNE MAGNOLIA. Deep rose, large, cup-shaped flowers. Oriental. 12-13 ft.
2-3 ft., B. & B.\$5.00
3-4 ft., B. & B. 6.50
4-5 ft., B. & B. 8.50
7-8 ft., B. & B.\$12.00-15.00
- M. so. nigra*—PURPLE LILY MAGNOLIA. Late flowering, many branched variety with dark purple blooms. Oriental. 12-18 ft.
2-3 ft., B. & B.\$5.00
3-4 ft., B. & B. 6.50
4-5 ft., B. & B. 7.50
- M. tripetala*—UMBRELLA MAGNOLIA. Immense leaves, crowded in umbrella-like clusters; large white flowers, surrounded by leaves. Fruit rose colored, cone-like. American. 30-40 ft.
6- 8 ft., B. & B. \$3.50
14-16 ft., 3-1 in. cal., B. & B. 18.00
16-18 ft., 4-5 in. cal., B. & B. 25.00



A handsome, ornamental tree, covered with fragrant flowers resembling small shell-pink roses is the Bechtel Crab shown above.



The Magnolia is one of the most attractive, ornamental lawn trees that can be planted. Very conspicuous tree when in bloom in the Spring.

Malus—FLOWERING CRAB

These small trees are always more useful for small home grounds than the larger trees.

- M. floribunda*—JAPANESE FLOWERING CRAB. Distinguished for its very profuse rose-colored, single flowers, 1-1¼ in. across, appearing early with the foliage; fruit small, yellow. 10-15 ft.
4-5 ft.\$1.50
5-6 ft. 2.00
- M. flori. atrosanguinea*—CARMINE CRAB. Rich, fadeless deep carmine, single flowers in great profusion making a splash of color. 10-15 ft.
4-5 ft.\$1.50
6-7 ft. 2.00
- M. ioensis plena*—BECHTEL CRAB. Large, double, fragrant flowers, delicate shell-pink, resembling small roses. Last of the Crabs to flower. Attractive foliage. 10-15 ft.
3-4 ft.\$1.25
4-5 ft. 2.00
- M. purpurea*—PURPLE CRAB. Attractive, reddish-purple foliage; carmine flowers in profusion. Fine as specimen or in shrub border. 10-15 ft.
4- 6 ft.\$2.00
- M. scheideckeri*—SCHEIDECKER CRAB. Many large semi-double, tinged pink flowers in handsome clusters. Large, yellow fruits. 10-12 ft.
8-10 ft.\$3.50
- M. sieboldi*—TORINGO CRAB. Particularly handsome in Autumn for brilliant yellow or red fruits. Flowers blush, ¾ inch across, in abundance. 12-15 ft.
1-5 ft.\$2.50

Barr's Trees are Freshly Dug on Receipt of Order—Not Cold Storage Stock.

Morus—MULBERRY

M. alba pendula—TEA'S WEeping MULBERRY. Grafted on straight stem, its drooping branches densely covered with deep-green leaves completely hide the stem and sweep the ground. 8-10 ft. 5-6 ft. stem, 2 yr. heads.....\$2.00

Oxydendrum—SOURWOOD

O. arboreum—SOURWOOD. Graceful clusters of white flowers in August. Foliage vivid scarlet in Autumn. Wants acid soil. 10-20 ft. 3-4 ft., B. & B.\$1.15

Platanus—PLANETREE

P. orientalis—EUROPEAN PLANETREE. (Oriental Plane.) Good for smoky atmospheres of cities; also valued for park planting. Large head of bright green, maple-shaped foliage. Rapid growing; not troubled by insects. 50-60 ft.

	Ea.	Per 10
8-10 ft.....	\$1.25	\$10.00
8-10 ft., 1-1½ in. cal.....	2.00	18.00
10-12 ft., 1½-2 in. cal.....	3.00	25.00

Populus—POPLAR

P. nigra italica—LOMBARDY POPLAR. Narrow-pyramidal tree of quick growth; for landscape effects and screens. 50-60 ft.

	Ea.	Per 10
6- 8 ft.....	\$0.60	\$5.00
8-10 ft.....	1.00	8.50
12-14 ft., 1½-2 in. cal.....	2.00	17.50



For city planting there is no tree superior to the European Planetree. Will withstand unfavorable conditions of city planting.

For Small Trees of Exquisite Beauty Use Flowering Cherries or Plums (*Prunus*)

Picturesque trees of exquisite color and fragrance are the Flowering Cherries and Plums. When the Japanese Cherries in Washington, D. C., are in bloom, thousands of persons travel great distances to see the notable display.

FLOWERING CHERRIES

P. serrulata (*Kwansan*)—DOUBLE ROSE FLOWERING CHERRY. Medium early bloom. Large, double rose-pink flowers. Most popular variety. 20-25 ft.

4-5 ft.....	\$1.50		5-6 ft.....	\$2.00
7-8 ft.....				\$5.00
8-10 ft., 3-4 in. cal., B. & B.....				10.00

P. ser. (*Kofugen*)—DOUBLE PINK FLOWERING CHERRY. Deep pink, double flowers. One of the best. 20-25 ft.

4- 5 ft.....	\$1.50
8-10 ft., 3-4 in. cal., B. & B.....	10.00
8-10 ft., 4-5 in. cal., B. & B.....	15.00

P. ser. (*Mt. Fuji*)—DOUBLE WHITE FLOWERING CHERRY. Large, double, snow-white flowers; very showy; vigorous. 20-25 ft. 4-5 ft.....\$1.50 | 5-6 ft.....\$3.50

P. ser. (*Naden*)—SIEBOLD CHERRY. Late flowering pink; semi-double; very beautiful and popular. 20-25 ft. 4-5 ft.....\$1.50 | 5-6 ft.....\$3.50

P. ser. (*Shirofugen*)—DOUBLE PINK FLOWERING CHERRY. Large, double, light pink flowers. Late flowering. 6-7 ft., 2-2½ in. cal.....\$4.00

P. subhirtella pendula—SINGLE WEeping JAPANESE CHERRY. Clothed in May with profusion of single pink flowers in small clusters on drooping branches almost touching the ground. 15-20 ft.

5-6 ft. stem, 3 year head.....	\$2.50
8-10 ft., 3-4 in. cal., B. & B.....	10.00
8-10 ft., 4-5 in. cal., B. & B.....	15.00

P. sub. pendula fl. pl.—DOUBLE WEeping JAPANESE CHERRY. Similar to former, except flowers are double. 15-20 ft.

5-6 ft. stem, 2 yr. head.....	\$2.50
5-6 ft. stem, 1½-2 in. cal., B. & B.....	6.00

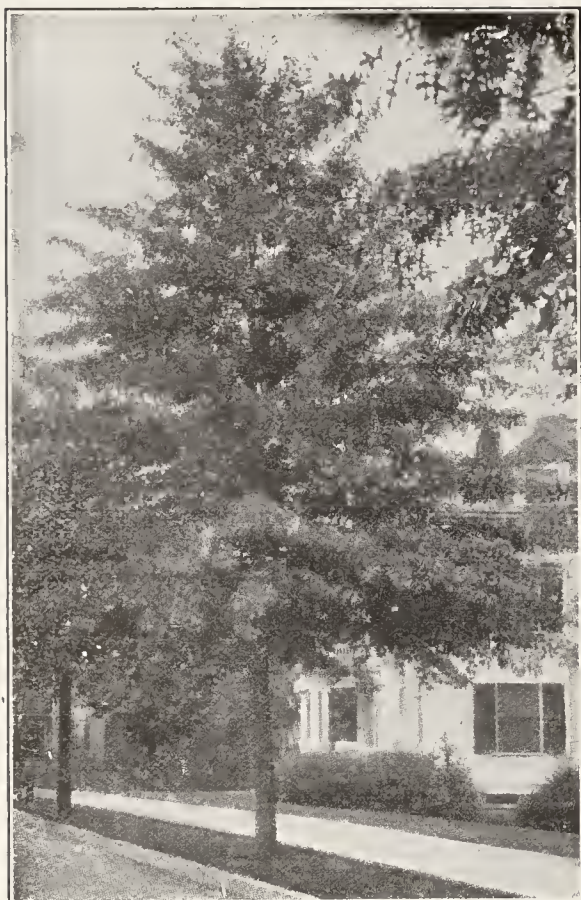
FLOWERING PLUMS

P. pissardi—PURPLELEAF PLUM. Bright purple leaves holding their color all Summer. Dark wine-red flowers in profusion. Prune every year for best color effect. 8-10 ft.

4- 5 ft.....	\$1.50
8-10 ft., 2-2½ in. cal.....	5.00

P. triloba—DOUBLE FLOWERING PLUM. (Rose Tree of China.) Upright in growth; slender branches completely covered with double pink flowers before leaves. 6-10 ft. 2-3 ft.....\$0.75 | 3-4 ft.....\$1.00

Flowering Cherry Trees Over 5 ft. High, Balled and Burlapped at \$1.00 Additional.



As a shade, park or avenue tree the Pin Oak, on account of its rapid growth, beautiful form, and glorious autumnal foliage, deserves to be planted extensively.

Quercus—OAK

Majestic trees, valued for strength and beauty of form. Do best in a neutral soil or one containing but little lime. Prune severely when transplanting but do not cut main leader.

Q. alba—WHITE OAK. Noble tree with light gray bark and broad, open head; foliage a beautiful red purple in the Fall. 75-100 ft.

8-10 ft., 1½-2 in. cal.	\$6.00
10-12 ft., 2-2½ in. cal., B. & B.	9.00
12-14 ft., 3-4 in. cal., B. & B.	20.00

Q. coccinea—SCARLET OAK. Deeply cut, bright green, glossy leaves becoming brilliant scarlet in Autumn; stately tree. 70-90 ft.

6-8 ft.	\$4.00
8-10 ft., 1½-2 in. cal.	6.00
10-12 ft., 3-4 in. cal., B. & B.	19.00

Q. palustris—PIN OAK. Rapid growing; pyramidal head. Glossy green leaves turn beautiful crimson in Autumn. Don't plant deep. 40-60 ft.

Not B.&B. B.&B.

6-8 ft.	\$2.00
8-10 ft., 1¼-1½ in. cal.	2.75
10-12 ft., 1½-2 in. cal.	4.50
12-14 ft., 2-2½ in. cal.	6.00
14-16 ft., 2½-3 in. cal.	8.00
14-16 ft., 3-4 in. cal.	12.00
16-18 ft., 4-5 in. cal.	20.00
16-18 ft., 5-6 in. cal.	25.00
20-24 ft., 6-10 in. cal.	Price on application.

Q. rubra—RED OAK. Large, open tree, attractive for its smooth bark, straight branches and the Autumn coloring of its leaves. 50-75 ft.

Not B.&B. B.&B.

6-8 ft.	\$2.50
8-10 ft., 1¼-1½ in. cal.	3.50
10-12 ft., 1½-2 in. cal.	5.50
10-12 ft., 2-2½ in. cal.	7.50
10-12 ft., 2½-3 in. cal.	9.00
12-14 ft., 3-4 in. cal.	14.00
12-14 ft., 4-5 in. cal.	25.00

Salix—WILLOW

S. babylonica—WEEPING WILLOW. Particularly attractive near water; branches olive-green, slender and drooping. 30-40 ft.

6-8 ft.	\$1.50
8-10 ft.	2.25
10-12 ft., 1½-2 in. cal.	3.00

S. vitellina pendula—WEEPING GOLDEN WILLOW. Branches are yellow; a very attractive tree for specimen use. 25-30 ft.

6-8 ft.	\$1.50
10-12 ft., 1½-2 in. cal.	3.00

Sophora—SCHOLAR TREE

S. japonica—CHINESE SCHOLAR TREE (*Pagoda*). Foliage, dark green, glossy; clusters of creamy-white flowers in July. 15-20 ft.

Not B.&B. B.&B.

6-8 ft., 2-2½ in. cal.	\$5.00	\$6.00
------------------------	--------	--------

Sorbus—MOUNTAIN ASH

S. aucuparia—EUROPEAN MOUNTAIN ASH. Attractive white flowers in May, followed by showy clusters of bright red berries. 20-40 ft.

6-8 ft.	\$1.75
8-10 ft.	2.25

Styrax—SNOWBELL

S. japonica—JAPANESE SNOWBELL. Branches lined on underside, May-June, with fragrant, white, pendant, bell-like flowers. 10-12 ft.

6-7 ft.	\$2.00
---------	--------



The graceful Weeping Willow, with its drooping branches, gives a picturesque charm to any landscape; always attractive planted singly on the lawn or near water.

Barr's "Will Grow" Trees Are Regularly Root Pruned, Giving Superior Value.

**No Added Charge for Packing
—Except for Large Trees**

The prices given in this catalog include the cost of packing and delivery to freight or express office at Lancaster, Pa., except bare root trees over 2 inches in caliper which if called for or shipped by carload will be loaded free, but if packed for shipment by express or freight in less than carload lots add 10% to catalog prices.

We deliver full truck load lots free within a radius of 50 miles.

Tilia—LINDEN

Fast growing shade trees for lawn, park or avenue planting; straight growth and symmetrical outline.

T. americana—AMERICAN LINDEN. Stately tree with conical, dense head. Large, smooth, glossy, rich green leaves with yellow twigs; fragrant, yellow flowers. 60-80 ft.

10-12 ft., 1 1/2-2 in. cal.	\$4.00
10-12 ft., 2 -2 1/2 in. cal.	5.00
12-14 ft., 2 1/2-3 in. cal.	6.50
14-16 ft., 3 -4 in. cal.	9.00
16-20 ft., 6 -7 in. cal.	\$25.00-30.00
20-24 ft., 8-10 in. cal.	quoted on application.

T. vulgaris—EUROPEAN LINDEN. Fine, conical tree of dense and compact growth; red bark and deep green, pubescent leaves, smaller than those of the American Linden. 50-60 ft.

8-10 ft., 1 -1 1/2 in. cal.	\$3.00
10-12 ft., 2 -2 1/2 in. cal.	6.00
10-12 ft., 2 1/2-3 in. cal.	9.00

Ulmus—ELM

Graceful, majestic trees. Fine for avenues, parks and near homes. Prefer moist soil.

U. americana—AMERICAN ELM. Long, ascending branches, gradually spreading; drooping slender branchlets. 60-80 ft.

	Ea.	Per 10
6- 8 ft.	\$1.00	\$7.50
8-10 ft., 1 -1 1/2 in. cal.	1.50	13.00
10-12 ft., 1 1/2-2 in. cal.	2.00	17.50
12-14 ft., 2 -2 1/2 in. cal.	3.00	25.00
14-16 ft., 2 1/2-3 in. cal.	4.50	40.00
14-16 ft., 3 -4 in. cal.	6.00	
14-16 ft., 4 -5 in. cal.	12.00	
16-18 ft., 5 -6 in. cal.	20.00	

U. amer. vaseii—VASE ELM. Spreading type of Elm with large foliage and uniformity of shape; quick growing. 60-80 ft.

	Ea.	Per 10
10-12 ft., 1 1/4-1 1/2 in. cal.	\$1.75	
10-12 ft., 1 1/2-2 in. cal.	2.50	\$20.00
12-14 ft., 2 -2 1/2 in. cal.	3.50	30.00
12-14 ft., 2 1/2-3 in. cal.	5.00	
12-14 ft., 3 -4 in. cal.	6.50	
14-16 ft., 4 -5 in. cal.	12.00	

U. glabra—SCOTCH ELM. Broad, round-topped head, spreading branches; leaves very short stemmed, 3-6 in. long. 50-75 ft.

10-12 ft., 1 1/2-2 in. cal.	\$2.50
12-14 ft., 2-2 1/2 in. cal.	3.50
12-14 ft., 2 1/2-3 in. cal.	5.00
18-20 ft., 5 -6 in. cal.	20.00
18-20 ft., 6 -8 in. cal.	\$30.00-50.00



The fine symmetrical outline of the American Linden makes it one of the most desirable trees for lawn, park or avenue. It is fast growing and beautifully leaved. Rarely attacked by insects.

U. glabra camperdownii—CAMPERDOWN WEEPING ELM. Unique, drooping tree, making zigzag growth outward and downward, until leaves touch ground, forming complete arbor from graft 6 ft. above ground. 10-15 ft.

5-6 ft. stems, 5 yr. head.....\$5.00

U. molineii—MOLINE ELM. Pyramidal in growth; somewhat like a Lombardy Poplar; older trees becoming more spreading. 60-75 ft.

	Ea.	Per 10
6- 8 ft.	\$1.50	\$13.00
12-14 ft., 1 1/2-2 in. cal.	2.50	20.00
14-16 ft., 2 -2 1/2 in. cal.	3.50	30.00
14-16 ft., 2 1/2-3 in. cal.	5.00	
16-18 ft., 3 -4 in. cal.	6.50	
16-18 ft., 4 -5 in. cal.	12.00	
18-20 ft., 5 -6 in. cal.	20.00	
18-20 ft., 6 -8 in. cal.	\$30.00-50.00	

U. parvifolia—CHINESE ELM. Very rapid grower, yet hard wooded; graceful form; small leaved; drought resistant. Excellent lawn or street tree. 40-50 ft.

6- 8 ft.	\$1.50
8-10 ft.	2.00
10-12 ft., 2-2 1/2 in. cal.	3.50
14-16 ft., 5-6 in. cal.	20.00

IRON TREE GUARDS

Strongly made; 5 1/2 ft. high, 12 in. in diameter; uprights 1 x 1 1/8 in. iron. Four cross bands make this a very sturdy guard. \$4.50 ca. F. O. B., Lancaster, Pa.

We Advise Balling and Burlapping (B. & B.) All Trees Over 5 in. Cal.

Barr's Hardy, Ornamental Shrubs

Ornamental shrubs offer a constant change of scene that is particularly pleasing. By attention to the period of flowering a succession of varying bloom can be had from early Spring until late Autumn. In addition, the glorious autumn shades of foliage and brilliant berries of many varieties are strikingly beautiful.

"Will Grow" Shrubs are sturdy, well-rooted plants with bushy tops of numerous branches. They have been nurtured long enough in our nurseries to gain size and vigor, and will prove effective, dependable and desirable.

Abbreviations

Denotes Size at Maturity:—L, large, 8 ft. and over; M, medium, 5 to 8 ft.; S, small, 3 to 5 ft.; D, dwarf, 2 to 3 ft.

Denotes Varieties Thriving in Part Shade:—(*).



Who has not at some time or another enjoyed picking the chocolate-colored blossoms of the Sweetshrub (or Carolina Allspice) for their sweet fragrance?

AMELANCHIER canadensis—DOWNY SHADBLOW. *(L) Its numerous white flowers make this a conspicuous plant among the leafless trees of early spring. Maroon-purple berries, relished by birds.
1½-2 ft. \$0.50

ARALIA pentaphyllum (acanthopanax)—FIVE-LEAVED ANGELICA. *(L) Arching, spiny branches leaved to base; tolerates dust, smoke and shade.
2-3 ft. \$0.50 | 3-4 ft. \$0.65

A. spinosa—DEVILS-WALKINGSTICK. *(L) Stout, spiny stem, topped with umbrella-shaped crown of leaves. Large carrot-like head of many, small, white flowers in August, followed by showy black berries.
5-6 ft. \$0.60

ARONIA arbutifolia—RED CHOKEBERRY. (M) White, flowers in May; very attractive in Fall for red berries and reddish-yellow foliage.
2-3 ft. \$0.50 | 3-4 ft. \$0.60
4-5 ft. \$0.75

AZALEA calendulacea—FLAME AZALEA. *(S) Brilliant orange-yellow flowers in early spring.
18-24 in., heavy clumps, well branched, B. & B.... \$1.50
2-2½ ft., heavy clumps, well branched, B. & B.... 2.00

A. canescens—PIEDMONT AZALEA. *(S) Rosy-pink; fragrant; early.
18-24 in., heavy clumps, well-branched, B. & B.... \$1.50
2-2½ ft., heavy clumps, well-branched, B. & B.... 2.00

A. hybrida—HYBRID JAPANESE AZALEA. *(S) A wonderful hybrid with large orange-red flowers.
9-12 in., B. & B.... \$1.50 | 12-15 in., B. & B.... \$2.00

BERBERIS—BARBERRY. See Page 27.

BUDDLEIA magnifica—BUTTERFLY BUSH or SUMMER LILAC. (S) Spikes of lavender flowers, July to autumn.

Potted plants.....\$0.30 | 2-yr. plants.....\$0.50

CALLICARPA purpurea—CHINESE BEAUTY FRUIT. (S) Lilac-violet berries crowd branches in September.
18-24 in. \$0.35

CALYCANTHUS floridus—SWEETSHRUB. *(S) Reddish-brown, fragrant flowers, spring and summer.
2-3 ft. \$0.50 | 3-4 ft. \$0.60

CARYOPTERIS incana—BLUEBEARD. (D) Violet-blue flower clusters in September.
15-18 in. 2-yr. pot plants. \$0.40

CLETHRA alnifolia—SUMMERSWEET. *(S) Fragrant, white flower spikes terminating branches, July.
1½-2 ft. \$0.50 | 2-3 ft. \$0.70

CORNUS alba (sibirica)—TARTARIAN DOGWOOD. (L) Brilliant red twigs; creamy flowers May or June; fruit blue.
2-3 ft. \$0.35 | 3-4 ft. \$0.50

C. stolonifera lutea—GOLDENTWIG DOGWOOD. *(M) Bright yellow bark; flowers creamy.
2-3 ft. \$0.35 | 3-4 ft. \$0.50

COTONEASTER divaricata—SPREADING COTONEASTER. *(S) Arching branches loaded with bright red fruit; leaves brilliant in autumn.

3-4 ft., B. & B. \$1.25

C. francheti—FRANCHET COTONEASTER. *(S) Semi-evergreen, with gracefully arching branches; fruit orange-red persisting greater part of Winter.

2-3 ft. B. & B. \$1.25

CYDONIA japonica—FLOWERING QUINCE. (S) Masses of scarlet flowers hug leafless branches in April.
2-3 ft. \$0.50 | 3-4 ft. \$0.60

DEUTZIA gracilis—SLENDER DEUTZIA. *(D) White flowers in graceful, upright clusters in May.
15-18 in. \$0.30 | 1½-2 ft. \$0.50

D. gracilis rosea—PINK SLENDER DEUTZIA. *(D) Pink form of preceding.
1½-2 ft. \$0.50

D. scabra candidissima—SNOWFLAKE DEUTZIA. *(M). Erect clusters of purest white, double flowers, borne in profusion in June.
2-3 ft. \$0.30 | 3-4 ft. \$0.35

D. scabra crenata—DOUBLE PINK DEUTZIA. (M) Double, light pink flowers, June.
3-4 ft. \$0.30 | 4-5 ft. \$0.35

EUONYMUS alatus—WINGED EUONYMUS. *(M) A striking plant in the Fall, when its foliage is a brilliant rose. Corky-winged branches; small, purple fruits. Best used as a specimen.
2-3 ft. \$0.60 | 3-4 ft. \$0.85
4-5 ft., B. & B. \$2.00

E. americanus—BROOK EUONYMUS. *(L) Conspicuous in Fall for pink capsules which split open, revealing orange berries.
3-4 ft. \$0.70

Barr's Shrubs are carefully hand-dug as each order is filled. So-called "bargain" shrubs dug in large quantities cheaply by machinery, which cannot secure the entire root-system, and kept in cold storage where growth is retarded and vitality lost, cannot give the same satisfactory results. Save time and money with Barr's "Will Grow" plants with full vitality and entire root systems insured by coming just fresh out of the ground.

Barr's "Will Grow" Shrubs Have Heavy Root Systems and Bushy Tops, Many Branched

EXOCHORDA grandiflora—PEARLBUSH. (L) Pearl-like, dazzling white, globular flowers in six to ten flowered racemes, April-May. Useful in specimen planting.
2-3 ft.\$0.45 | 3-4 ft.\$0.60

FORSYTHIA intermedia spectabilis—SHOWY BORDER FORSYTHIA. *(M) Showiest of Golden Bells; opens late enough to escape injury by frost. Most profuse blooming, large flowers, crowded on branches, sometimes five or six petals.
2-3 ft.\$0.35 | 3-4 ft.\$0.50

F. suspensa—WEEPING FORSYTHIA. *(M) Long drooping branches; bright yellow flowers, very early.
2-3 ft.\$0.35 | 3-4 ft.\$0.50
4-5 ft., bushy plants.\$0.60

F. fortunei—FORTUNE FORSYTHIA. *(M) Upright branches, covered with rich yellow flowers.
3-4 ft.\$0.50 | 4-5 ft.\$0.60
5-6 ft., bushy plants.\$0.75

HAMAMELIS virginiana—WITCH-HAZEL. *(L) Yellow flowers as late as October and November. Excellent as a background shrub planted in clumps.
3-4 ft.\$0.55

HIBISCUS syriacus—SHRUB ALTHEA or ROSE OF SHARON. (L) Hollyhock-like flowers in August-September. Red, blue, white or pink. State color desired.
2-3 ft.\$0.40 | 3-4 ft.\$0.50
4-5 ft.\$0.75

HYDRANGEA arborescens grand—SNOWHILL. *(S) Masses of pure white flowers like big snow-balls, June-September.
2-3 ft.\$0.45 | 3-4 ft.\$0.60

H. opuloides acuminata—FRENCH HYDRANGEA. (D) Blue or pink flowers in immense clusters. For blue flowers plant in acid soil. Strong pot grown plants \$1.00.
2-3 ft.\$0.65 | 3-4 ft.\$1.00



One of the best and most showy of the late flowering shrubs is the Peegee Hydrangea with its immense heads of white flowers turning bronze as frosts near.

H. paniculata grand—PEEGEE HYDRANGEA. (M) Immense cone-shaped heads of white flowers turning pink and bronze, September-October.
2-3 ft.\$0.45 | 3-4 ft.\$0.60

H. quercifolia—OAKLEAF HYDRANGEA. *(S) Leaves oak-like, beautifully colored in the Fall. Flowers pinkish-white, turning purplish, borne in narrow upright clusters in June. Will thrive in part shade.
2-3 ft.\$0.65 | 3-4 ft.\$1.00

Barberry and Privet—Leading Hedge Plants

When planning a Hedge to enjoy its picturesque effect instead of the unsightliness of the ordinary artificial fence, one naturally thinks of Barberry or California Privet.

Estimate 18 inches as the distance between plants for a Barberry hedge, 6 inches for California Privet, the latter to be cut to within 6 inches of the ground immediately after planting.

Berberis thunbergii. **Japanese Barberry**. The best "all-purpose" plant. In Fall has brilliantly colored foliage and many scarlet berries.

	Each	10	100
9-12 in.	\$0.12	\$1.00	\$ 8.00
12-18 in.16	1.40	12.00
1½-2 ft., bushy plants.22	2.00	15.00



A hedge of Japanese Barberry, with its brilliant foliage and bright red berries, is one of the most enjoyable sights imaginable in the Fall. Popularly used in Foundation and Lawn Planting.

Barberry and Privet can be used to advantage planted in groups and as specimens as well as for Hedges.

Berberis thunbergii atropurpurea. **Red-Leaved Japanese Barberry**. Foliage rich bronze-red spring to autumn; should have sunny situation.

	Each	10	100
15 -18 in., heavy plants.	\$0.30	\$2.50	\$20.00
18 -24 in., heavy plants.40	3.50	30.00
2 -2½ ft., heavy plants.50	4.50	40.00

B. thun. pluriflora erecta—**Truehedge Columnberry**. (New.) See Page 4.

Ligustrum ibota. **Ibota Privet**.

3-4 ft.	\$0.30	\$2.00	\$15.00
4-5 ft.40	3.00	20.00
5-6 ft.75	6.00	

Ligustrum ibota regelianum. **Regel Privet**.

2-3 ft.	\$0.35	\$3.00	\$25.00
3-4 ft.45	4.00	35.00
4-5 ft.60	5.00	45.00
5-6 ft., heavy plants.75	6.00	

Ligustrum ovalifolium. **California Privet**. (The most generally used Hedge Plant.)

	10	100	1000
18-24 in.	\$0.45	\$3.00	\$25.00
2-3 ft., 2-3 yr. old.50	4.00	30.00

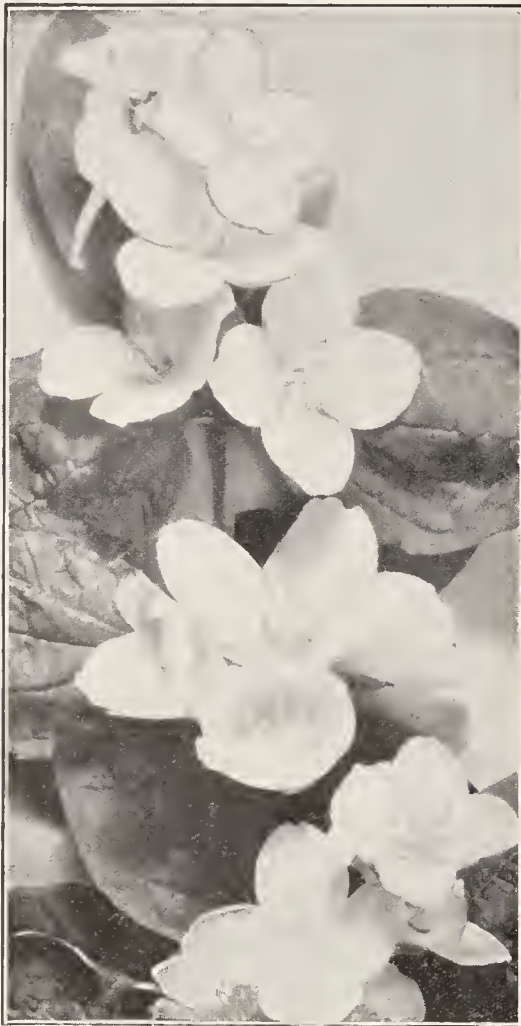
Ligustrum oval. variegatum. **Golden California Privet**.

	Each	10
18-24 in.	\$0.40	\$3.00

25 OR MORE HEDGE PLANTS AT 100 RATES; 250 OR MORE AT 1000 RATES

Ornamental Shrubs

❁ B. F. BARR NURSERIES, LANCASTER, PA. ❁



No shrub group or border would be complete without one or more Mock Orange bushes. The sweet fragrance of their flowers fills the air in May and June.

- JASMINIUM nudiflorum**—WINTER JASMINE. (S) Golden yellow flowers before the leaves. Very first Shrub to bloom in the spring.
1½-2 ft.....\$0.50
- KERRIA japonica fl. pl. (Corchorus)**—KERRIA. *(S) June to September profusion of rich-yellow flowers with numerous stamens. green branches make Winter show.
1½-2 ft.....\$0.75
- KOLKWITZIA amabilis**—BEAUTY BUSH. (S) Fountain-like mass of pink bloom in May. Thrives best in full sunlight.
3-4 ft.....\$0.60
- LIGUSTRUM**—PRIVET. See Page 27.
- LONICERA fragrantissima**—WINTER HONEYSUCKLE. (M) Small, creamy-white, very fragrant flowers in March; red fruits.
3-4 ft.....\$0.40 | 4-5 ft.....\$0.50
- L. morrowi**—MORROW HONEYSUCKLE. (M) White flowers May and June; translucent, blood-red berries, July-August.
3-4 ft.....\$0.50 | 4-5 ft.....\$0.60
- L. tatarica rosea**—TATARIAN HONEYSUCKLE. *(L) Pink flowers in May; light red berries in abundance.
2-3 ft.....\$0.40 | 3-4 ft.....\$0.60
- L. lat. rubra**—RED TATARIAN HONEYSUCKLE. (M) Bright red flowers. May-June; attractive, red fruit.
2-3 ft.....\$0.40 | 3-4 ft.....\$0.50

- MYRICA carolinensis (cerifera)**—BAYBERRY. (D) Gray berries attractive amidst dark green, glossy leaves.
1½-2 ft.....\$0.70
- PHILADELPHUS coronarius**—SWEET MOCK ORANGE. *(M) Pure white, delightfully fragrant flowers in abundance. May-June.
3-4 ft.....\$0.40 | 4-5 ft.....\$0.50
- P. grandiflorus**—BIG SCENTLESS MOCK ORANGE. *(M) Flowers four-cornered, two inches across, June; scentless. Most vigorous of the species.
3-4 ft.....\$0.40 | 4-5 ft.....\$0.50
- P. lemoinei**—LEMOINE MOCK ORANGE. *(S) Flowers smaller, fragrant in great profusion. Dwarf, graceful habit. Beautifully symmetrical plant.
2-3 ft.....\$0.40 | 3-4 ft.....\$0.50
- P. virginalis**—VIRGINAL MOCK ORANGE. (M) Large, sweet, double, pure white flowers in May and June and intervals throughout summer. Very striking.
3-4 ft.....\$0.50 | 4-5 ft.....\$0.60
- PHYSOCARPUS opulifolius**—NINE BARK. *(L) Pinkish or greenish-white flowers in June in clusters, followed by reddish capsules, bark peels off in strips.
3-4 ft.....\$0.40 | 4-5 ft.....\$0.50
- PRUNUS glandulosa alba fl. pl.**—DOUBLE WHITE FLOWERING ALMOND. (M) White, fully double flowers crowded on the bare branches in early spring.
2-3 ft.....\$0.75
- P. gland. rosea fl. pl.**—DOUBLE PINK FLOWERING ALMOND. (M) Pink form of preceding.
2-3 ft.....\$0.75
- RHODOTYPOS kerrioides**—JETBEAD. *(S) White flowers in May followed by conspicuous, black bead-like fruits.
3-4 ft.....\$0.50 | 4-5 ft.....\$0.60
- RHUS cotinus**—SMOKE TREE (Purple Fringe). (L) Enveloped by large, plummy masses of green or purple flower stems in mid-summer, giving a smoky appearance.
3-4 ft.....\$0.60 | 4-5 ft.....\$0.75
- ROBINIA hispida**—ROSE ACACIA. (S) Drooping clusters of rose-pink, pea-shaped flowers, May and June.
3-4 ft.....\$0.60
- ROSA hugonis**—HUGONIS ROSE. (S) Long garlands of dainty, yellow flowers in May, followed by translucent, red fruits.
2-3 ft., 3 yr.....\$0.75
- R. persiana**—PERSIAN YELLOW ROSE. (S) Double, deep golden yellow flowers late Spring or early Summer.
2-3 ft., 2 yr.....\$0.60
- R. rugosa**—JAPANESE ROSE. (S) Large, white or red flowers, followed by handsome scarlet-crimson fruits.
2-3 ft., 3 yr.....\$0.60
- R. rugosa hybrida**—HYBRID JAPANESE ROSE, F. J. GROOTENDORST. (S) Bright crimson flowers, early Spring to frost.
2-3 ft., 3 yr.....\$0.60
- R. rugosa hybrida**—HYBRID JAPANESE ROSE, AGNES. (S) Yellow flowers, sweetly fragrant and double.
2-3 ft., 3 yr.....\$0.75

B. & B. FOR LATE PLANTING

After Shrubs have started growth in the Spring (about May 15th), planting can still be continued if plants are dug with ball of earth and burlapped. For this extra service there is an additional charge of 20c. per plant, unless quoted B. & B.

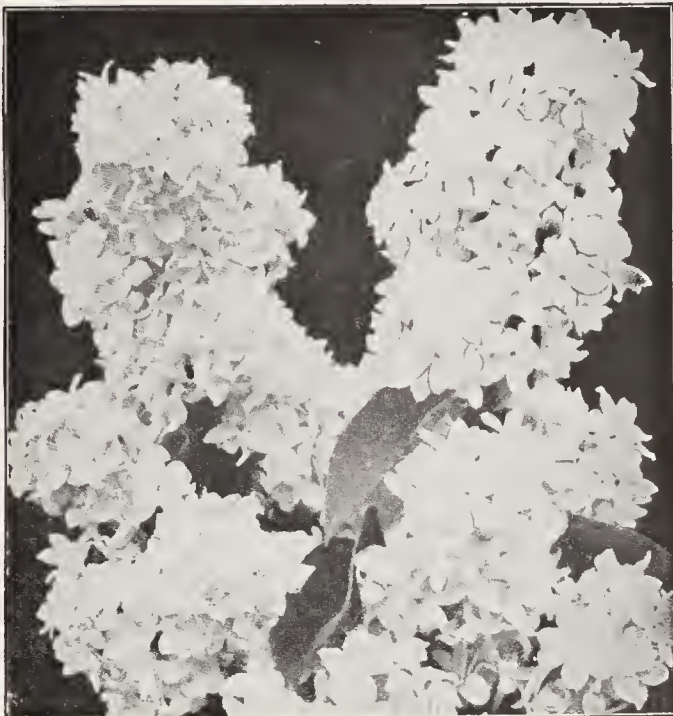
Barr's "Will Grow" Shrubs Have Heavy Root Systems and Bushy Tops, Many Branched

HOW TO PLANT SHRUBS

Cut the tops back about one-half or one-third before planting. Be careful to have roots exposed to air or sun as little as possible at any time.

The important point in planting is to have the hole large enough to accommodate the roots without crowding, and to get the soil well worked in among the roots. Space the larger growing Shrubs 4-5 ft. apart, medium growers, 3-4 ft., low growers, 2-3 ft.

Always water abundantly and apply a mulch. A basin-shaped depression should remain around each plant to hold the water, at least the first summer.



The Lilac is one of the old favorites, unexcelled for fragrance and beauty. Colorful in the shrubbery border and frequently used for hedges or screens.

- SPIRAEA arguta**—GARLAND SPIREA. (S) Earliest to bloom; profusion of white flowers on slender, drooping branches giving appearance of a snowbank; feathery foliage. Dwarf habit.
2-3 ft.....\$0.50 | 3-4 ft.....\$0.60
- S. billardi**—BILLIARD SPIREA. *(S) Bright rose flowers in dense plummy spikes, July-August.
2-3 ft.....\$0.40 | 3-4 ft.....\$0.50
- S. bumalda anthony waterer**—ANTHONY WATERER SPIREA. (D) Rosy-crimson flowers in flat-topped terminal clusters, June to frost. Good plant for flowering hedge. Very dwarf.
15-18 in.....\$0.40 | 1½-2 ft.....\$0.50
- S. froebeli**—FROEBEL SPIREA. (D) Like preceding except earlier and taller.
2-3 ft.....\$0.50
- S. prunifolia fl. pl.**—BRIDAL-WREATH. (M) White, fully double, small button-like flowers, massed on slender, upright branches, April-May.
2-3 ft.....\$0.40 | 3-4 ft.....\$0.60
- S. thunbergi**—THUNBERG SPIREA. (D) Profusion of small, white flowers on arching branches; similar to *S. arguta*, but later. Very dwarf.
2-3 ft.....\$0.50
- S. trichocarpa**—KOREAN SPIREA. *(M) Graceful arching form like Van Houtte Spirea, but the profusely borne flowers, distinctly "eyed" or marked at the center, are larger and two weeks later.
3-4 ft.....\$0.50
- S. van houttei**—VAN HOUTTE SPIREA. *(M) Gracefully, arching branches wreathed in May-June with a profusion of pure white flowers; a fountain of bloom. Most extensively planted.
2-3 ft.....\$0.20 | 3-4 ft.....\$0.30
4-5 ft.....\$0.40
- STEPHANANDRA flexuosa**—CUTLEAF STEPHAN-ANDRA. *(S) Graceful, spreading shrub, small white flowers in clusters, June-July; dainty leaves, brilliant red in autumn. Grows in part shade.
2-3 ft.....\$0.40 | 3-4 ft.....\$0.50
- SYMPHORICARPOS racemosus**—SNOWBERRY. *(S) Showy, waxy, white berries autumn and winter.
3-4 ft.....\$0.40 | 4-5 ft.....\$0.50
- S. vulgaris**—CORALBERRY. *(S) Purplish-red berries in clusters lining long, slender branches autumn and winter. Dwarf habit.
2-3 ft.....\$0.40 | 3-4 ft.....\$0.50
- SYRINGA chinensis (rothomagensis)**—CHINESE LILAC. (L) Fragrant, reddish-purple flowers in large, open heads in May.
3-4 ft.....\$0.50 | 4-5 ft.....\$0.60
- S. persica**—PERSIAN LILAC. (M) Lavender flowers in loose panicles on drooping branches, May-June.
4-5 ft.....\$0.75 | 5-6 ft.....\$1.00
- S. vulgaris**—COMMON LILAC. (L) Fragrant, purplish flowers in May in large, double clusters.
2-3 ft.....\$0.40
- S. vulg. alba**—WHITE LILAC. (L) White form of preceding.
2-3 ft.....\$0.40

Named Varieties of French Lilacs

- Alphonse Lavallee, double, lavender.
- Charles Joly, semi-double, red mauve.
- Charles X, single, reddish purple.
- Ludwig Spaeth, single, magenta purple.
- Marie Legrage, single, white.
- Michel Buchner, double, pinkish lilac.
- Mme. Lemoine, double, white.
- President Grey, double, blue.
- Rubra de Marly, single, reddish purple.
- William Robinson, double, pinkish violet.

Prices of Above Varieties Your Selection

	Each	Per 10
1½-2 ft.....	\$0.35	\$3.00
2-3 ft.....	.55	4.50
3-4 ft. bushy plants.....	.85	7.50
4-5 ft. extra bushy specimens.....	1.00	9.00

(B. & B., 25c. additional)

TAMARIX africana—AFRICAN TAMARIX. (L) Mass of airy, pink flowers, April-May; fine, graceful foliage.
3-4 ft.....\$0.40 | 4-5 ft.....\$0.50

SHRUBS BY PARCEL POST

Shrubs up to 3 ft., not B. & B., can be sent by parcel post, provided 15c. is added for special packing and postage on first Shrub, 10c. for each additional Shrub under ten, or 5c. for each additional plant totaling ten or more.

For Privet add 20% of value to cover packing and postage—25c. minimum charge.

Barr's "Will Grow" Shrubs are freshly dug for each order—have more vigor.



Like snowballs are the large, globular heads of pure-white flowers borne in profusion by the Common Snowball, or Guelder Rose. It is one of the most attractive of the Spring-flowering plants. Valuable as a cut flower, too.

- VIBURNUM carlesi**—FRAGRANT VIBURNUM. (S) Lovely pink, fragrant flowers in dense clusters 2-3 in. in diameter, early April; blue-black berries.
15-18 in.....\$1.25 | 1½-2 ft. B & B.....\$1.50
- V. cassinoides**—WITHE-ROD. (M) Creamy-white flowers in flat heads, June; drooping clusters dark blue fruit and purplish orange-red leaves in fall.
3-4 ft.....\$0.60
- V. dentatum**—ARROWWOOD. *(L) White flower heads, May-June; dark blue berries, bronze leaves in autumn.
3-4 ft.....\$0.50 | 4-5 ft.....\$0.60
- V. dilatatum**—LINDEN VIBURNUM. (M) Attractive, spreading shrub, creamy-white flowers; abundant, small, red fruits September, long persisting.
3-4 ft.....\$0.75 | 4-5 ft.....\$1.00
- V. lantana**—WAYFARING-TREE. (L) Flowers white in flat-topped clusters, June; fruit clusters bright red in summer, turning black later.
3-4 ft.....\$0.50 | 4-5 ft.....\$0.60
- V. lentago**—NANNYBERRY. *(L) Fragrant, white flowers May-June in clusters 4-5 in. across; fruit blue-black, edible.
2-3 ft.....\$0.40 | 3-4 ft.....\$0.50
- V. opulus**—EUROPEAN CRANBERRY BUSH (High Bush Cranberry). (L) Showy white flower heads, May-June; scarlet berries in the Fall.
2-3 ft.....\$0.40 | 3-4 ft.....\$0.50
4-5 ft.....\$0.55
- V. op. sterile**—SNOWBALL (Guelder Rose). (L) Large, snowball-like flowers, May-June.
3-4 ft.....\$0.50 | 4-5 ft.....\$0.60
- V. tomentosum**—DOUBLEFILE VIBURNUM. (M) Profuse, pure white flowers in large flattened clusters, June.
3-4 ft.....\$0.50 | 4-5 ft.....\$0.65

- V. tom. plicatum**—JAPANESE SNOWBALL. (M) Large, round-heads, snowy white flowers, in abundance in June; dark green, crimped foliage.
2-3 ft.....\$0.60 | 3-4 ft.....\$0.75
- VITEX macrophyllus**—CHASTE-TREE. (M) Very graceful, attractive plant; pretty lavender blue flower spikes 6 to 10 inches long, July to frost.
1½-2 ft.....\$0.50 | 3-4 ft.....\$0.60
- WEIGELA amabilis**—ROSE WEIGELA. (S) Showy light pink, tubular flowers in profusion, May-June.
2-3 ft.....\$0.40 | 3-4 ft.....\$0.50
4-5 ft.....\$0.60
- W. Eva Rathke**—HYBRID CARMINE WEIGELA. (M) Fragrant, carmine, tubular flowers, June-July; free bloomer and very popular.
2-3 ft.....\$0.60
- W. floribunda**—CRIMSON WEIGELA. Tubular dark crimson, fragrant flowers, June.
3-4 ft.....\$0.50 | 4-5 ft.....\$0.60

HEAVY, BUSHY PLANTS SUPPLIED

Bushiness is better indication of value than height alone. Barr's "Will Grow" Shrubs are especially well branched, heavy, bushy plants.

Barr's has priced its certified "Will Grow" plants so low that ordinary plants are dear in comparison. It pays to buy the immediate effect produced by Barr's "Will Grow" plants—you have no waiting for results.



The Weigela is always an old garden favorite with good foliage and flowers in abundance. Useful in foundation plantings and in the shrub border.

Barr's "Will Grow" Shrubs Have Heavy Root Systems and Bushy Tops, Many Branched

Barr's Climbing Vines and Creepers

Vines are very useful plants, giving grace and beauty by relieving bare expanse of walls, softening rigid lines, furnishing privacy and decoration for porches. Several varieties will cover banks where other plants would not grow.

* Indicates will thrive in shade.

AMPELOPSIS tricuspidata (veitchii). *Boston or Japanese Ivy.* (*) Rapid growing, with large, handsome, green leaves, three lobed, turning brilliant orange and scarlet in the Fall. Clusters of dark blue berries. Clings firmly by disc attachments. For walls and screen effects. 2 yr. potted plants, 40c. ea.; \$4.00 per doz.

ARISTOLOCHIA sipho. *Dutchman's Pipe.* (*) Excellent for porches, its large, tropical-appearing leaves making dense shade. Peculiar brownish flowers late May resembling pipes. Rapid growing twiner for lattices, verandas, screen effects. 4 in. pot plants, \$1.00 ea.

BIGNONIA radicans. *Trumpet Creeper.* Large, brilliant orange-scarlet, trumpet-shaped flowers. July and August. Climbs by means of aerial rootlets. For walls, trellises and arbors, banks and slopes. 2 yr. potted plants, 40c. ea.; \$4.00 per doz.

CELASTRUS scandens. *American Bittersweet.* (*) Glossy leaves turning bright yellow in autumn. Brilliant fruit in big clusters of bright orange-colored pods, splitting open and disclosing scarlet seeds. Shrubby vine of twining habit for covering trellis, trees, rocks, slopes and walls. 2 yr. field grown plants, 35c. ea.; \$3.00 per doz.

CLEMATIS

Among the most beautiful of the hardy climbing vines is the Clematis, unexcelled for its brilliant colors. Thrives best in deep, moist soil.

Large Flowering Varieties

The hybrid named varieties are the large-flowering sorts popular for pillars or porch climbers. Bloom July to September. Plant crowns 6 inches below surface, with roots straight down. Because of the difficulty of getting Clematis started, free replacement cannot be allowed.

C. jackmani. *Jackman Clematis.* Large, rich, velvety purple flowers.

C. henryi. *Henry Clematis.* Creamy white.

C. Mme. Edouard Andre. *Madame Andre Clematis.* Carmine violet.

C. ramona. *Ramona Clematis.* Clear sky-blue.

PRICE. Any of above Large-flowering Clematis in strong, 2 yr. potted plants, 75c. ea.

Small Flowering Varieties

C. paniculata. *Sweet Autumn Clematis* (Japanese Clematis). Becomes entirely covered with enormous masses of star-shaped, white flowers, deliciously fragrant, late summer to frost. Used on porches and over doorways; also for covering graves or sloping banks. 2 yr. potted plants, 35c. ea.; \$3.50 per doz.

C. texensis (coccinea). *Scarlet Clematis.* Low, twining plant sometimes reaching 6 ft. Flowers bell-shaped, nodding, crimson-scarlet, and very beautiful. 2 yr. potted plants, 50c. ea.; \$5.00 per doz.

EUONYMUS radicans. *Wintercreeper.* (Evergreen Bittersweet). Self-clinging, dense-growing; dull-green, roundish leaves with whitish veins. Excellent for low walls, banks and slopes. Heavy 2 yr. plants, 40c. ea.; \$4.00 per doz.

E. rad. variegata. *Variiegated Wintercreeper.* Similar to above except leaves are marked yellow. 2 yr. plants, 40c. ea.; \$4.00 per doz.

E. rad. vegetus. *Big-Leaf Wintercreeper.* Low, trailing evergreen vine with aerial rootlets for clinging. Showy red fruits in great profusion lasting long time. Heavy 2 yr. plants, 35c. ea.; \$3.50 per doz.; 3 yr. plants, 75c. ea.; \$7.50 per doz.

HEDERA helix. *English Ivy.* (*) Evergreen root-climber; excellent for covering walls in partially shaded places; also used in window-boxes, vases and as a ground cover under trees; also among Evergreen and Shrub plantings. Leaves beautiful, waxy, dark green, veined white.

H. cuspidata minor (gracilis). *Small-Leaf English Ivy.* (*) Leaves rather small with broad short lobes.

PRICE. Any of above English Ivy, 2½ in. pots, 10c. ea.; \$1.00 per doz.; 4 in. pots, 30c. ea.; \$3.00 per doz.

LONICERA japonica halliana. *Hall Japanese Climbing Honeysuckle.* (*) Flowers open white changing to yellow continuing midsummer to frost. Very fragrant. Leaves almost evergreen. Valuable for covering banks; also useful for porches, fences, trellises and pergolas and screen effects. 4 in. pots, 35c. ea.; \$3.50 per doz.

LYCIUM chinense. *Matrimony Vine.* (Box-Thorn). The bright purple, star-shaped flowers June to September are followed by brilliant orange-red berries almost 1 inch long. Good on banks, walls, fences, trellises or arbors; most beautiful pendent from top of walls. 2 yr. plants, 45c. ea.; \$4.50 per doz.

POLYGONUM auberti. *China Fleecevine* (Silver Lace Vine). Will climb to 25 ft. or more and become entirely covered with a great feathery spray of white flowers, August-September. Good on lattices. Strong plants, 60c. ea.; \$6.00 per doz.

WISTERIA sinensis. *Chinese Wisteria.* Showy, large, blue-violet flowers in dense, pendulous clusters, sometimes a foot long. May.

W. sin. alba. *White Wisteria.* White form of the preceding.

PRICE. Heavy, field grown, grafted plants, 3 yr., \$1.00 ea.; 2 yr., 75c. ea. Since Wisterias grown from seed often will not bloom, ours are grafted plants to assure bloom.

FOLLOWING THE LEAD OF WISE BUYERS

Big buyers for nursery stock, including Governmental, State and Municipal agencies, were in the market during 1935 and again in 1936 taking large quantities of plants while prices were at their lowest.

Small buyers who delay may soon find an exhaustion of stocks and higher prices. Be wise. Follow the lead of the wise purchasing agents and provide for your plant requirements before a serious shortage with price advances materializes.

With real shortages developing you'll find real bargains in this catalog.

Vines are Useful in Adding Beauty and Charm to the Home Grounds.

Barr's "Pot-Perfected" Roses

Highly Vigorous Plants With Two or More Strong Canes, and Ready to Bloom Soon After You Plant Them

In spring planting the best results with Roses, experience teaches, is with Potted Plants. Barr's "Will Grow" Field-Grown Roses have been started in pots where they have had opportunity to develop extra vigor and root systems full of vitality. Will start blooming soon after you plant them. *Ready to set out after danger from frost is over.*

What Are Pot-Perfected Rose Plants?

When the plant-expert wants to develop a strongly rooted, extra-vigorous plant he puts it into a pot to encourage and control root-formation. This unique process is used in growing Barr's Hardy Rose Plants.

Such plants must exceed in vigor the dormant, dried-out "bargain" plants from cold storage where vitality is lost and growth often lastingly checked.

Barr's Hardy Roses are largest grade known in

the trade, outside of exhausted greenhouse plants often cheaply sold. Each has two to three or more heavy canes properly cut back; the roots carefully "de-eyed" to prevent wild shoots. We guarantee these hardy Roses to start blooming soon after you plant them.

It is not necessary to plant them out so early as to run chances of injury by freezing and for the late planter these are sure to succeed.

HYBRID TEA ROSES—(Monthly or Everblooming Varieties)



The Columbia Rose is one of the most popular of the Hybrid Teas. Of vigorous habit and exceptionally free-blooming.

Alezane. See back cover page.

Amelia Earhart. See Page 5.

Autumn. Burnt orange outside, buff and gold, streaked with red, inside; double; dark, glossy foliage. 90c. each; \$9.00 per doz.

Better Times. See back cover page.

Betty Uprichard. Carmine buds opening to salmon shade. Fine, long petals holding color in all sorts of weather.

Carillon. See back cover page.

Carrie Jacobs Bond. See Page 5.

Charles P. Kilham. Blazing scarlet-orange at first, opening bright orange-pink with fiery centers.

See Page 5 and Back Cover Page for New Rose Creations We are Offering This Year.

Columbia. Bright pink, deepening as it opens; fragrant, large flowers.

Countess Vandal. See Page 5.

Crimson Glory. See Page 5.

Edith Nellie Perkins. Long pointed, rich orange-pink buds, opening salmon-pink with golden underglow; very fragrant.

Editor McFarland. Pink, slightly suffused with yellow; semi-double; slightly fragrant. Profuse bloomer; vigorous. \$1.00 each; \$10.00 per doz.

Etoile de Hollande. Considered best red variety, with brilliant scarlet, fragrant flowers of large size.

Feu Pernet-Ducher. See Page 5.

Gloaming. See back cover page.

Golden Dawn. Bud rich straw-yellow, flushed old rose; flower double, well formed, fragrant, sunflower-yellow passing to lemon yellow. \$1.00 each; \$10.00 per doz.

"Will Grow" Rose Bushes Are Extra Large, 2 yr. Plants

Barr's "Will Grow" Rose Plants are the largest grade in the trade and known as 2 yr., No. 1. They have two to three or more heavy canes properly cut back when potted and have been "de-eyed" to prevent wild growth. The medium grades commonly sold for a price have fewer and lighter canes.

Being low-grafted, "Will Grow" Roses are stronger rooted, hardier and more profuse bloomers than "own-root" plants. For permanence, too, grafted plants are the better. See Planting Directions on Page 33.

Due to the size and weight of these plants, shipment by parcel post is not recommended, except when less than five plants are ordered. If wanted by parcel post prepaid, see Parcel Post charges on Page 33.

Potted Roses, Like B. & B. Evergreens, Have Soil-Encased Roots, Making for Stronger Growth

Governor Alfred E. Smith. (Patented.) Salmon and gold with a deeper tone on outside of petals. Large rounded flower, sweetly fragrant. \$1.25 each; \$12.50 per doz.

J. C. Thornton. Scarlet red; most prolific, never out of bloom; without equal for color effect. 95c. each; \$9.50 per doz.

Joanna Hill. Indian-yellow center surrounded by gold buff petals; very double, long lasting, moderately fragrant flowers.

Kaiserin Auguste Viktoria. Creamy-white, large blooms on long stems; fragrant.

Lady Forteviot. Bright saffron-yellow, flushed with carmine-red and orange.

Margaret McGredy. Brilliant red petals on hinges of deep gold; buds upright; constant bloomer. Foliage resistant to black-spot and mildew.

Mary Hart. (Patented.) Maroon-red. A sport of the celebrated *Talisman*. \$1.00 each; \$10.00 per doz.

Matador. See back cover page.

Mme. Jules Bouche. Full, pearly white, camellia-like flower, tinged blush. Most dependable.

Miss Rowena Thom. Brilliant satiny-pink, old gold center, large, impressive buds and blooms.

Mrs. Henry Morse. Bright pink with silver shadings inside and underlying yellow glow; large, double, fragrant flowers.

Mrs. Pierre S. du Pont. Most continuous blooming yellow. Buds long pointed, rich reddish gold, almost orange in depths of petals. \$1.00 each; \$10.00 per doz.

Nigrette. See Page 5.

President Hoover. Riot of contrasting shades of maroon, orange and gold; continuous bloomer; exquisitely formed buds; strong stems.

Radiance. Beautiful, light silvery-pink to salmon pink. Most dependable pink; large and fragrant.

Red Radiance. Beautiful deep-red form of the Radiance.

Rev. F. Page-Roberts. Long, pointed buds of coppery-red, opening to golden-yellow of remarkable beauty; full, double, fragrant flower.

Rochester. (Patented.) Golden yellow with carmine markings. Foliage disease-resistant; growth vigorous. Always in bloom. \$1.25 each; \$12.50 per doz.

Roslyn. Full golden-yellow bloom deeper in center with orange splashings on back of petals. Very free bloomer. Lustrous foliage.

Souvenir. (Patented.) A golden *Talisman* of great beauty, with all the qualities of *Talisman*. \$1.00 each; \$10.00 per doz.

Souvenir de Claudius Pernet. Beautiful, pure sunflower-yellow, deeper in center; an extraordinary yellow rose.

Souvenir de Mme. C. Chambard. Outer petals rich rose-red; inner petals flashy deep rose-pink, with golden glow at center. Large, fragrant. \$1.00 each; \$10.00 per doz.

Talisman. Brilliant orange-red buds, opening a glowing golden yellow, tinted copper red and orange-rose; truly a gorgeous rose; large and fragrant.

Token. See Page 5.



The White Killarney Rose—one of the really good, pure white garden roses. A white sport of the original Killarney.

Ville de Paris. Buds of buttercup yellow opening into fadeless, double flowers of Radiance type.

White Briareliff. See back cover page.

White Killarney. Pure white double flowers, borne in great abundance.

Willowmere. Long coral red buds, developing into large flowers of a rich shrimp-pink, shaded yellow in the center.

PRICES. Any of the foregoing Monthly Blooming Roses in strong 2-yr. field-grown potted plants (except where noted), 75c. ea.; 6 or more, 65c. ea.; 25 or more, 60c. ea.

PARCEL POST CHARGES

If wanted by parcel post add 15c. for the first plant and 5c. for each additional plant, as these extra-large plants will weigh three to four pounds each packed for shipment.

CULTURE OF ROSES

While roses delight in a sunny exposure, a location giving some shade during the heat of the day will be ideal. Any ordinary soil, fertilized with well-rotted stable manure or bone meal, is adapted to Rose growing, providing there is good drainage, as Roses object to wet feet. The soil should be made friable to a depth of eighteen inches and enriched with bone meal and manure.

Set the Hybrid Teas 12-15 inches and Hybrid Perpetuals 2 feet apart, planting so the graft will be beneath the surface. The soil immediately about the roots should be compact. A top dressing of bone meal or well-rotted manure twice a month during the growing season will improve both flowers and fragrance.

Some pruning of the Hybrid Teas during the Summer is useful to encourage growth and flowers. The stronger branches that have flowered may be cut back one half or more. With the Hybrid Perpetuals all vigorous branches should be cut back one half after the June bloom to produce new shoots for Fall flowering.

Insects can be combated by spraying with Black Leaf 40; mildew, by spraying with Fungtrogen (see page 48) or with sulphur dusted or sprayed; black leaf-spot, by spraying with Fungtrogen or bordeaux mixture at intervals of ten days. See Triogen, the all-purpose spray, listed on page 49.

Do not water roses in the evening.



New Dawn Rose, first plant patented under the new U. S. patent laws. It is an everblooming type of Dr. W. Van Fleet.

HYBRID PERPETUAL ROSES

Larger, fuller, more hardy and more fragrant than other Roses; a wonderful display in June.

Frau Karl Druschki. Immense, pure white, perfectly double flowers.

George Arends. Fine pink with flowers like Frau Karl Druschki.

Mme. Albert Barbier. Large camellia-shaped blooms of cream and pinkish yellow; blooms unceasingly Spring to Autumn.

Mrs. John Laing. Beautiful soft pink; low-growing, profuse bloomer.

PRICE. Any of the above in strong 2-yr. Potted Field-Grown Roses 75c. ea.; 6 or more 65c. ea.; 25 or more 60c. ea.

Rugosa, or Shrub Roses

Shrubby, ornamental plants; flowering abundantly. Valuable for hedges or in shrub groups.

Agnes. Only rugosa rose which is really yellow, the coppery-yellow buds becoming amber-gold on opening; sweetly fragrant. 75c. each.

Harrison's Yellow. Bright yellow, blooming in early spring. 75c. each.

Hugonis. Light yellow flowers, 1½-2½ in. across, making striking effect borne on the slender branches in the early spring. 75c. each.

Rugosa (Japanese Rose). Large, white or red flowers followed by handsome scarlet-crimson fruits. 60c. each.

Rugosa hybrida (Grootendorst Japanese Rose). Bright red flowers early spring to frost. 60c. each.
6 or more Shrub Roses, less 15%.

HARDY CLIMBING ROSES

Useful for covering porches, trellises, arbors, fences, walls and banks as they make a superb display of bloom, while the foliage is generally excellent. Prune only after flowering.

American Pillar. Immense clusters of single, bright-crimson flowers, with clear white eye.

Blaze. (Patented). Scarlet-red flowers in great profusion; the everblooming Paul's Scarlet Climber. \$1.25 each; \$12.50 per doz.

Climbing American Beauty. Rich carmine flowers, 3-4 inches across, in great abundance.

Dr. W. Van Fleet. Best climbing rose. Long-pointed deep pink buds, opening a lighter shade of pink; large and fragrant.

Golden Climber. See page 5.

Jacotte. Coppery yellow, tinted coppery red; large, semi-double flowers. 90c. each; \$9.00 per doz.

Max Graf. Large, single, shining pink flowers. Fine for covering rocks, banks, etc.

Mme. Gregoire Stacchelin. Long-pointed crimson buds, showing iridescent pearl-pink inside as they open; perfumed. 90c. each; \$9.00 per doz.

New Dawn. The everblooming Dr. W. Van Fleet with which it is identical except that it blooms profusely throughout the Summer and Fall. \$1.50 each; \$15.00 per doz.

Paul's Scarlet Climber. Vivid scarlet, shaded crimson; semi-double flowers in clusters, borne in profusion.

Primrose. Double, canary-yellow flowers in profusion. One of best yellow climbing Roses.

Princess Van Orange. See page 5.

Scorcher. Handsome vermilion flowers, in great profusion. Everblooming. 90c. each; \$9.00 per doz.

PRICE. Any of the above in strong 2-yr. Potted Field-Grown Roses (except where noted) 75c. ea.; 6 or more 65c. ea.; 25 or more 60c. ea.

POLYANTHA or "BABY" ROSES

Constant abundance of clusters of small, perfectly formed flowers. They make ideal bedding plants, their heights seldom exceeding 15-20 in.

Elsce Poulsen. Bright rose-pink, semi-double, medium-size flowers. Long lasting.

Gloria Mundi. Brilliant orange-scarlet flowers, in huge clusters.

Golden Salmon. New. Large clusters of striking reddish orange buds and blooms of most amazing color; compact bushes blooming continually.

Gruss an Aachen. Large, very double flowers, resembling Hybrid Teas; delicate flesh-pink, overlaid with yellow, shading deeper in the center; continually in bloom.

PRICE. Any of the above in strong 2-yr. Potted Field-Grown Roses 75c. ea.; 6 or more 65c. ea.; 25 or more 60c. ea.

For parcel post charges on Potted Roses see page 33.



From early Spring to late Autumn there are always flowers to enjoy where Perennials are planted in groups in beds or borders. Once planted they continue to bloom and increase in beauty each succeeding year. Avoid planting only one of a kind owing to the bizarre effect it produces—always plant 3 or more of a kind.

Figures immediately following botanical names show the ultimate height attained by that variety, and is not size furnished. We always supply strong, vigorous plants of best planting size.

Varieties especially recommended for Rock Gardens are indicated by (*) and those that will thrive in part shade by (†).

ACHILLEA ptarmica fl. pl. *Sneezewort or Yarrow.* 1½-2 ft. Dense heads of double, purest white flowers. Good for borders and cut flowers. June-August. 20c. ea.; 3 for 50c.; \$1.50 per doz.

ALTHEA fl. pl. *Hollyhock.* 6-8 ft. Long spikes of double flowers measuring 2 to 3 in. across, on stately, majestic towering plants. Red, White, Pink, Yellow. State color desired. July-September. 20c. ea.; 3 for 50c.; \$1.50 per doz.

A. Allegheny. *Allegheny Hollyhock.* 6-8 ft. Mammoth exquisite flowers with fringed petals. Mixed colors. July-September. 20c. ea.; 3 for 50c.; \$1.50 per doz.

ALYSSUM saxatile compactum. *Goldentuft.* (*) 9-12 in. Dwarf, shrubby plant, grayish green leaves, mass of brilliant golden yellow flowers. Indispensable for Rock Gardens and for edging borders. May. 20c. ea.; 3 for 50c.; \$1.50 per doz.

ANCHUSA dropmori. *Dropmore Bugloss.* 4-5 ft. Gentian blue flowers in long sprays like the Larkspur. May-July. 20c. ea.; 3 for 50c.; \$1.50 per doz.

ANEMONE japonica alba. *Whirlwind Anemone.* 2-3 ft. Many large saucer-shaped white flowers. Charming when used as cut flowers. August-October. 30c. ea.; 2 for 50c.; \$2.50 per doz.

A. Queen Charlotte. 2-3 ft. Semi-double, silvery-pink. August-October. 30c. ea.; 2 for 50c.; \$2.50 per doz.

ANTHEMIS tinctoria. *Yellow Camomile.* (Marguerite). 1-1½ ft. Daisy-like yellow flowers in great profusion. Sturdy, easily grown plant; finely cut foliage. July-September. 20c. ea.; 3 for 50c.; \$1.50 per doz.

AQUILEGIA caerulea hybrida. *Long Spurred Columbine.* (*) (†) 2-3 ft. Graceful, spurred flowers of various colors arising from beautifully divided foliage. May-June. 20c. ea.; 3 for 50c.; \$1.50 per doz.

ARABIS alpina. *Alpine Rockcress.* (*) 4-8 in. Forms dense carpet of pure white flowers. Splendid for rock gardens and for cutting. April-May. 30c. ea.; 2 for 50c.; \$2.50 per doz.

ASCLEPIAS tuberosa. *Butterfly Weed.* 2-2½ ft. Beautiful, flat-topped clusters of bright orange-red flowers. July-August. 20c. ea.; 3 for 50c.; \$1.50 per doz.

ASTERS

ASTER alpinus. *Rock Aster.* (*) 8-10 in. Showy purplish-blue flowers. Indispensable for rock garden or edging borders. May-June.

A. alpinus, Mauve Cushion. (*) 9 in. Forms circular, cushion-like plant 2½ ft. across. The flowers of delicate mauve, with silvery white reflection, measure over 1¼ inches in diameter, produced in such profusion as to completely cover the plant. October-November.

A. novae-angliae roseus. *Rosy New England Aster.* 3-5 ft. Bright violet-purple. September-October.

A. Raynor. 4 ft. Large purplish-crimson. September-October.

A. St. Egwin. 3-4 ft. Soft rosy-pink. September-October.

A. Lavender Climax. 4-5 ft. Lavender-blue. September-October.

Price. Any of above Asters, 25c. ea.; 3 for 60c.; \$2.00 per doz.

ASTILBE (juno). *Juno Astilbe.* (†) 3 ft. Attractive, airy plumes of pink flowers. June-July. 40c. ea.; \$4.00 per doz.

A. Rose Pearl. (†) 2½ ft. Delicate silvery-pink plumes on long stems. June-July. 40c. ea.; \$4.00 per doz.

AUBRIETIA graeca. *Greek Aubrietia.* (*) (†) 6 in. Dainty creeping plant with large violet flowers. Good for mass effects. April-May. 25c. ea.; 3 for 60c.; \$2.00 per doz.

BAPTISIA australis. *Blue Wild-Indigo.* 2-3 ft. Attractive blue pea-shaped flowers in short spikes. June. 25c. ea.; 3 for 60c.; \$2.00 per doz.

Plant Perennials to Have an Abundance of Cut Flowers Throughout the Season.



Lillian Doty Pompon Chrysanthemums

CAMPANULA glomerata superba. *Showy Cluster Bellflower.* (†) 1½-2 ft. Dense clusters of funnel-shaped, violet-blue flowers. June-August. 25c. ea.; 3 for 60c.; \$2.00 per doz.

C. medium. *Cup and Saucer Bellflower.* 2 ft. Large, lovely bell-shaped flowers in mixed colors—white, pink, blue, purple. June-July. 25c. ea.; 3 for 60c.; \$2.00 per doz.

C. carpatica. *Blue Carpathian Bellflower.* (*) 9 in. Grows in dense tufts covered with clear blue flowers held erect on wiry stems. June-August. 25c. ea.; 3 for 60c.; \$2.00 per doz.

CERASTIUM tomentosum. *Snow-in-Summer.* (*) 6 in. Myriads of small white flowers from a dense silvery-foliaged plant. Valuable for rockeries, bedding or covering graves. May-July. 20c. ea.; 3 for 50c.; \$1.50 per doz.

CERATOSTIGMA plumbaginoides. *Larpenle Plumbago* (Leadwort). (*) 6-8 in. Attractive spreading plant with beautiful deep violet-blue flowers borne in abundance. July-October. 20c. ea.; 3 for 50c.; \$1.50 per doz.

HOW TO PLANT AND CARE FOR PERENNIALS

The secret of success with Perennials is an enriched soil together with good cultivation and careful watering.

Groups of three or more of a variety will produce the best effect in a border, using the taller growing varieties as a background. If planting near Shrubs which will rob the Perennials of plant nourishment, keep 3 ft. away from Shrubs.

Plant in Spring or early Fall, providing Winter protection for Fall plantings, especially Anemones, Campanula, Digitalis, Hollyhocks, Chrysanthemums, Stokesia and Tritoma. For best results transplant every few years to increase number and produce more abundant bloom.

The soil should be dug to a depth of at least 12 to 18 inches into which has been worked two inches of well-rotted stable manure. Some other good fertilizer can be used if stable manure is unobtainable, but stable manure is to be preferred.

At the beginning of freezing weather apply a mulch of cut tobacco stems, strawy manure, leaves or other light material to prevent alternate freezing and thawing of the soil, which may cause damage.

CHRYSANTHEMUMS

In late Fall when nearly all other flowers have ceased to bloom the hardy Chrysanthemums are still here to delight with their great variety of form and color.

Strong plants out of pots, ready for delivery after May 10.

LARGE FLOWERING VARIETIES

Most showy of the late Fall flowers. Should be planted in a protected location in good soil. For larger flowers allow only one bud to a plant.

Gold Lode. Very early yellow; large, shaggy flowers.

October Rose. Early, incurved, pink.

Silver Sheen. White Japanese incurved of large size and perfect ball shape.

20c. each; 3 for 50c.; \$1.50 per doz.

HARDY POMPON VARIETIES

Easily-grown plants, known to many persons as "Winter-shrubs." Extremely graceful and beautiful sprays of bloom of every conceivable form and shade of color. The varieties listed below will bloom before freezing weather.

Albert Muller. Apricot suffused with pink.

Bronze Buckingham. Glowing bronze; single.

Buckingham. Old rose; single type.

Cavalier. Deep wine color.

Detson. Early; rose-pink; button type.

Early Bronze. Beautiful bronze; button type.

Jean Treadway. Pink with dark centers.

Keystone. Rosy-pink; one of the best.

L'Argentuillais. Chestnut; decorative type.

Lillian Doty. Large incurved pink; aster type.

Mrs. Albert Phillips. Double; pink.

New York. Orange and wall-flower color.

October Dawn. Shell pink; decorative.

Rodell. Dwarf; yellow; button type.

20c. each; 3 for 50c.; \$1.50 per doz.

NEW KOREAN CHRYSANTHEMUMS

Hardier—Easier to Grow—More Profuse Flowering

These exquisite new creations with their lovely pastel shades compare with the Gerbera in daintiness and richness. Will bloom before frost, making wonderful color effects in the garden. Excel old Chrysanthemum types in hardness, profuseness of bloom and ease of growth. 2-2½ ft. high.

Apollo. Gold, bronze and red, suffused with glowing salmon forming sparkling combination. Immense sprays of single flowers 2 inches across.

Ceres. Lovely combination of old gold, chamois yellow and soft, coppery bronze, the mature petals appearing as if dusted with gold. Single.

Mercury. (Patented) Three inch single flowers opening coppery-bronze, changing to an exquisite blend of old rose and salmon. Very early blooming. Single.

Strong plants, 25c. ea.; \$2.50 per doz.

C. coccineum. *Painted Lady.* (Pyrethrum) 1½-2 ft. Bright colored flowers ranging from deep rich crimson to light pink, borne on long stems. "The Spring Chrysanthemum." Mixed colors only. June-July. 25c. ea.; 3 for 60c.; \$2.00 per doz.

C. maximum. *Shasta Daisy.* 1½-2 ft. Long, snow-white petals, yellow center. Excellent for cutting because of its beauty and profuse blossoming. Fine for beds and borders. June-October. 25c. ea.; 3 for 60c.; \$2.00 per doz.

Perennials Give Lots of Pleasure in the Garden at Little Cost.

COREOPSIS grandiflora. *Big Coreopsis* 2 ft. Rich golden-yellow flowers; valued for cutting. June-September. 20c. ea.; 3 for 50c.; \$1.50 per doz.

CONVALLARIA majalis. *Lily-of-the-Valley.* (*) (†) 6-9 in. Pure white, bell-shaped flowers on gracefully arching racemes. Beautiful, glossy green foliage. March-May. Clumps, 25c. ea.; 3 for 60c.; \$2.00 per doz.

DELPHINIUM

DELPHINIUM belladonna. *Belladonna Larkspur.* 3 ft. Produces numerous spikes of large single, sky-blue flowers. June-Sept. 25c. ea.; 3 for 60c.; \$2.00 per doz.

D. bellamosa. *Bellamosa Larkspur.* (Improved Blue Grotto). 4 ft. New. Many heavy spikes of dark indigo-blue flowers. Continuous bloomer. Resistant to mildew. Better than ordinary Bellamosa. June-September. 35c. ea.; 3 for 90c.; \$3.50 per doz.

D. hybridum. *Mountain Larkspur.* 4-5 ft. Double and single flowers in all shades from deepest indigo to palest silvery blue. Supplied in mixed colors only. June-September. 25c. ea.; 3 for 60c.; \$2.00 per doz.

D. Wrexham Hybrids. *Hollyhock Larkspur.* 5-6 ft. Enormous individual flowers, 1½-2 in. across, in all shades of blue blended with mauve and violet. A tall spire-like which is a solid mass of bloom. 30c. ea.; 2 for 50c.; \$2.50 per doz.

12 Delphiniums
Assorted Varieties

\$2.50 Postpaid

3 Belladonna 3 Hybrids
3 Bellamosa 3 Wrexham

DIANTHUS

DIANTHUS alpinus alwoodii. *Clove Pink.* (*) 8-12 in. Large flowers of various shades of rose and pink; glossy leaves. One of the loveliest of rockery pinks. July-August.

D. barbatus. *Sweet William.* 2 ft. No garden is complete without this cheerful, sweet-smelling and showy flower with colors ranging from purest white to blackest red. May-July.

D. Newport Pink. 1½ ft. Watermelon pink or salmon-rose. June-July.

D. Scarlet Beauty. 1-1½ ft. Rich deep scarlet; bright green foliage. Very fine. May-June.

D. plumarius. *Grass Pink.* (*) 1 ft. Clove-scented flowers in great masses. Colors varied. May-June.

Price. Any above Dianthus, 20c. ea.; 3 for 40c.; \$1.25 per doz.

DICENTRA spectabilis. *Bleedingheart.* (*) (†) 1½-2 ft. Pink, heart-shaped, pendant flowers along the stems. April-June. Strong plants, 30c. ea.; 3 for 70c.; \$2.50 per doz.

DICTAMNUS albus. *Gasplant.* 2-3 ft. Dense clumps of dark green, glossy foliage. White flowers on spikes. Gives off a gas that may be ignited. June-July. 25c. ea.; 3 for 60c.; \$2.00 per doz.

D. ruber. *Purple Gasplant.* 2-3 ft. Reddish-purple variety of above. June-July. 25c. ea.; 3 for 60c.; \$2.00 per doz.

DIGITALIS alba. *White Foxglove.* (†) 3 ft. Thimble-like, white flowers hanging closely on erect, long flowering spikes. June-July. 25c. ea.; 3 for 60c.; \$2.00 per doz.

D. purpurea. *Purple Foxglove.* (†) 2-3 ft. Purple form of the preceding. July-August. 25c. ea.; 3 for 60c.; \$2.00 per doz.

D. rosea. *Pink Foxglove.* (†) 2-3 ft. Rose-pink form of the dignified Foxglove. June-July. 25c. ea.; 3 for 60c.; \$2.00 per doz.

DORONICUM excelsum. *Showy Leopardbane.* 2 ft. Large, bright yellow, daisy-like flowers; very effective in masses and for cutting. April. 25c. ea.; 3 for 60c.; \$2.00 per doz.

Transplanted Without Checking Growth

Hazle Brook, Pa.

The Shrubs and Plants reached me in O. K. condition. Seems to me they kept right on growing from the day they arrived. Thanks for promptness and satisfactory treatment.
Mrs. S. F. E.



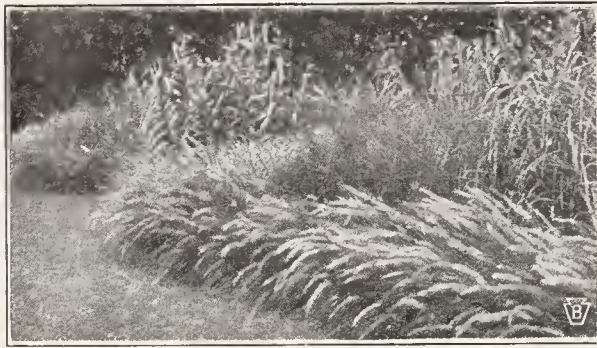
Anemone Japonica



Delphinium



Kniphofia Waria



Beautiful effect produced by edging lawn with Ornamental Hardy Grasses.

EULALIA—HARDY GRASSES

Eulalias are remarkably hardy, and universal favorites for bedding. Interspersed in the shrubbery or perennial border, they are at home. Very effective results can be secured.

EULALIA Japonica. 6-8 ft. Rich, green foliage which waves with the slightest breeze.

E. Japonica gracillima univittata. 5-7 ft. Narrow-leaved variety of above, very graceful and pleasing.

E. Japonica variegata. 4-5 ft. Striped with white variegation, forming an attractive plant when grouped with the green.

E. Japonica zebrina. 5-7 ft. Barred with bronze-yellow, and very popular, due to the bizarre effect.

Price. Clumps, 6 inch diameter, 30c. ea.; 3 for 75c.

EUPATORIUM coelestinum. *Mist flower.* 1½-2 ft. Large flat heads of small, fluffy, azure-blue flowers. Sometimes called Hardy Ageratum. August-October. 20c. ea.; 3 for 50c.; \$1.50 per doz.

EUPHORBIA corollata. *Flowering Spurge.* 2-3 ft. White flowers with small green eye, in umbels. Used like Gypsophila for cutting. July-October. 20c. ea.; 3 for 50c.; \$1.50 per doz.

E. polychroma. *Cushion Spurge.* (*) 1-2 ft. Masses of chrome-yellow flower-like bracts. Resembles a Poinsettia, only yellow. April-May. 25c. ea.; 3 for 65c.; \$2.50 per doz.

Funkia. See Hosta.

GAILLARDIA aristata compacta. *Bush Gaillardia.* 2 ft. Conspicuous for profusion and duration of bloom and striking color effect. The petals are broadly margined yellow, the remainder of the flower crimson. Good cut flower variety. June-October. 20c. ea.; 3 for 50c.; \$1.50 per doz.

GYPSOPHILA paniculata fl. pl. *Bristol Fairy Babysbreath.* 2-3 ft. Large panicles of double, white blooms, with a misty grace not found in other flowers. Excellent cut flower combined in bouquets. Can be cut and dried for use during the Winter months. July-August. 40c. ea.; 3 for \$1.10; \$4.00 per doz.

HELENIUM autumnale. *Sneezeweed.* 5 ft. Lemon-yellow, flat flowers borne in large heads or clusters. Good for cut flowers. July-September. 25c. ea.; 3 for 60c.; \$2.00 per doz.

H. hoopesi. *Orange Sneezeweed.* 2 ft. Clear rich yellow sort with slightly drooping rays. June-August. 25c. ea.; 3 for 60c.; \$2.00 per doz.

H. Riverton Gem. 2½-3 ft. Old gold, suffused with bright terra cotta, changing to wall flower red. August-October. 25c. ea.; 3 for 60c.; \$2.00 per doz.

HELIANTHEMUM mutabile. *Fickle Sunrose.* (*) 1 ft. Pretty, low growing, evergreen plant, forming broad clump which becomes hidden by the masses of bloom. Rich orange color. June-July. 25c. ea.; 3 for 60c.; \$2.00 per doz.

HELIOPSIS zinniaeflora. *Zinnia Heliopsis.* 2-3 ft. Double, golden-yellow flowers, 2½-3 in. across, on long strong stems. June-September. 20c. ea.; 3 for 50c.; \$1.50 per doz.

Hemerocallis—DAY LILY

(See new hybrid varieties listed on page 4)

HEMEROCALLIS dumertieri. *Early Daylily.* (†) 1½-2 ft. Very showy, wide-funneled flowers of a bronze yellow on the outside and a rich yellow inside. Excellent for cutting. May-July.

H. flava. *Lemon Daylily.* 2-3 ft. Clear lemon or canary yellow type; sweet scented. June-July.

H. kwanso. *Kwanso Daylily.* 4-5 ft. Orange, shaded crimson, semi-double. July-August.

H. thunbergi. *Japanese Daylily.* 3-4 ft. Latest to flower; rich buttercup yellow. July-August.

Price. Any of above Daylilies, 25c. ea.; 3 for 60c.; \$2.00 per doz.

HEPATICA triloba. *Roundlobe Hepatica.* (*) (†) 3-4 in. Light blue flowers showing as soon as the snow disappears. Pretty, rounded, leathery leaves. March-April. 20c. ea.; 3 for 50c.; \$1.80 per doz.

HEUCHERA sanguinea. *Coralbells.* 1½-2 ft. From a mass of ornamental foliage rise graceful spikes covered with pendant flowers, bright coral crimson. June-August. 25c. ea.; 3 for 60c.; \$2.00 per doz.

HIBISCUS (Marvels). *Rosemallow.* 6-8 ft. Flowers resemble a single Hollyhock bloom only much larger and velvety. Good in masses or among shrubs where a large, showy plant is required. White, pink or scarlet (State color). July-Sept. 25c. ea.; 3 for 60c.; \$2.00 per doz.

Hosta—PLANTAIN LILY

HOSTA caerulea. *Plantainlily.* (†) 1-1½ ft. Spikes of nodding, light-blue, lily-like blossoms; large, handsome, dark green, glossy foliage in clumps. July-August.

H. grandiflora. *Big Plantainlily.* (†) 1½-2 ft. Large, waxy-white flowers with an odor like orange blossoms. August-September.

H. lancifolia. *Lanceleaf Plantainlily.* (†) 1½-2 ft. Violet-blue flowers; long, narrow leaves. July-August.

Price. Any of above Plantain Lilies. 20c. ea.; 3 for 50c.; \$1.50 per doz.

IBERIS gibraltarica. *Gibraltar Candytuft.* (*) 1-1½ ft. Low growing plant with evergreen foliage, completely hidden by the large clusters of white flowers deeply tinted rose-lavender. Charming on ledges or walls in the rock garden, and good, too, for cutting. March-June. 25c. ea.; 3 for 60c.; \$2.00 per doz.

I. sempervirens. *Evergreen Candytuft.* (*) 9-12 in. Low mats covered with innumerable, flat, dense clusters of pure white flowers. March-June. 25c. ea.; 3 for 60c.; \$2.00 per doz.

HOW TO BUILD A ROCK GARDEN

Select a gentle slope. Use the largest boulders possible, placing the bigger stones at the base, the strata all running the same. They should appear naturally placed. A few large rocks rather than many small ones is preferable.

In the pockets between boulders there should be a rich, porous, moisture-holding soil at least two feet deep. Moisture in sufficient amount is the token of success, even more necessary than shade or part shade.

Most entrancing groups of plants for Rock Gardens are low growing, brilliantly flowering, rather heavily foliaged Perennials.

For interesting results the year round, include some dwarf Evergreens like Abelia, Azaleas, Daphne, Junipers, Retinosporas, Yucca, Yews, Pachysandra, Cotoneasters, for their touch of evergreen foliage, stability and the floral beauty of the blooming kinds.

Low Annuals should always be added for continuous bloom throughout the Summer. (See list of annuals on page 46.)

Perennials Designated With an Asterisk () Are Rock Garden Favorites.*

IRIS (*) (†)

Incomparable for its beauty of soft iridescence of color revealed when you look into its heart, the Iris has very appropriately been termed, "The Poor Man's Orchid."

Not partial as to soil or location and will flourish in semi-shade. Does well planted in groups or in borders.

Come and see our Iris display second week in June.

Iris germanica—BEARDED IRIS

Aurea.* (californica) Rich chrome yellow; large flowers, perfectly formed.

Foster's Yellow. Yellow.

Fro. S. deep gold; F. brilliant chestnut-brown.

Hercules. Clear lilac-blue.

Japanesque.* Lavender.

Kochii.* Claret purple.

Lent A. Williamson.* Royal purple, yellow beard.

Lohengrin. S. and F. soft shade of cattleya-rose. Very large flower.

Lord of June.* Violet lavender.

Powhatan.* Violet claret.

Princess Victoria Louise. Yellow.

Quaker Lady. S. lavender, yellow shadings; F. ageratum blue and old gold; orange beard.

Queen of May. Lovely soft rose-lilac, almost pink.

Rev. Wurtelle.* Bronze.

Roseway.* Deep red-pink, broad orange beard.

Seminole.* Violet-rose and crimson.

Sherwin-Wright. Rich golden yellow without markings or shadings, profuse bloomer.

Tamar.* Reddish-lilac.

The Inca.* Clear yellow with falls dark-plum, edged gold.

Tregastel. Lilac violet.

Troost.* Rose colored, venation on long falls gives lacy effect.

Mixed. Splendid collection of assorted varieties. \$1.50 per doz.; \$10.00 per 100.

Price of Iris. Any variety except those marked with an asterisk (*), 3 for 50c.; 10 for \$1.50; 100 for \$12.00.

Choicest exhibition varieties marked *, 3 for 60c.; 10 for \$2.00; or \$16.00 per 100, your selection.

Iris pseudacorus—LAEVIGATA IRIS

I. pseudacorus bastardi. *Yellowflag Iris.* Yellow; tall growing; prolific. 25c. ea.; 3 for 50c.; \$1.50 per doz.

Iris pumila—DWARF IRIS

I. pumila. *Dwarf Iris.* 6-9 in.* Its early Spring blooms make this a gem in the Rock Garden; also a good edging plant. Lavender or blue flowers. Likes well drained spot. April-May. 20c. ea.; 3 for 50c.; \$1.50 per doz.

Iris Sibirica—SIBERIAN IRIS

Thrive best in moist situations but do well under ordinary garden treatment. Showy flowers May and June in clusters; foliage long, narrow and dense.

I. sibirica. *Emperor Siberian Iris.* Large, deep violet-blue flower, borne well above foliage.

I. sibirica orientalis. *Snow Queen Siberian Iris.* Pure white form; most enchanting.

Price. 20c. ea.; 3 for 50c.; \$1.50 per doz.

KNIPHOFIA varia (Tritoma). *Torchlily or Red Hot Poker.* 2-3 ft. A plant of striking appearance, bearing pyramidal spikes of blazing red flowers, one hundred on a spike. For borders or massing on the lawn. August-October. 25c. ea.; 3 for 60c.; \$2.00 per doz.



The beautiful Bearded Iris

LAVANDULA officinalis. *True Lavender.* (*) 1-2 ft. A favorite because of its delicate odor. Fragrant spikes of lavender flowers, so useful for the linen chest. Aromatic, silver-gray foliage. July-August. 25c. ea.; 3 for 60c.; \$2.00 per doz.

LIATRIS pycnostachya. *Cattail Gayfeather.* (†) 4-5 ft. Long spikes of small, light rosy-purple pea-like flowers. Succession of bloom is from tip downward. Splendid in the rear of borders. Good cut flower. July-August. 25c. ea.; 3 for 60c.; \$2.00 per doz.

Lilium—LILIES

In Lilies the best results, both as to growth and effect, are secured by planting among low shrubs or in the perennial border. While profiting by partial shade they should never be planted near or under trees. Plant the Goldband Lily under 8 inches of soil, others 6 inches. Good winter protection should be provided. Potted plants supplied for Spring planting.

LILIUM auratum. *Goldband Lily.* Large, ivory-white, fragrant flowers with central band of bright yellow and numerous deep purple spots; 15-18 flowers on a stem; July and August. 40c. ea.; \$3.50 per 10.

L. candidum. *Madonna Lily.* Pure white, fragrant flowers on long stems in June and July. 3-4 ft. Plant only in August and September. 35c. ea.; \$3.00 per 10.

L. regale. *Regal Lily.* Fragrant, trumpet-shaped flowers, ivory-white, shaded pink, tinged canary-yellow at base. Blooms freely in July. 35c. ea.; \$3.00 per 10.

L. speciosum magnificum (rubrum) *Great Speciosum Lily.* Rich, ruby-carmine flowers, 6-8 in. across, ten to fifteen on a plant; August and September. 35c. ea.; \$3.00 per 10.

L. tigrinum splendens. *Giant Tiger Lily.* Immense spikes of orange-scarlet flowers, spotted black, sometimes twenty-five to a stem. 25c. ea.; \$2.00 per 10.

LIMONIUM latifolium (statice). *Sea-lavender.* 1-2 ft. Handsome plants with heads of dark blue flowers in much-branched panicles. Invaluable for cutting, the flowers, when dried, lasting for months. June-August. 20c. ea.; 3 for 40c.; \$1.20 per doz.

If only one Iris is wanted the cost will be 1/2 the quoted price for 3.



Madonna Lily (See Page 39)

- LINUM perenne.** *Perennial Flax.* (*) 1-1½ ft. Foliage and flowers airy and graceful, giving the appearance of a small, feathery bush. Small, pearly-blue flowers in great numbers. Light colored, evergreen foliage. June-August. 20c. ea.; 3 for 40c.; \$1.50 per doz.
- LOBELIA cardinalis.** *Cardinal Flower.* (†) 2-4 ft. Vivid, crimson flowers; often 10 or more spikes, 24 to 30 inches long, on a plant. Requires moist location. July-October. 25c. ea.; 3 for 60c.; \$2.00 per doz.
- LYCHNIS alpina.** *Arctic Campion.* (*) 6-12 in. Charming dwarf plant with rose-pink flowers. July-August. 25c. ea.; 3 for 60c.; \$2.00 per doz.
- L. chalconica.** *Maltese Cross.* 2-3 ft. Immense heads of vermilion-scarlet flowers. June-August. 25c. ea.; 3 for 60c.; \$2.00 per doz.
- LYTHRUM roseum.** *Rose Loosestrife.* (†) 3-4 ft. Tall, erect, graceful spikes of rose colored flowers. July-August. 20c. ea.; 3 for 50c.; \$1.50 per doz.
- MERTENSIA virginica.** *Virginia Bluebells* (Cowslip). (*) (†) 1-1½ ft. Lovely, gentian-blue, funnel-shaped flowers, hanging in drooping, nodding, graceful clusters. March-May. 20c. ea.; 3 for 50c.; \$1.50 per doz.
- MONARDA splendens.** *Blazing Beebalm* (Bergamot). (†) 2-3 ft. Leaves have a "minty" odor. Flowers scarlet-red in close heads, surrounded by colored bracts. July-September. 20c. ea.; 3 for 50c.; \$1.50 per doz.
- MYOSOTIS semperflorens.** *Perpetual Forget-me-not.* (*) (†) 6-9 in. Large, rich blue flowers with yellow eye. Good for damp places. March-August. 20c. ea.; 3 for 50c.; \$1.50 per doz.
- NEPETA mussini.** *Ground Ivy.* (*) 10-12 in. Grows in compact tufts covered with masses of small, blue flowers. July-August. 20c. ea.; 3 for 50c.; \$1.50 per doz.
- OENOTHERA missouriensis.** *Ozark Sundrops* (Evening Primrose) (*) 1 ft. Low trailing plant, bearing profusion of satiny, four-petalled, golden flowers often 5 inches in diameter. One of largest flowers of the garden. June-August. 25c. ea.; 3 for 60c.; \$2.00 per doz.

Pleased With Peony Roots

Beloit, Wis.
Peony roots received and sure am well pleased with them.
W. C. D.

PEONIES

PEONY CULTURE

An abundance of plant food and moisture are essential to success with Peonies as they are strong growers and produce many enormous flowers. As the plants grow and bloom top dress with bone meal between, but not on, the plants.

Plant 3½-4 ft. apart and cover the crown bud under only two or three inches of soil. Plant very early in the Spring or in the Fall to obtain best results. Muleh in the Fall.

Rich in color, attractive in form, and beautiful in foliage the Peony very appropriately has been called "King of Spring Flowers." Equaling in beauty, coloring and delicacy the finest roses, many of the fragrant varieties have the true rose odor.

Peonies are remarkably easy to grow, perfectly hardy, free from the many diseases and insects that attack so many plants, and will bloom year after year.

Peonies can be planted in every conceivable place—as single specimens, in large or small beds, against shrubs or in long rows bordering walks and drives. Grandest effects are always produced by mass plantings.

Come and see our Peony display the second week in June. The best time to plant is August to October. We will book orders in advance for Fall delivery at these prices.

We supply only good, vigorous roots with 3 to 5 strong eyes, which insures power to grow.

- Adolph Rousseand.** Purplish red. 75c. each; 3 for \$2.00.
- Albatre.** White, carmine lined. 50c. each; 3 for \$1.25.
- Albert Crousse.** Salmon pink. 50c. each; 3 for \$1.25.
- Alexandre Dumas.** Brilliant pink. 50c. each; 3 for \$1.25.
- Asa Gray.** Pink, carmine dots, 50c. each; 3 for \$1.25.
- Cameron.** Dark red. 60c. ea.; 3 for \$1.50.
- Cherry Hill.** Glistening deep garnet; very early. \$1.00 each; 3 for \$2.75.
- Couronne d'Or.** Snowy white, carmine edge. 50c. ea.; 3 for \$1.25.



Couronne d'Or Peony

Prices given on Peonies are for strong 3 to 5 eye blooming-size roots

Edulis Superba. Pink. 50c. ea.; 3 for \$1.25.

Felix Crousse. Brilliant red. 50c. ea.; 3 for \$1.25.

Festiva Maxima. Snowy white. 50c. ea.; 3 for \$1.25.

Gloire de Chas. Gombault. Pink. 50c. ea.; 3 for \$1.25.

H. G. Hill. Tyrian rose. 75c. ea.; 3 for \$2.00.

Karl Rosefield. Crimson. 50c. ea.; 3 for \$1.25.

Louis Van Houtte. Dark crimson. 50c. ea.; 3 for \$1.25.

Marie Crousse. Lilac-rose. 50c.; ea.; 3 for \$1.25.

Marie Lemoine. Sulphur-white. 50c.; ea.; 3 for \$1.25.

M. Jules Elie. Pink. 50c. ea.; 3 for \$1.25.

Mme. Bucquet. Dark red. 60c. ea.; 3 for \$1.50.

Monsieur Krelage. Red. 50c. ea.; 3 for \$1.25.

Monsieur Martin Cahuzac. Maroon. \$1.00 ea.; 3 for \$2.75.

Officinalis Rubra. Red. 50c. ea.; 3 for \$1.25.

President Taft. (Reine Hortense). Hydrangea pink. 75c. ea.; 3 for \$2.00.

Rubra Superba. Crimson. 50c. ea.; 3 for \$1.25.

Sarah Bernhardt (Lemoine). Mauve rose. \$1.00 ea.; 3 for \$2.50.

Walter Faxon. Bright rose pink; free bloomer; one of the best real pinks. \$1.00 ea.; 3 for \$2.75.



Sarah Bernhardt Peony

P. virg. vivida. *Vivid False-dragonhead.* 3-4 ft. Brilliant pink; flowers large. September-October. 20c. ea.; 3 for 50c.; \$1.50 per doz.

PLATYCODON grandiflorum. *Balloon Flower.* (Chinese Bellflower). (*) 2-3 ft. Very large, deep blue, star-shaped flowers. When in bud are inflated like balloons. July-September. 20c. ea.; 3 for 50c.; \$1.50 per doz.

P. album. *White Balloon Flower.* (*) 2-3 ft. Pearly-white flowers. 20c. ea.; 3 for 50c.; \$1.50 per doz.

PLUMBAGO. See *Ceratostigma.* Page 36.

PRIMULA veris. *Cowslip Primrose.* (*) (†) 6-9 in. Showy plants with clusters of small, yellow flowers that are graceful and dainty. April-May. 25c. ea.; 3 for 60c.; \$2.00 per doz.

PYRETHRUM. See *Chrysanthemum coccineum.* Page 36.

RUDBECKIA speciosa (newmanii). *Showy Coneflower* (Black Eyed Susan). (†) 3 ft. Handsome, single, rich orange-yellow, daisy-like flowers with high, purple-black cone in the center. Useful in bold masses. July-September. 20c. ea.; 3 for 50c.; \$1.50 per doz.

R. subtomentosa. *Sweet Coneflower.* 3 ft. Flowers a brilliant yellow with a chocolate center, borne in large clusters. August-September. 20c. ea.; 3 for 50c.; \$1.50 per doz.

SALVIA azurea grandiflora. *Azure Sage.* 3-4 ft. Sky-blue flowers in great profusion on tall, slender spikes. August-September. 25c. ea.; 3 for 60c.; \$2.00 per doz.

SAPONARIA ocymoides splendens. *Rock Soapwort* (Bouncing Bet). (*) 6-9 in. Numerous bright, rosy-crimson flowers in loose, flat-topped clusters. May-August. 20c. ea.; 3 for 50c.; \$1.50 per doz.

SAXIFRAGE megasea crassifolia. *Leather Saxifrage.* (*) (†) 12-15 in. Drooping masses of pink flowers high above the large, clustered leaves. April-June. 25c. ea.; 3 for 65c.; \$2.50 per doz.

TREE PEONIES

Banksii. Large, double, flesh pink. 3 to 5 years old. \$3.00 ea.

Five choice varieties, the best of private collections, with distinct, rich colors; unnamed; must be seen in bloom to be appreciated. 3 to 5 years old. \$5.00 ea.

3 RARE PEONIES

\$2.50 Postpaid

1 **Cherry Hill.** Garnet; very early.

1 **Mons. Martin Cahuzac.** Maroon; midseason.

1 **Walter Faxon.** Rose pink; midseason.

One strong root of each above named varieties sent postpaid for only \$2.50; regularly cataloged at \$3.00.

Papaver—POPPY

PAPAVER orientale. *Oriental Poppy.* (†) 2-3 ft. Dazzling, silken, cup shaped blooms of brightest crimson-scarlet, with large purplish-black blotches at base of petals. May-June.

P. livermore. (†) 2-3 ft. Very large, dark-crimson flowers with dark blotch. May-June.

P. Mrs. Perry. (†) 2-3 ft. Lovely shade of apricot unique in Poppies. May-June.

Price. Any of above Oriental Poppies, 25c. ea.; 3 for 60c.; \$2.00 per doz.

August is the best time to plant Poppies. We will book orders in advance for August delivery at above prices.

PHYSOTEGIA virginiana. *Virginia False-dragonhead* (Obedient flower). 3-4 ft. Beautiful, long spikes of pretty, soft pink, tube-shaped blooms. July-September. 20c. ea.; 3 for 50c.; \$1.20 per doz.

Brighten the Home Grounds With Flowers' Cheering Presence.



The Phlox is one of the best all around garden plants, and should be generously planted.

HARDY PHLOX

For all-round reliability no other garden flower can excel the Phlox, which embodies all the qualities desirable in a plant—hardiness, upright carriage, pretty foliage, fragrance, beauty and variety of color, immunity from disease. Besides, Phlox have the added merit of being in bloom when most other plants are out of bloom.

Fortunately these gorgeous plants have a diversity of valuable use, being attractive as single specimens, in small groups or large beds, or when massed against a background of Shrubs. They are also ideal for cut flowers.

B. Comte. Rich satiny amaranth; medium; late.

Columbian. See Page 4.

Commander. Deep crimson red, darker eye; tall. 25c. ea.; 3 for 65c.; \$2.25 per doz.

Daily Sketch. See Page 4.

Enchantress. Bright salmon pink with darker eye. Resembles Elizabeth Campbell in color but of much stronger growth, and rich green, glossy foliage. 25c. ea.; 3 for 65c.; \$2.25 per doz.

Fuerbrand. Brilliant orange scarlet; medium; blooms very freely. 25c. ea.; 3 for 65c.; \$2.25 per doz.

Hauptman Koehl. Dark blood red. Large clusters on strong, tall stems. Individual flowers large. Keeps color in heat and rain. 30c. ea.; 3 for 80c.; \$2.75 per doz.

Jeanne d'Arc. Pure white; large flowering; late; tall.

Miss Lingard. Fine white, with pink eye; free bloomer; early; medium.

Morgenrood. Large clusters of a bright rose shade with deeper colored eye. A very distinct variety; dwarf. 25c. each; 3 for 65c.; \$2.25 per doz.

4 Lovely Phlox \$1.20 Postpaid

One each of the following four varieties in large blooming-size plants will be sent to any address for \$1.20 postpaid.

- 1 **Daily Sketch.** Light pink.
- 1 **Hauptman Koehl.** Dark red.
- 1 **Morgenrood.** Bright pink.
- 1 **Enchantress.** Salmon pink.

See full description of each variety given on this page.

Mrs. Jenkins (Independence). Immense, compact heads of pure white flowers; midseason; tall.

R. P. Struthers. Bright rosy-carmine with claret eye; midseason; tall.

Rheinlander. Beautiful apricot pink; immense trusses of large flowers; early; medium.

Thor. Deep apricot-pink, suffused and overlaid with a scarlet glow; white halo surrounds the red eye; dwarf; early.

Widar. Light, reddish violet; large white center.

Price. Except where noted, 20c. ea.; 3 for 50c.; \$1.80 per doz.

Dwarf Phlox, Mountain Pinks

PHLOX subulata alba. *White Moss.* (*) 4-6 in. Myriads of pure white flowers 1 inch in diameter completely covering the moss-like, evergreen foliage. Good in rockeries, in cemeteries, on terraces, between stepping stones and for edging borders. May.

P. lilacina. *Lilac Moss.* (*) 4-6 in. Flowers clear lilac. May.

P. rosea. *Rose Moss.* (*) 4-6 in. Bright rose-pink. May.

P. vivid. 3-6 in. Bright pink with fiery-red eye. Finest free flowering dwarf phlox 25c. ea.; 3 for 60c.; \$2.00 per doz.

Prices. Any above Dwarf Phlox, except where noted, 20c. ea.; 3 for 50c.; \$1.25 per doz.; \$10.00 per 100.

SCABIOSA caucasica. *Blue Bonnet* (Pincushion Flower). 1-1½ ft. Lovely heads of soft and charming shade of lavender. June-October. 25c. ea.; 3 for 60c.; \$2.00 per doz.

SEDUM—STONECROP

Charming group of plants, mostly dwarf evergreen types, with pretty leaves in rosettes. Exceptionally desirable in the rock garden or in the crevices of old walls.

SEDUM acre. *Goldmoss.* (*) 3-4 in. Attractive, minute, light-green leaves completely covered by masses of bright yellow flowers. Much used for covering graves. June-July.

S. album. *White Stonecrop.* (*) 4-6 in. Creeping variety with thick, waxy, round, bronze foliage and white flowers. July-August.

S. glaucum. *Silver Jenny Stonecrop.* (*) 1-2 in. Evergreen species with silvery-blue foliage and pink flowers. June.

S. sarmentosum. *Stringy Stonecrop.* (*) 6 in. Strong spreading habit. Its bright yellow flowers make an attractive, soft carpet. Best sedum for filling seams in wall gardens. May-June.

S. sieboldii. *Siebold Stonecrop.* (*) 6-9 in. Round, succulent, gray leaves, borne in threes, becoming pinkish in the autumn. Bright pink flowers. August-September.

S. spectabile. *Showy Stonecrop.* (*) 1½-2 ft. Pink or rosy-red flowers produced abundantly in flat clusters, 3-4 inches across. Thick, juicy, gray-green leaves. August-October.

S. stoloniferum. *Running Stonecrop.* (*) 5-6 in. Numerous purplish-pink flowers. Flat, succulent, evergreen leaves. July-August.

Price. Any above Sedums, 20c. ea.; 3 for 60c.; \$2.00 per doz.

Please Include Sufficient for Parcel Post Charges; See Page 6

STOKESIA laevis. *Stokesia* (Cornflower Aster). 1-1½ ft. Resembles the China-aster, but perfectly hardy. Flowers blue-lavender, 3-4 inches across, in great profusion. August-October. 20c. ea.; 3 for 50c., \$1.50 per doz.

THYMUS serpyllum. *Mother-of-Thyme.* 3-4 in. (*) (†) Will spread into neat patches of fragrant foliage, studded with lilac flowers. June-July. 20c. ea.; 3 for 50c., \$1.50 per doz.

TRILLIUM grandiflorum. *Wake Robin.* (*) (†) 1-1½ ft. Interesting plant with three leaves in a whorl, and large pure white flowers with three petal-like segments. April-May. 25c. ea.; 3 for 60c.; \$2.00 per doz.

TROLLIUS europeus. *Globe Flower.* (†) 1½-2 ft. Yellow, globular flowers resembling a glorified buttercup. May-July. 35c. ea.; 3 for 75c.; \$2.50 per doz.

VERONICA incana. *Woolly Speedwell.* (*) 1-1½ ft. Amethyst-blue flowers in long, narrow spikes. Gray, woolly foliage. July-September. 25c. ea.; 3 for 60c.; \$2.00 per doz.

V. longifolia subsessilis. *Clump Speedwell.* 2-3 ft. One of the most attractive of all blue-violet flowers for the border. Long spikes completely studded with flowers of an intense, lustrous color. Fine for cutting. August-October. 25c. ea.; 3 for 60c.; \$2.00 per doz.

V. repens. *Creeping Speedwell.* (*) (†) 3-4 in. Prostrate, compact plant growing in dense masses, with light blue flowers. May. 20c. ea.; 3 for 50c.; \$1.50 per doz.

V. teucrium rupestris. *Rock Speedwell.* (*) (†) 3-4 in. Thickly matted, deep green foliage hidden under a cloud of bright blue flowers. May-June. 20c. ea., 3 for 50c.; \$1.50 per doz.

V. teucrium aureum. *Golden Speedwell.* (*) (†) 3-4 in. Similar to preceding, except foliage is golden. Blue flowers. May-June. 25c. ea.; 3 for 60c.; \$2.00 per doz.

VINCA minor. *Periwinkle* (Trailing Myrtle). (*) (†) 4-6 in. Trailing, evergreen plant. Pretty, blue flowers. April-June. 15c. ea.; \$1.20 per doz.; \$8.00 per 100.

V. alba. *White Periwinkle.* (*) (†) White flowering form of Vinca. 15c. ea.; \$1.20 per doz.; \$8.00 per 100.

VIOLA cornuta. *Jersey Gem. Viola.* (*) 5-6 in. Rich violet flowers, slightly perfumed. Vigorous, bushy growth. May-September. 20c. ea.; 3 for 55c.; \$2.00 per doz.

**EXPERT GARDEN SERVICE
AVAILABLE TO YOU**

Our skilled men are available to do your pruning and spraying and other garden service in season. Often they are called long distances for such work as Rock Garden Construction, Landscape Operations, Big Tree Moving, Tree Surgery, Spraying, etc.

Your home grounds can be ordinary looking, or they can be a delight. All depends on what you invest in them. Neglect shows poor housekeeping and eventually leads to ruin. Be a good housekeeper. Your home should come first.

Write for further information if interested in this helpful, expert service we can render you.



Campanula



Painted Lady



Hollyhock



Gladioli

All first size bulbs, 1½ inch and up. Shipments prepaid.

Dr. F. E. Bennett. Vivid scarlet. Bright and showy. 3 for 20c.; 65c. per dozen.

Giant Nymph. Extra large; very fine light pink suffused with cream yellow; tall habit. 3 for 18c.; 60c. per doz.

Golden Measure. Pure yellow, large flowering; tall; late midseason. 3 for 15c.; 50c. per doz

Halley. Delicate salmon-pink with slight roseate tinge, early blooming. 3 for 15c.; 45c. per doz.

Mary Pickford. Creamy white; throat sulphur yellow. 3 for 20c.; 65c. per dozen.

Mrs. Dr. Norton. La France pink shading to a pink throat. Lower petals have creamy bases with carmine pencilings. 3 for 15c.; 50c. per doz.

Mrs. F. C. Peters. Beautiful orchid-lavender. Throat stained wine-purple. Many flowers open at one time on tall spikes. 3 for 20c.; 65c. per doz.

Mrs. Frank Pendleton. Lovely flushed salmon-pink, with brilliant carmine blotches in the throat. Exquisite. 3 for 15c.; 45c. per doz.

Standard Gladioli Mixture

Includes mixed colors and types. This mixture will give general satisfaction.

All blooming-size bulbs, by express collect, \$20.00 per 1000; by parcel post prepaid, \$2.50 per 100; 30c. per doz.

Naney Hanks. Apricot and orange-pink—unusual shade for Gladioli. Many flowers open at one time. 3 for 18c.; 60c. per doz.

Picardy. Most sensational recent introduction in Gladioli. Clear pure pink, beautifully painted with red in the throat. Blooms 5 to 6 inches across. 3 for 30c.; \$1.00 per dozen.

Schwaben. Pure canary-yellow, shading to soft yellow, with purple tinge on lower petals. Largest and strongest yellow. 3 for 15c.; 50c. per doz.

Spirit of St. Louis. Splendid orange-saffron. Very showy. 3 for 20c.; 65c. per dozen.

Veilchenblau. Clear, deep violet-blue; lower petals a darker shade. Wonderful, large spikes. 3 for 25c.; 85c. per dozen.

Dahlias

C., Cactus; D., Decorative; P., Pompon; S., Single

Andrea Ericson. (D.) Pure white. 75c. ea.; 3 for \$1.95.

Champoeg. (D.) Canary yellow, shaded salmon-pink. 50c. ea.; 3 for \$1.35.

Countess of Lonsdale. (C.) Blend of salmon-pink and amber. 25c. ea.; 3 for 65c.

Crimson Century. (S.) Rich, velvety crimson. 25c. ea.; 3 for 65c.

Esther R. Holmes. (C.) Mauve-pink; fine cut flower. 25c. ea.; 3 for 65c.

Jane Cowl. (D.) Orange buff and old gold, darker in center. 50c. ea.; 3 for \$1.35.

Jersey's Beauty. (D.) Fine, large rose-pink. 25c. ea.; 3 for 65c.

Jersey's Rose. (D.) Luminous Tyrian rose with red. 25c. ea.; 3 for 65c.

Klein Domitea. (P.) Bright, golden terra cotta. 25c. ea.; 3 for 65c.

Rudy Vallee. (C.) Reddish apricot and gold. 75c. ea.; 3 for \$1.95.

Snow Clad. (P.) Pure white. 25c. ea.; 3 for 65c. (Sent postpaid at above prices.)

CANNAS

Cannas are unexcelled for their gorgeous display of color lasting from planting time until frost. Planted in group masses they make a brilliant show. Water liberally throughout the Summer.

Strong, started plants, out of 4 in. pots. These are superior to dormant divisions

Apricot (3 ft.) Rich apricot shade, gold and coral center. \$2.00 per doz.

King Humbert. (4 ft.) Best bronze-leaved variety. Flowers orange-scarlet, flecked with carmine. \$2.00 per doz.

Mrs. Alfred F. Conard. (4 ft.) Silvered peach-pink. \$2.00 per doz.

Richard Wallace. (4 ft.) Canary yellow. \$2.00 per doz.

The President. (5 ft.) Rich, glowing scarlet flowers of immense size. \$2.00 per doz.

CALADIUM (Elephant's Ear)

Immense light green leaves producing tropical effect. Large bulbs, 30c. each, postpaid. 3 for 75c.

TUBEROSE

Long spikes of white, waxy, delightfully fragrant flowers on a stem 2 to 3 ft. high. Strong fresh bulbs, 10c. each; 3 for 25c.; 60c. per doz., postpaid.

Barr's Annuals for Quick Results

These are easily grown, give quick results and include some of the most showy garden flowers. They offer great variety of colors, form and foliage. Frequently used to fill bare spots in the Hardy Border and to supplement the Rock Garden. Most of the bedding types will furnish an abundance of cut flowers for the house.

(Ready to plant out about May 10).

Varieties marked (b) are especially adapted to bedding purposes; (e) for edging; (p) for porch boxes; (r) for rock gardens; (v) vines.

Achyranthes. (b) (e) Red leaved variety. 2½ in. pots, \$1.00 per doz.; \$7.50 per 100.

Ageratum. (b) (e) (p) (r) Bright blue. 3 in. pots, \$1.00 per doz.; \$7.50 per 100.

Alternanthera. (e) Dainty foliage; yellow touched green, or red and green. 2½ in. pots, \$1.00 per doz.; \$7.50 per 100.

Alyssum, Sweet. (e) (p) (r) Dainty, white flowers, 2½ in. pots, \$1.00 per doz.; \$7.50 per 100.

Antirrhinum (Snapdragons). (b) Pink, copper, white, yellow. 3 in. pots, \$1.00 per doz.; \$7.50 per 100.

Asters. (b) White, rose, purple; early or late. Disease-resistant type. 30c. per doz.; \$2.00 per 100.

Begonias. (b) (p) Pink or deep rose. 2½ in. pots, 15c. each; \$1.50 per doz.

Calendula, Orange King. (Pot Marigold) (b) 30c. per doz.; \$2.00 per 100.

Coleus. (b) (e) (p) Separate or mixed colors, 2½ in. pots. \$1.00 per doz.; \$6.50 per 100.

Cosmos. (b) Lavender, white and pink mixed; early. 30c. per doz.; \$2.00 per 100.

Fuchsias (p) For shady spots. 4-inch pots, 25c. each; 3 for 60c.; \$2.50 per doz.

GERANIUMS (b) (p)

Poitevine. Salmon pink.

Radio Red. Dark red.

Ricard. Bright red.

3 in. pots, 15c. ea.; \$1.50 per doz.; \$10.00 per 100.

4 in. pots, 25c. ea.; 3 for 60c.; \$2.00 per doz.

Heliotrope (b) (r) Small, fragrant, blue flowers in clusters. 4-inch pots, 25c. each; \$2.00 per doz.

Ivy, German. (p) (v) (r) Fast-growing; good for baskets. 2½-inch pots, 10c. each; \$1.00 per doz.

Lantana. (e) (p) (r) Rose, red or lavender. 3 in. pots, 15c. each; \$1.50 per doz.; 4 in. pots, 25c. each; \$2.00 per doz.

Lantana, Trailing. (p) (v) (r) 2½-inch pots, 15c. each; \$1.50 per doz.

Lobelia, Trailing. (p) (v) (r) 2½ in. pots, 10c. each; \$1.00 per doz.

Marigold. *Dixie Sunshine.* (e) Large, orange flowers. 30c. per doz.

Marigold. *Guinea Gold.* (e) Large double flowers in golden yellow. 30c. per doz.

Marigold. (e) *Liliput.* Dwarf, double; yellow and bronze. Transplants, 30c. per doz.; \$2.00 per 100.

Moonflower Vine (Ipomoea) (v) Pure white or blue; state color. 4-inch pots, 25c. each; \$2.00 per doz.

Pansies, Mixed. (b) (e) (r) 50c. per doz.; \$3.00 per 100.



Geraniums, Petunias, Ageratum, Sweet Alyssum, Vincas, etc., will make up an attractive Window-Box; English Ivies, listed under Vines, also are good.

PETUNIAS (b) (p) (r)

Diener's Ruffled Monsters. Flowers ruffled and fringed; wide range of colors.

Celestial Rose. Cheerful rose pink; dwarf.

Elk's Pride. Large flowers; deep royal purple.

Snowball. Dwarf, white.

Rosy Morn. Brilliant rose colored flowers, white throat; dwarf.

3 in. pots, \$1.25 per doz.; \$8.00 per 100.

Transplants from flats, 60c. per doz.; \$4.00 per 100.

Salvia. (*Scarlet Sage*). (b) 3 in. pots, \$1.00 per doz.; from flats, 60c. per doz.

Thunbergia (Black-Eyed Susan). (p) (r) (v) Rapid growing; trumpet shaped flowers in various colors and markings. 3 in. pots, 10c. ea.; \$1.00 per doz.

Tradescantia (Wandering Jew). (p) Green or variegated-leaved vines. 3 in. pots, 10c. each; \$1.00 per doz.

Scabiosa. (*Morning Bride*). (b) Blue, pink or red. From flats, 30c. per doz.; \$2.00 per 100.

Stock, Ten Weeks'. (*Gilliflower*). (b) 4-inch pots, 25c. ea.; \$2.00 per doz.

Verbenas. (e) (p) *Cerise Beauty of Oxford* or *Pink Beauty of Oxford.* 3 in. pots, \$1.00 per doz.; \$7.50 per 100; 4 in. pots, \$2.00 per doz.; \$12.00 per 100.

Vinea, Variegated. (p) (r) For vases or for trailing over edge of window boxes. 3 in. pots, 10c. each; \$1.00 per doz.; 4 in. pots, 20c. each; \$2.00 per doz.

Zinnias. (b) Scarlet, apricot or rose. From flats, 30c. per doz.; \$2.00 per 100.

Barr's "Will Grow" Annuals are Well Established, Vigorous Plants.

Barr's Heavy Yielding Fruit Trees

The trees listed here are the best in their respective varieties. They are the largest sizes that can be planted to best advantage, are straight trunked, true to name, and by reason of their unusual vigor will transplant successfully, make good growth, and give an early and abundant yield. Plant cherry tree tap-root straight down.

Heavy, No. 1 grade, selected trees; note large caliper (trunk diameter) of trees supplied.



Basket of Champion Peaches

STANDARD APPLE

- Baldwin.** Large, bright red, rich, juicy. Winter.
 - Delicious.** Large, unevenly shaped. Winter.
 - Early Harvest.** Small. Straw color. Acid. Early.
 - Grimes' Golden Pippin.** Medium. Sub-acid. Winter.
 - Jonathan.** Brilliant red; highly flavored, crisp and tender. Winter.
 - McIntosh.** Medium to large, deep red. Winter.
 - Rambo.** Large, yellow; rich and of good flavor. Early.
 - Red Astrachan.** Large, crimson. Juicy, acid. Early.
 - Rome Beauty.** Large, round, juicy; mottled and striped different shades of red. Good baking apple. Winter.
 - Smokehouse.** Medium, red striped. Sub-acid. Winter.
 - Stayman's Winesap.** Medium, bright red. Winter.
 - Wealthy.** Red of good quality and good keeper. Acid. Autumn.
 - Yellow Transparent.** Pale yellow. Sub-acid. Early.
 - York Imperial.** Medium, white, shaded red. Sub-acid. Winter.
- 2 yr., 5 to 6 ft., $\frac{3}{4}$ -1 in. cal. 95c. ea.; \$9.00 per 10; \$75.00 per 100 of your selection.

CRAB-APPLE

- Transcendent.** Medium, golden yellow, crimson cheek. September. Strong, stocky trees. 2 yr., $\frac{3}{4}$ -1 in. cal. 95c. ea.; \$9.00 per 10.

APRICOT

- Moorpark.** Large, deep orange. Rich. August. 1 yr., 4-5 ft., $\frac{3}{4}$ -1 in. cal., 90c. ea.; \$8.00 per 10 of your selection.

SOUR CHERRY

- Early Richmond.** Medium, deep red, rich, acid. Middle of June.
 - English Morello.** Large deep red, pleasant, acid. Last of July.
 - Montmorency.** Large; bright red; pleasing acid flavor. June.
- 2 yr., 3 to 5 ft., $\frac{3}{4}$ -1 in. cal., Mazzard roots, 85c. ea.; \$7.50 per 10 of your selection.

SWEET CHERRY

- Black Tartarian.** Very large, purplish-black, rich. June.
 - Governor Wood.** Large; yellow, shaded red. June.
 - Napoleon Bigarreau.** Large, yellow and red, excellent. July.
 - Rockport.** Large, red, pleasant and rich. June.
 - Schmidt's Bigarreau.** Large, red, rich and pleasant. July.
 - Windsor (Oxheart).** Large, liver-color, rich. July.
 - Yellow Spanish.** Very large, yellow, red cheek, sweet. Last of June.
- 2 yr., 5 to 6 ft., $\frac{3}{4}$ -1 in. cal., Mazzard roots, \$1.00 ea.; \$9.00 per 10 of your selection.

PLUM

(European Varieties)

- German Prune.** Large, purple, sweet. September.
- Reine Claude.** Large, green gage, excellent. Late September.
- Yellow Egg.** Large, oval, yellow, juicy. September. 2 yr., 5 to 6 ft., $\frac{3}{4}$ -1 in. cal., 95c. ea.; \$9.00 per 10 of your selection.

(Japanese Varieties)

- Burbank.** Large, cherry-red, sweet. Last of August. 2 yr., 5 to 6 ft., $\frac{3}{4}$ -1 in. cal., 95c. ea.; \$9.00 per 10.

PEACH

- Champion.** Very large, white, red cheek, delicious. Late September.
- Crawford's Early.** Medium, yellow. July.
- Crawford's Late.** Very large, yellow, red cheek. Late September.
- Elberta.** Very large, yellow, red cheek, juicy, rich. Middle of August.
- Iron Mountain.** Large, pure white, solid, juicy. October.
- J. H. Hale.** Very large, yellow. Late August.
- Mountain Rose.** Medium, white, red cheek, sweet. First of August.
- Stump the World.** Very large, creamy white, red cheek, delicious. September.
- Yellow St. John.** Large, yellow, sweet. July. 1 yr., 4 to 5 ft., $\frac{5}{8}$ - $\frac{7}{8}$ in. cal., 55c. ea.; \$5.00 per 10; \$45.00 per 100 of your selection.

PEAR

- Bartlett.** Large, clear yellow, highly aromatic. Autumn.
- Duchess d'Agnouleme.** Large, greenish yellow, juicy. Autumn.
- Kieffer.** Large, golden yellow, sweet. Winter.
- Seckel.** Small, yellowish russet, spicy flavor. Autumn. 2 yr., 5 to 6 ft., $\frac{3}{4}$ -1 in. cal., \$1.00 ea.; \$9.00 per 10 of your selection.

QUINCE

- Champion.** Prolific, constant bearer; fruit larger and more oval than the Orange variety. Late.
- Orange.** Large and prolific; orange-yellow; delightfully fragrant. Early. 1 yr., 4 to 5 ft., $\frac{5}{8}$ - $\frac{7}{8}$ in. cal., \$1.00 ea.; \$9.00 per 10 of your selection.

"Will Grow" Fruit Trees Are Too Large For Parcel Post. Not Less Than 5 at 10 Rates

Small Fruits to Plant in the Garden

ASPARAGUS

Palmetto or Mary Washington. 2 yr. Select No. 1 roots, \$2.00 per 100; \$12.00 per 1000.

BLACKBERRY

Blowers. A hardy and productive variety. Fruit large, black and sweet. Good strong canes, 20c. ea.; 65c. per 10; \$4.50 per 100.

CURRANT

Perfection. A large red variety. 2-yr. strong healthy plants, 30c. each; 3 for 75c.; \$2.00 per 10.

GOOSEBERRY

Downing. Light green.

Houghton. Pale red.

Strong 2 yr. plants, 25c. each; \$2.00 per 10.

GRAPE VINES

Black

Campbell's Early. One of the largest fruiting Grapes and extremely satisfactory.

Concord. The well-known black Grape. Can always be depended on to fruit heavily. 25c. ea.; \$1.50 per 10; \$10.00 per 100.

Worden. Bunch large and compact. Good large berries and an early fruiting variety.

Red and Purple

Catawba. A very nice berry, having an unusually sweet and aromatic flesh.

Delaware. The well-known small, very sweet red Grape. Comes in small bunches. 35c. each; \$2.75 per 10.

Salem. Berries larger than Catawba, flesh tender, juicy and sweet.

White

Niagara. Sweet and juicy, large, round berries; long, compact, heavy bunches; best white.

Selected, strong 2 yr. Grape Vines, except where noted, 30c. ea.; \$2.25 per 10; \$15.00 per 100 of your selection.

RASPBERRY

Columbian. Excellent flavored fruit of large size A good purple variety. 25c. ea.; \$1.00 per 10; \$7.00 per 100.

Cumberland. A well-known black-cap. Fruit large and good.

Cuthbert. Hardy, sweet and productive. Deep crimson.

Latham. Large, round, brilliant red; heavy yielding Mosaic free and hardy.

Transplanted strong, 2 yr. plants, except as noted, 20c. ea.; 75c. per 10; \$5.50 per 100 your selection.

RHUBARB

Strong 2 yr. roots, 3 for 50c.; \$1.25 per 10.

STRAWBERRIES

The Strawberry will grow in any good garden soil. Plant 1 foot apart in the row, the rows 3 to 4 feet apart.

Big Joe (Perfect). Vigorous grower and very productive. Berries large, conical shape, rich red, excellent flavor. Best mid-season variety.

Chesapeake (Perfect). Large, firm berries of delicious flavor. Glossy, rich color. Best late variety.

Premier (Perfect). Glossy, rich red color extending clear through. Deliciously flavored. Immensely productive. Best very early.

Senator Dunlap (Perfect). Fruit bright red, glossy and attractive. Standard, medium early.

William Belt (Perfect). Firm, deep crimson, large, irregularly shaped berries of good taste. Late.

Strong, layer plants, 25c. per 10 of one variety; \$1.00 per 100; \$5.50 per 1000 of your selection.

EVERBEARING STRAWBERRIES

Mastodon. Large fruiting and most prolific, bearing continuously June to frost; good flavor. 40c. per 10; \$1.50 per 100.



Dish of Wm. Belt Strawberries

What The Purchaser Thinks of Barr's Plants

A Pleasure To Deal With Barr's

Collingswood, N. J.
All our Shrubs, Trees, etc., are doing nicely and we are very proud of them. It is a pleasure to deal with a firm that is so fair. Our Paul's Scarlet Rambler is beautiful. It must have a thousand Roses.
Mrs. Arthur Wolfe.

Entire Village Beautified by Barr's

Baltimore, Md.
In carrying out the contract for the planting of the Operator's Village at Safe Harbor, Pennsylvania, you have supplied well trimmed and healthy stock and we particularly wish to comment on the care exercised in handling and planting this stock, leaving our grounds neat and trim in appearance

N. B. Higgins, Asst. Chief Engineer
Safe Harbor Water Power Corp.
Per Morris R. Baker

"Barr" Roses Superior To All Others

Campbelltown, Pa.
Received the Roses this morning and can say that they were the most wonderful bushes I received so far, and I bought about 90 bushes from different companies. Yours are far superior to all the rest.
C. G.

Finest of Plants, Says Minister

Jersey Shore, Pa.
Let me tell you that the Roses arrived promptly and in splendid shape. Your plants and your service are the finest.
Rev. M. W. Remaly

Finest Specimens in Entire Town

Bradford, Pa.
Our spruce trees are growing wonderfully well, and are more beautiful than I ever dreamed they would be. In fact, they are the finest specimen of spruce trees in the city, and we naturally are very proud of them.

Mrs. Hugh Grant

Eat and Enjoy Fruit Grown by Yourself in Your Own Garden.

Fertilizers, Insecticides, Fungicides, Etc.

Aluminum Sulphate. Useful in creating acid soil conditions. Broadcast 1 to 3 lb. to each square yard of surface. 5 lbs., 50c.; 10 lbs., 75c.; 25 lbs., \$1.50; 50 lbs., \$2.50; 100 lbs., \$4.00.

Aphitrogen. Kills aphids (plant lice), also refreshes and invigorates the foliage. Invisible, non-poisonous, will not turn foliage yellow. 2 oz., 50c.; ½ pt., \$1.25; 1 pt., \$2.25; 1 qt., \$3.50.

Arsenate of Lead (Powdered). To combat leaf-eating insects. Use 1 to 1½ lbs. to 50 gal. water. 1 lb., 30c.; 4 lbs., \$1.00; 10 lbs., \$2.25.

Bamboo Stakes. Dyed green.

	Doz.	100
36 inches, light	\$0.20	\$0.60
48 inches, light	.25	1.00
48 inches, heavy	.60	4.00
72 inches, heavy	.75	5.50

Bird Baths. Concrete, beautifully and substantially molded. Diameter of bowl 28 inches; pedestal 29½ inches; height over all 34 inches; weight 220 lbs. \$10.00 each.

Black Leaf 40. For aphids and all sucking insects. 1 oz., 35c.; 5 oz., \$1.00; 1 lb., \$2.25.

Bone Meal (Raw). Safe and effective; especially good on lawns. One pound will sow 10 sq. ft.; 1 lb., 15c.; 5 lbs., 40c.; 10 lbs., 60c.; 15 lbs., 85c.; 25 lbs., \$1.00; 50 lbs., \$1.75; 100 lbs., \$3.25.

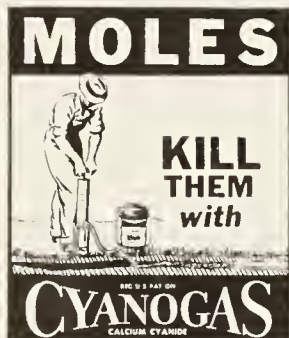
Bordeaux Mixture. For mildew, blight, black rot and other fungus diseases of fruits and plants. 1 lb., 30c.; 4 lbs., \$1.00; 10 lbs., \$2.25.



Borerkil Nicotine Paste is used by Tree Surgeons and Arborists the nation over! It's Safe, Convenient and Simple to use. When mixed with water, **Borerkil** becomes an effective Nicotine Spray. Indispensable as a dog repellent and poultry fumigant. Trial Size, 60c.

C. P. O. Liquid insecticidal soap spreader that increases the efficiency of contact spray solutions. Odorless; non-poisonous; does not discolor foliage. 3 oz., 25c.; 1 qt., \$1.00.

Cotton Seed Meal. An excellent organic fertilizer for such acid loving plants as Rhododendrons, Azaleas, Laurel, etc. Rich in ammonia and potash. 1 lb., 15c.; 5 lbs., 50c.; 10 lbs., 75c.; 25 lbs., \$1.25; 50 lbs., \$2.00; 100 lbs., \$3.50.



Cyanogas "A". Nothing is surer, quicker or more economical for mole control than Cyanogas. Also effective for snakes, rats and other rodents. 1 lb., 75c.; 5 lbs., \$3.00.

Dogzoff. Will keep dogs, cats or rabbits from any place where they are not wanted. Not poisonous to plants. Will not injure animals. 70c. postpaid.

Fish Oil Soap. Excellent remedy for scale and aphids. 1 lb., 30c.; 5 lbs., \$1.25, postage extra.

Flower Pots. Earthen. Cannot be sent by mail, but only by express or freight. Full inside measurement.

	Each	Doz.	100
4 inch	\$0.07	\$0.50	\$3.30
5 inch	.10	.75	5.75
6 inch	.12	1.20	
8 inch	.25	2.75	

Fungtrogen. Effective and scientific preventive and remedy for mildew, black spot and other fungus diseases of plants, especially Roses; equally valuable for rust of Phlox, Hollyhocks, Delphiniums, etc. Invisible on foliage or blooms. ½ pint, 75c.; 1 pint, \$1.25; 1 qt., \$2.00.

Insectrogen. Kills leaf-eating insects, also has definite value for black spot on roses. Adheres to foliage long time, killing insects present, those hatching later or coming from unsprayed plants. 4 oz., 60c.; ½ pint, \$1.00; 1 pint, \$1.75; 1 qt., \$2.75.

Japanese Beetle Traps. Most practical way to catch Japanese Beetles. Simple in operation; effective in action. Furnished with bait and strong hanger. 75c. each.

Leaf Mold. Nature's plant food. Mix with soil in which Rhododendrons and Azaleas are to be planted, 3 parts Leaf Mold to 1 part soil. 25 lbs., 50c.; 50 lbs., 90c.; 100 lbs., \$1.50; 500 lbs., \$5.00; 1 ton (2000 lbs.), \$15.00.

Lime, Hydrated. For lawn and field use where the ground has become sour. One pound is sufficient for 25 sq. ft. of surface. 10 lbs., 25c.; 50 lbs., 75c.; 100 lbs., \$1.25.

Marvel Spray. Sure specific for mealy bugs. Kills by penetrating the waxy coat of the insect. Stimulates plant growth; does not burn nor stain. 2 oz. bottle 50c. each.

Molgen. For effectively eliminating moles from lawns. Will not injure soil or grass. Odorless. Non-poisonous to humans or pets. ½ lb., 50c.; 1½ lb., \$1.25.

Paradichlorobenzene. Kills peach tree borers. Use 1 oz. to a tree. 1 lb., 50c.; 25 lbs., \$8.75; 50 lbs., \$16.00; 100 lbs., \$29.00.

Peat Moss (Granulated). Applied as mulch conserves moisture, keeps down weeds, enriches soil and beautifies at same time. 1 bale covers 125 sq. ft. to depth of 2 inches. 1 bale, \$3.00; 5 bales, \$13.50; 10 bales, \$25.00.

Pyrox. (Bordeaux Calcium Arsenate Paste.) Combination of Bordeaux Mixture, Nicotine and Calcium Arsenate. To combat chewing insects, fungus growths, mildews, etc. Use 10 oz. to 2 gals. of water. 10 oz. jars, 50c.; 40 oz. can, \$1.75.

Red Arrow. Fatal to both chewing and sucking insects. 1 oz. (makes 4 to 8 gal. of spray), 35c.; ¼ pt., \$1.00; 1 pt., \$2.50.



Please include postage for parcel post shipment. For rates, see page 6

Fertilizers, Insecticides, Fungicides, Etc.

Rhodo-Azalea Food. (G & O). This brand has been responsible for many beautiful prize specimens. Acid where acid is needed. Broadcast 3 lbs. per 100 sq. ft. 10 lbs., \$1.25; 25 lbs., \$2.50; 100 lbs., \$8.75.

Rhododendron Food. (Barr's.) Not only acidifies the soil but provides plant food especially needed by Rhododendrons, azaleas and other broad-leaved evergreen shrubs. Broadcast $\frac{1}{4}$ lb. to each square yard 2 or 3 times a year. 1 lb., 15c.; 5 lbs., 60c.; 10 lbs., \$1.00; 25 lbs., \$2.00.

Sheep Manure, Pulverized. A pure natural manure, for lawns, potting soil, general vegetable and flower gardens, where quick results are wanted. 5 lbs., 40c.; 10 lbs., 65c.; 25 lbs., \$1.00; 50 lbs., \$1.75; 100 lbs., \$3.00; 500 lbs., \$14.00; 1000 lbs., \$26.50; 1 ton, \$50.00.



Snarol. Quickly kills Snails, Cutworms, Slugs, Grasshoppers, Sowbugs, Earwigs, etc. A ready prepared meal for the pests, to be broadcast on the ground under the vegetation. $1\frac{1}{2}$ lbs., 35c.; 4 lbs., 85c.

Soil, Potting. Mixture of soil, sand and fertilizer. Ideal for potting purposes, or any place where especially good soil is needed. $\frac{1}{2}$ bu., 45c.; 1 bu., 75c.; 2 bu., \$1.35.

Sprayers. All brass, continuous high pressure, reinforced full quart sprayer. Combination nozzle. Built like a fire extinguisher. Tested for 65 lb. pressure; leak proof. \$1.75 each. Also heavy tin sprayers of 1 qt. capacity at 50c ea.

Stakes. Strong locust stakes making excellent supports for plants requiring this treatment. 4 ft., 15c. ea.; 8 ft., 25c. ea.



Stim-U-Plant. All-the-year fertilizer in tablet form for all kinds of plants; odorless; quick-acting. 30 for 25c.; 100 for 75c.; 1000 for \$3.50, postpaid.

Sulphur. Useful for dusting roses affected with mildew or black spot. 1 lb., 15c.; 5 lbs., 50c.; 10 lbs., 85c.

Sunoco. Most effective spray for scale insects. 1 gal. makes 30 to 75 gal. of spray. 1 gal. \$1.25; 5 gal., \$5.00; 50 gal. drum, \$20.00.

T A T Ant Bait. Just squeeze bait on top of ant hill. Enables you to treat all colonies at once. Each tube sufficient for several hundred small size hills. 35c. ea.



T A T Ant Trap. Recommended for the home due to exclusive safety feature. Destroys both sweet and grease eating ants. 25c. ea.; 4 for 89c.

Tobacco Dust. Excellent dusting insecticide with fertilizing value; apply liberally to plants and on surface of soil as a mulch. 5 lbs., 25c.; 25 lbs., 75c.; 50 lbs., \$1.15; 100 lbs., \$2.00.

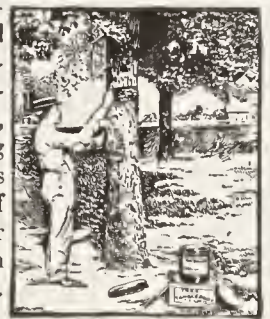
Tobacco Stems, Cut. A combined fertilizer, mulch and insecticide for lawns and shrubbery, trees and evergreens. Unlike stable manure does not introduce weed seeds. 100 lbs. will cover 250 sq. ft. thickly. \$1.25 per 100 lbs.; 500 lbs., \$5.00; \$18.00 per ton.

Tree Food. (Barr's.) Trees will make quick response to this special food and its action will also be long lasting. Especially valuable for Oak trees where leaves show tendency to turn yellow. Use 3 lbs. to each 1 in. caliper early spring, and again in July. 5 lbs., 50c.; 10 lbs., 75c.; 25 lbs., \$1.50; 50 lbs., \$2.50; 100 lbs., \$4.00.

Triogen. Complete all purpose Rose Garden Spray. Offers the first definite mildew and black spot control. Combining an insecticide it kills all insects, including the sucking and leaf-eating types. Remains on foliage, repelling subsequent attacks. Stimulates plant growth, resulting in fine foliage and luxuriant blooms.

Small Kit (Protects 12 to 20 roses a season).....\$1.50
 Medium Kit (Protects 50 to 75 roses a season)..... 4.00
 Large Kit (Protects 100 to 150 roses a season)..... 6.00
 Estate Kit (Protects 400 to 600 roses a season)..... 20.00

Tree Tanglefoot. Easily applied, effective, economical and non-injurious protection for fruit, shade and ornamental trees against ants, caterpillars and all crawling insects. One pound is sufficient for 12 to 15 ft. of band. Also useful for waterproofing wounds in trees. 1 lb. can, 60c.; 5 lb. can, \$2.75. Postage extra.



Vigoro. Special prepared plant food. Use 1 lb. to 20-25 sq. ft. area. 5 lbs., 50c.; 10 lbs., 75c.; 25 lbs., \$1.50; 50 lbs., \$2.50; 100 lbs., \$4.00.

Vita-Vim. A new, safe, high-test Plant Food for potted plants, lawns, trees, shrubs, flower and vegetable gardens. High in organic nitrogen, nature's most vital plant food element. One pound is sufficient for 35 sq. ft. 1 lb., 22c.; 2 lbs., 38c.; 5 lbs., 70c.; 25 lbs., \$2.50; 50 lbs., \$3.75; 100 lbs., \$5.50.

Wood-Ashes. Good lawn grasses will not succeed in sour soil. Wood ashes correct that. If bone meal has been sown in the land, do not use the Wood-ashes for three or four weeks. One pound will sow 10 sq. ft.. $1\frac{1}{2}$ to 2 tons to the acre. 25 lbs., \$1.00; 50 lbs., \$1.50; 100 lbs., \$2.75.

When small quantities of fertilizers are wanted by parcel post, please add postage as follows: 10c. for 3 lbs.; 15c. for 5 lbs.; 20c. for 10 lbs. Larger quantities will be sent by express or freight.

CUT FLOWERS AND GREENHOUSE PLANTS

(The name Barr and Flowers are Synonymous)

Unexcelled facilities combining a large range of greenhouses and a city floral shop have enabled Barr's to furnish a service by which we have become known throughout Lancaster city and county as "The Leading Florist of Lancaster." In confirmation of this is the fact that often letters simply addressed "Leading Florist, Lancaster, Pa." are delivered to Barr's.

Lancasterians when they think of flowers think of Barr's first.

We make a specialty of furnishing fresh Cut Flowers, Bridal and Bridesmaids Bouquets, Corsages for all occasions, Flower Decorations for weddings, parties or home beautification, Floral Emblems, Funeral Sprays and other tributes or gift arrangements. The Cut Flowers are grown in our own greenhouses and are furnished for all occasions fresh cut.

BARR'S SERVICE DEPENDABLE IN EVERY WAY

At Barr's you will always find—

A dependable source of high class flowers in adequate quantity and variety rightly priced;

The artistic skill that can bring out the full beauty of a floral arrangement, no matter how simple or how elaborate;

The "will to serve" in the real sense of the term.

Our extensive greenhouses, nurseries and garden shop located at 1000 - 1010 West Lincoln Highway on the immediate outskirts of Lancaster enable us to keep on hand only the best and freshest flowers and sturdiest foliage plants such as Ferns, Palms, Dracaenas, Pandani, Crotons, Sansevierias, Bedding Plants, etc. You are always most cordially welcome and will find here excellent parking facilities.

Our city flower shop at 116 N. Queen St., Lancaster, is completely equipped to supply any sort of floral need at short notice. You will find here interested, enthusiastic experts who keep in touch with all the newest flower and plant varieties—and with the constantly changing methods and styles that enable flower arrangement to keep up-to-date.

When you want to convey congratulations, good wishes or condolences, or in any other way to—

"Say it with Flowers"

you can safely and confidently leave to us the selection of appropriate varieties and combinations for any occasion, for Barr's guarantee only first class materials, workmanship and service. At the same time, those who wish to do their own selecting will be given every possible help.

OUT-OF-TOWN ORDERS GIVEN CAREFUL ATTENTION

As members of the Florists Telegraph Delivery Association, mail, phone or telegraph orders will be carefully filled at either our Greenhouses, 1000 West Lincoln Highway, or at our Flower Shop, 116 N. Queen St., Lancaster, Pa. Orders, too, entrusted to us for delivery in practically any part of the United States, Canada and Europe are sure to have proper attention by our fellow-members of this Association located at or nearest the place delivery is to be made. These florists give a bonded and guaranteed cooperation so you are assured of full value for the money spent.

INDEX (Continued From Page 50)

V	Page	Page	Page	Page	Page
Varnish Tree.....	21	Viola.....	43	Wavering-tree.....	30
Verbenas.....	45	Violet.....	43	Welsh.....	30
Veronica.....	43	Vita-Vim.....	49	WHEN TO PLANT.....	17
Viburnum.....	30	Vitex.....	30	Wild Indigo.....	35
Vigoro.....	49			Willow.....	24
Vinca.....	43 45	W		Wintercreeper.....	15, 31
Vines and Creepers....	31	Wake Robln.....	43	Wintershrubs.....	36
		Wandering Jew.....	45	Wisteria.....	31
				Withe-rod.....	30
				Witch-hazel.....	27
				Wood Ashes.....	49
				Y	
				Yarrow.....	35
				Yew.....	12
				Z	
				Youth and Old Age	45
				(Zinnias).....	45
				Yucca.....	16
				Zinnias.....	45

PRESS OF
GEORGE F. LASHER PRINTING CO.
PHILADELPHIA

Six Best Roses of World's Most Famous Hybridizers

From the best of the New Roses of America and Europe, Barr's have selected six outstanding varieties as the supreme achievement for 1936 of the World's most famous hybridizers. These are glorious triumphs and will bring a refreshing note to old gardens and a thrill to the beginner. Enjoy them in your own garden!



Better Times

Most Promising New Rose of Recent Years

The success of this patented Rose is indication of the name. The flowers are large, double, deliciously fragrant and a brilliant cerise-red. Produced on long, strong stems. Excellent for cutting. A very free, full bloomer. Buds are long and interesting. The foliage is good, too—a leathery, dark green.

\$1.50 each; \$15.00 per doz.



New Colors—New Fragrance—New Charm

Carillon. (Patented.) Destined to be one of the best loved roses of all times. Like the Carillon it rings with happiness. It is cheerful, yet restful, with its blossoms of soft, yet brilliant flame and coral tones. \$1.50 each; \$15.00 per doz.

Alezanc. (Patented.) A new comer from Spain. A rose of the most astonishing colors; reddish brown in the bud, gradually evolving to apricot. The first to bloom in the Spring. One of the finest roses ever to come from a country known for its romance and color. \$1.50 each; \$15.00 per doz.

Gloaming. (Patented.) The large, urn-shaped buds are carried on long stems, amply clothed with foliage. Ideal for cutting. Flowers of soft, satiny pink, with underlying shades of orange. Fragrant. Vigorous grower. \$1.50 each; \$15.00 per doz.

Matador. (Patent applied for.) Heralded as a great red rose when shown in Europe. Blossoms are large, full, with the scarlet crimson sheen of the matador's cape. Matador brings the fire and flash of the Toreador to your garden. Sturdy grower. \$1.50 each; \$15.00 per doz.

White Briarcliff. (Patented.) The first and only really pure white hybrid tea rose, with the finest form, since bride's roses have been grown. A supreme white rose. A vigorous bushy plant. Tremendous producer and ideal for cutting. \$1.50 each; \$15.00 per doz.

All Six Roses Only \$7.50

A \$9.00 Value

One each of the six Supreme Roses described on this page, regularly \$1.50 each, offered as a special collection for only \$7.50.

A Bargain In Rose Loveliness

Any 3 Roses listed on this page only \$4.00

B. F. BARR NURSERIES

Largest Nursery in Leading Agricultural County of America

1000-1010 West Lincoln Highway - - - Lancaster, Pennsylvania